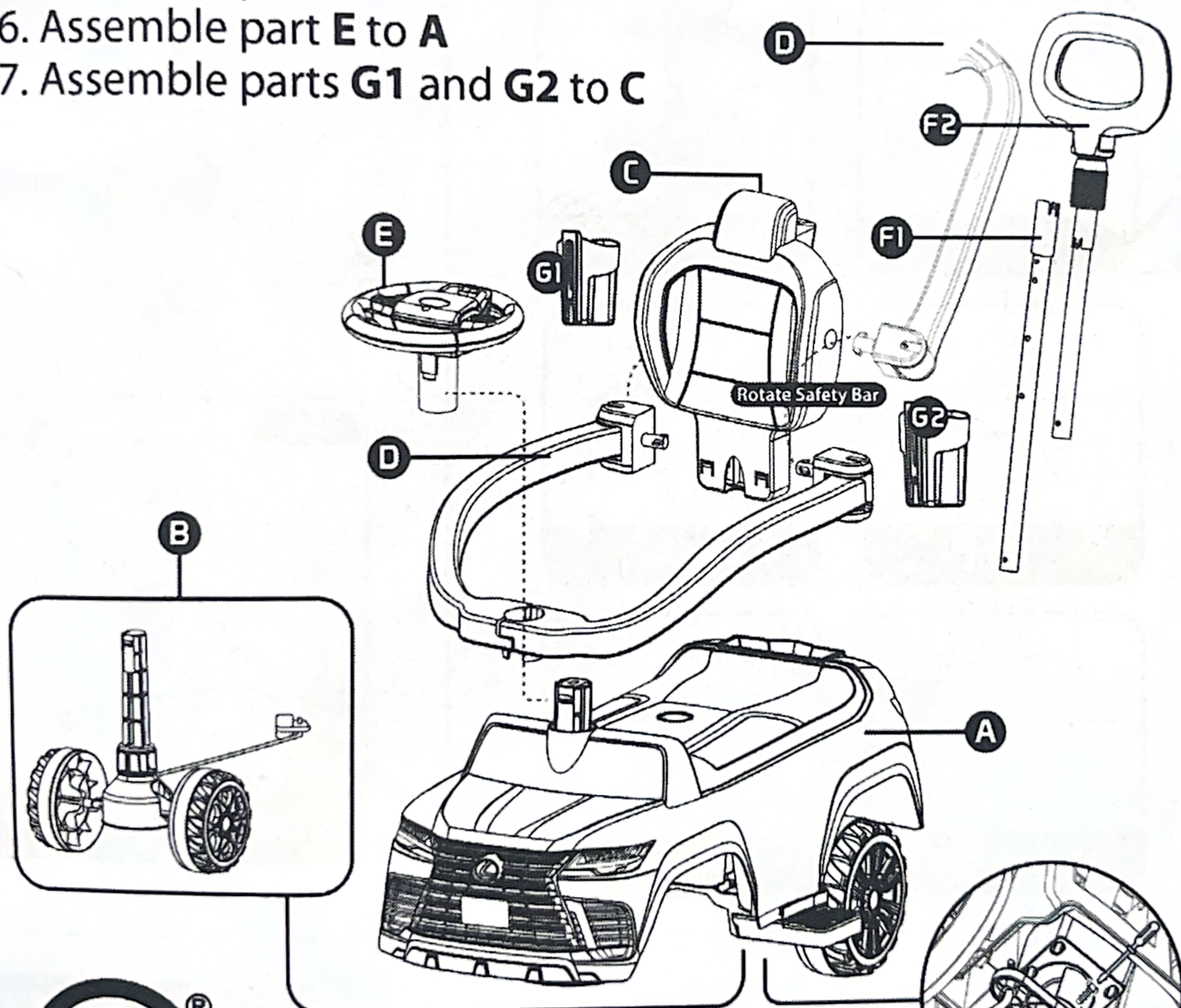


ASSEMBLY INSTRUCTIONS

SHP 895

1. Assemble part **B** to **A**
2. Assemble part **C** to **A**
3. Assemble part **F1** to **C** & then secure part **B** with bolts and nuts.
4. Assemble part **F2** to **F1**
5. Assemble part **D** to **C**
6. Assemble part **E** to **A**
7. Assemble parts **G1** and **G2** to **C**



Lock With Screw
After Assembly part F1 and F2 to C

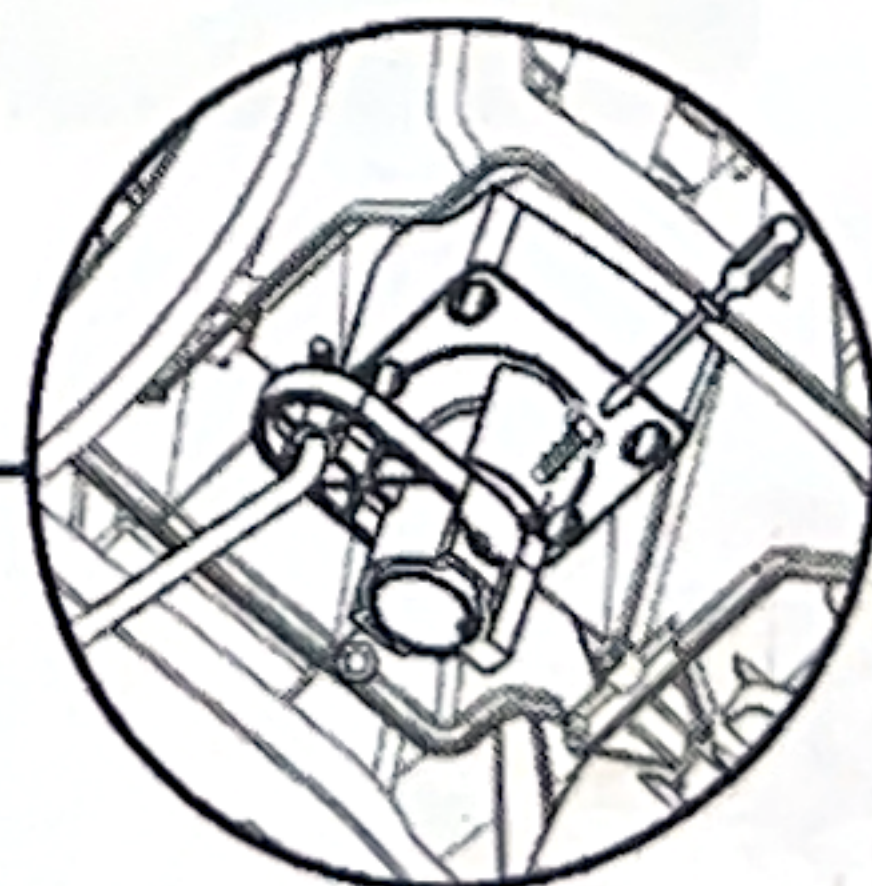


IMAGE AND PART NAME

SHP 895



Steering Wheel



Wheel



Body



Steering Sleeve



Rim



Backrest



Safety Bar

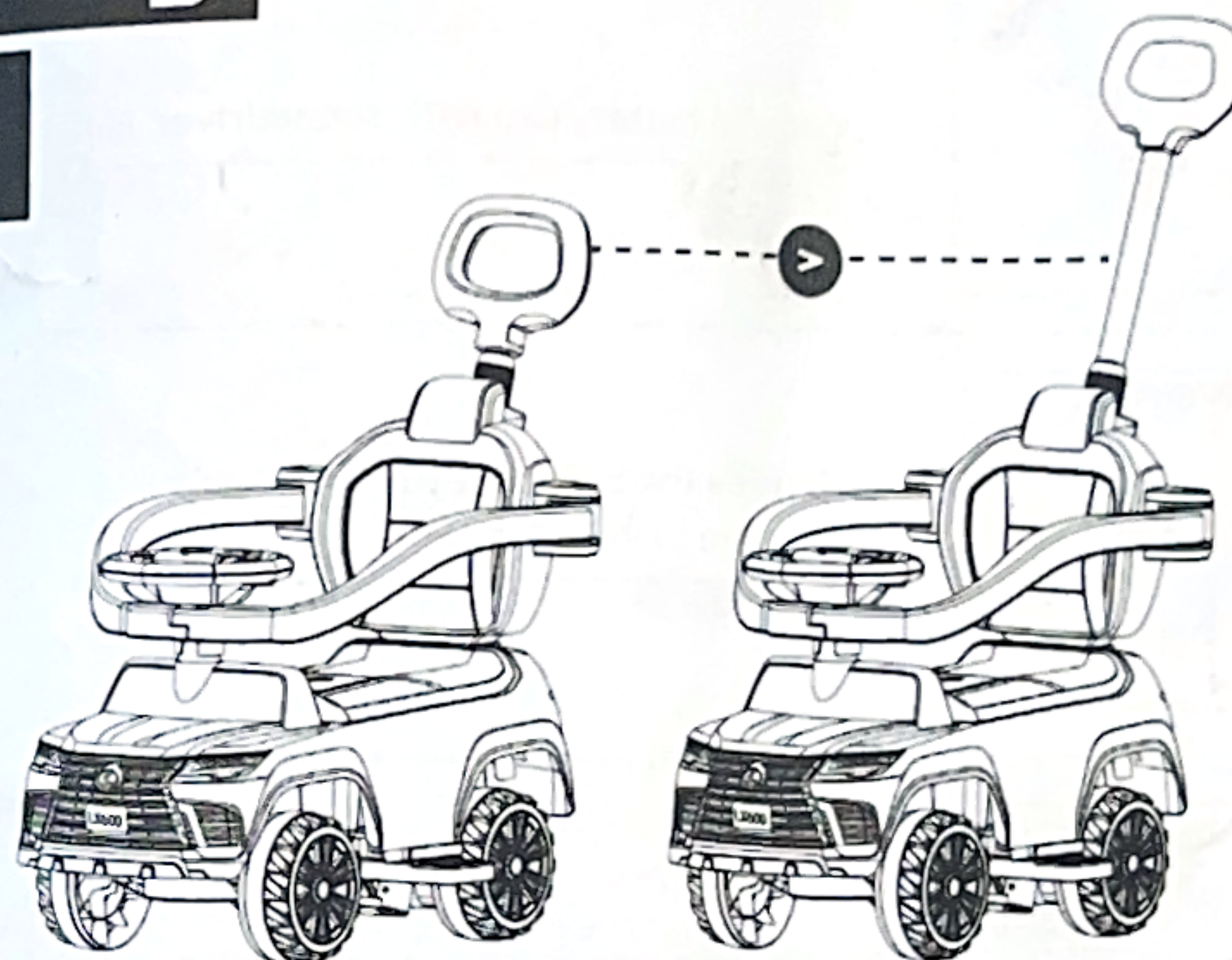


Handle

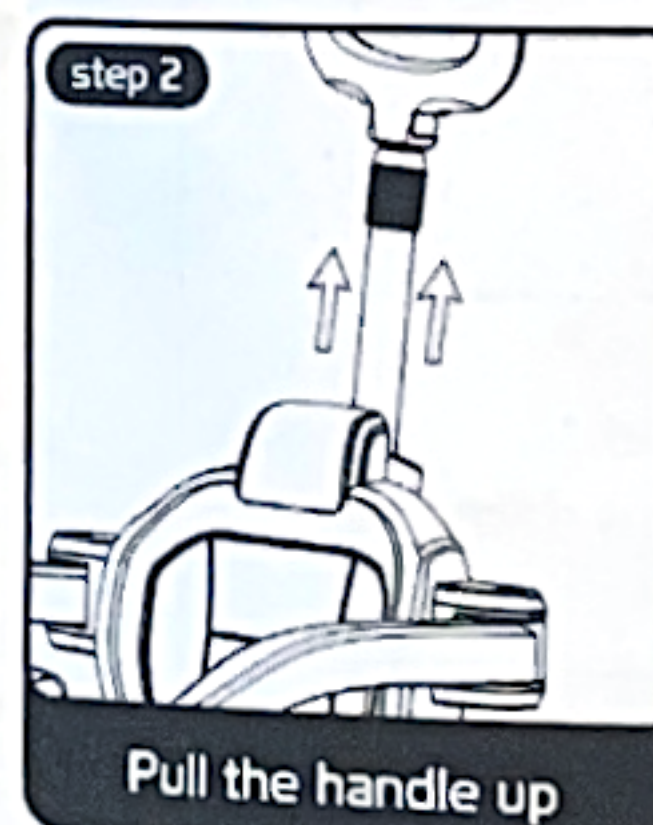
How To Setting

Handle Bar

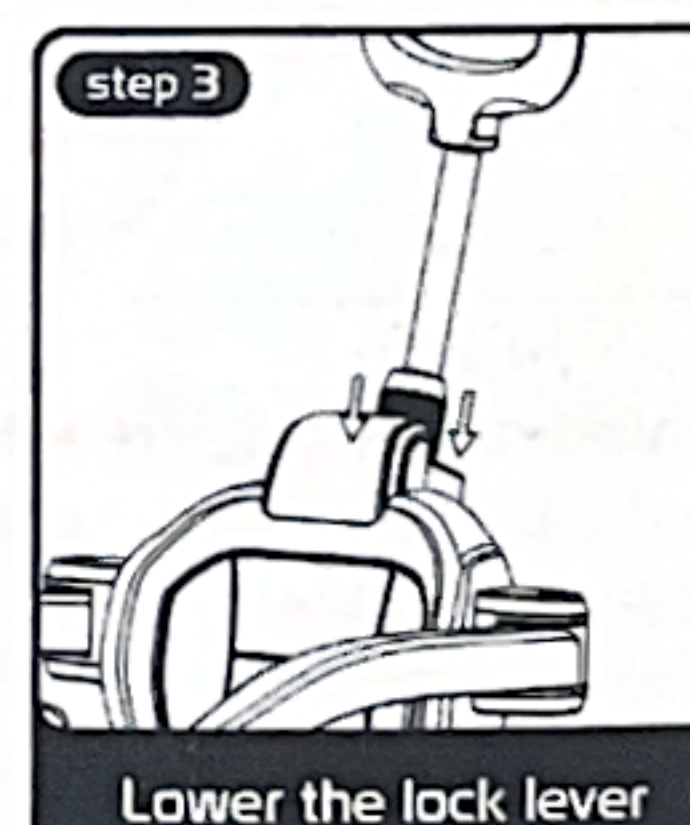
- SHP 895 -



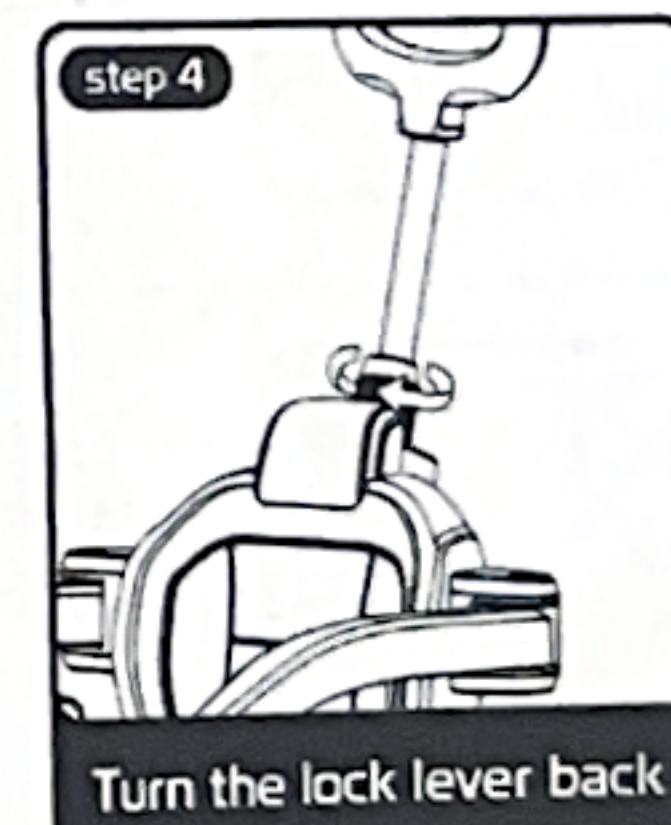
Turn the lock lever



Pull the handle up



Lower the lock lever



Turn the lock lever back



25090247

Produced by PT.Sinar Harapan Plastik
Imported by BABY FACTORY WAREHOUSE

Made in Indonesia
www.shptoys.com

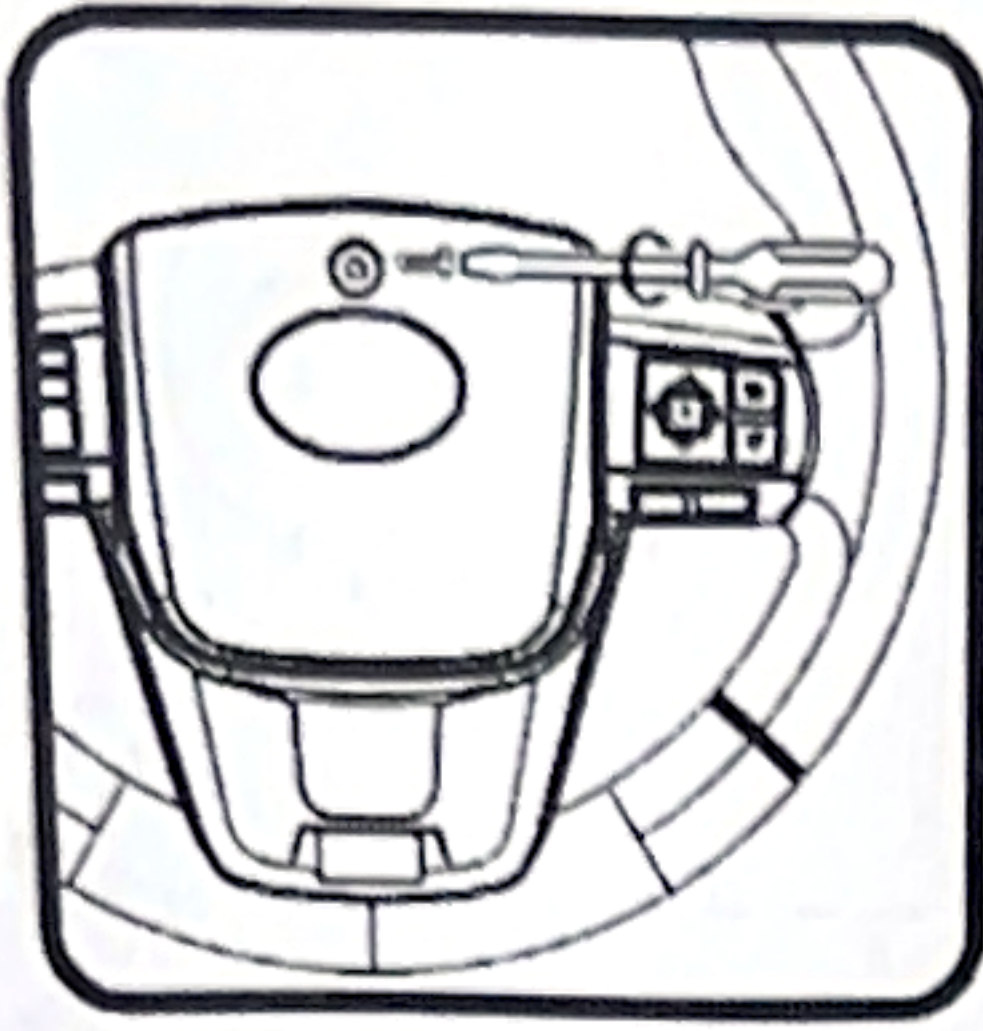
⚠ WARNING!

1. Maximum weight 25 kg.
2. Intended for 3+ years old.
3. Adult supervision is required.
4. Install the toy in accordance with the installation instructions, and check carefully the parts that have been installed.
5. Prohibited from playing on roads & dangerous places.

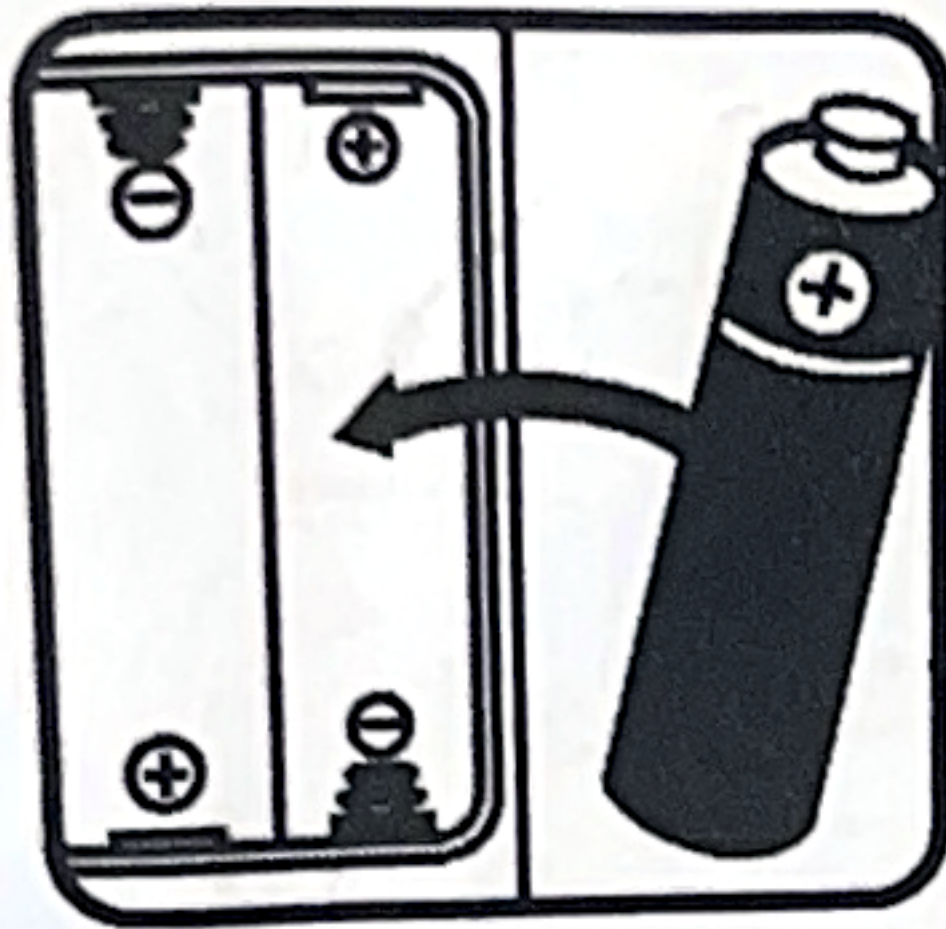


LET'S PROTECT OUR ENVIRONMENT!

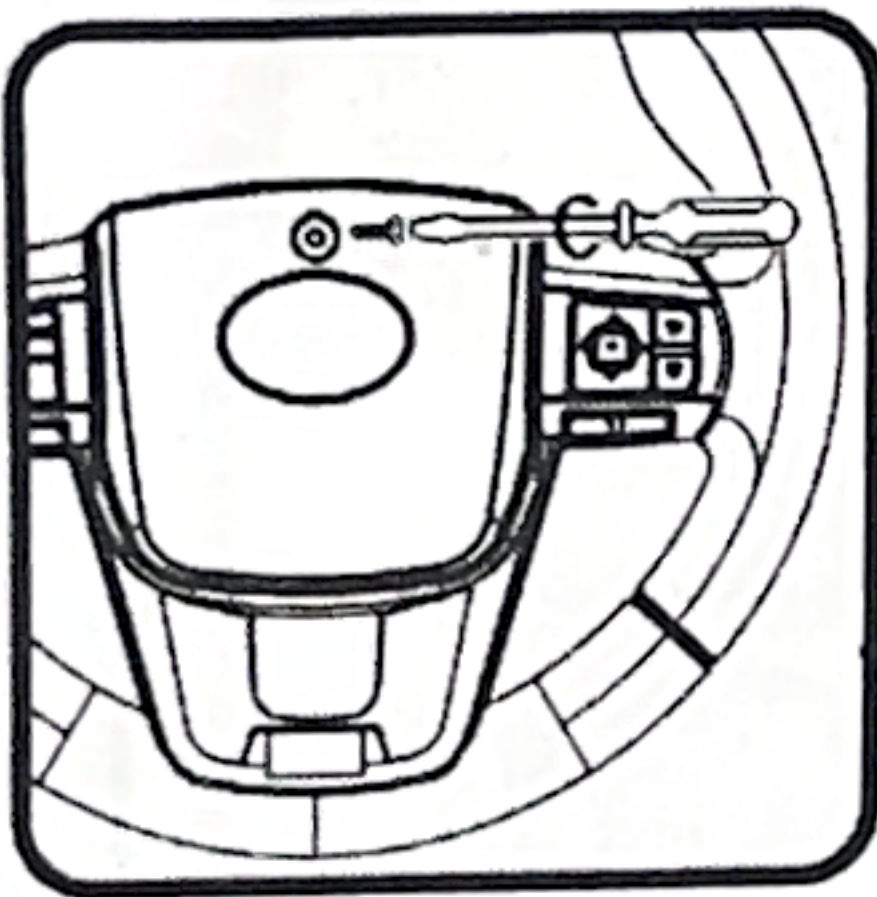
THE SYMBOL OF THE RECYCLING BIN INDICATES THAT THE PRODUCT SHOULD NOT BE DISPOSED OF WITH HOUSEHOLD WASTE. PLEASE USE THE DESIGNATED COLLECTION POINTS OR RECYCLING FACILITIES TO GET RID OF THE ITEM. DO NOT TREAT OLD BATTERIES LIKE HOUSEHOLD WASTE. TAKE THEM TO A DESIGNATED RECYCLING CENTER.



Open the battery cap with screwdriver (+).



Put inside the battery 2 pcs (AA) and make sure to install it correctly.



Ensure the battery cap is lock perfectly .



It is prohibited using a screwdriver to remove the battery, because it can damage the battery and plate.

