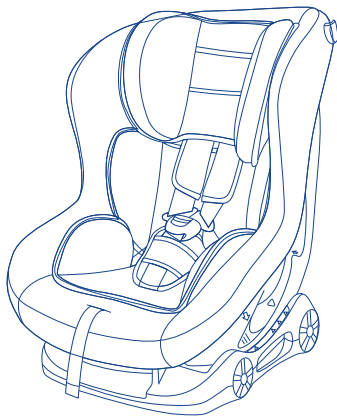




## INSTRUCTION MANUAL



EST-309  
Group 0+/1  
Birth to 18kg  
(Approximately Birth - 4 years)

ECE R 16 No 44.04

# EST-309 Car Seat

## NOTICE!

1. This is a “Universal” child restraint, it is approved to Regulation NO.44.04 series of amendments, for general use in vehicles and it will fit most, but not all, car seats.
2. A correct fit is likely if the vehicle manufacturer has declared in the vehicle handbook that the vehicle is capable of accepting a “Universal” child restraint for this age group.
3. This child restraint has been classified as “Universal”

# EST-309 Car Seat

## NOTICE!

under more stringent conditions than those which applied to earlier designs which do not carry this notice.

4. If in doubt, consult either the child restraint manufacturer or the retailer.

Only suitable if the vehicle is fitted with 3-point safety belts, Approved to UN/ECE Regulation No.16 or other equivalent standards.

# EST-309 Car Seat

## Feature

1. This product is called Restraining devices for child occupants of power-driven vehicles, commonly known as the child seat. Product appearance streamlined bionic design, elegant appearance. Precision injection molding process, high strength , compact structure, solid. Cloth sets of flame retardance fabric, wear-resistant, soft, antibacterial, and there are a variety of colors.
2. The backrest of this product can be adjusted to 4 different incline positions for the child to sit in during travel.

# EST-309 Car Seat

## Feature

- 3. This product comes with 3 positions for adjusting the height of the shoulder straps to meet the needs of your child.
- 4. This child seat can only be used for children 0-4 years old(approx), installed rearward-facing or forward-facing.



# SAFETY WARNINGS



# EST-309 Car Seat

For your child's safety, please read these instructions carefully before use and keep them for future reference. Failure to follow the instructions contained in this manual could result in serious injury to your child.

1. This child seat can only be used with the harness for children less than 18kg in weight (group 0+, less than 13kg ; group I, 9-18kg).
2. This child can be installed rearward-facing and forward-facing using a three-point lap and diagonal seat belt. Important - Do not use forward-facing before the child's weight exceeds 9kg.

# EST-309 Car Seat

3. This instruction manual can be retained in the allocated space on the child seat for its lifeperiod.
4. Do not use this child seat at home. It has not been designed for home use and should only be used in your car.
5. It is recommended that children are not left in their child restraint system unattended.
6. Do not place rear-facing child seat on front seat with airbag. Death or serious injury can occur.



# EST-309 Car Seat

7. The child seat should be changed when it has been subject to violent stresses in an accident.
8. For the reason of safety, the child seat must be fixed inside the vehicle even if you do not put your child inside the child seat.
9. Always make sure that any straps holding the seat restraint to the vehicle are secure. Any straps restraining the child should be adjusted to the child's body and check that the straps are not twisted.
10. Ensure that any lap straps is worn low down, so that the pelvis is firmly engaged.

# EST-309 Car Seat

11. Do not use any load bearing contact points other than those described in the instructions and marked in the child restraint.
12. Any luggage or other objects liable to cause injuries in the event of a collision should be properly secured.
13. The rigid items and plastic parts of a child restraint must be so located and installed that they are not liable during everyday use of the vehicle by becoming trapped by a moveable seat or in a door of the vehicle.
14. To prevent from the risk of fall, your child should always be fastened.

# EST-309 Car Seat

15. It is dangerous to make any alteration or additions to the device without the approval of the competent authority. It is dangerous to not closely follow the instructions provided by the child restraint manufacturer.

16. This child seat is designed for children from birth up to 18kg. Never overload the child seat with more than one child or with other loads.

17. The child restraint must not be used without the cover.

# EST-309 Car Seat

18. The seat cover should not be replaced with any other than the one recommended by the manufacturer as the cover constitutes an integral part of the restraint performance.

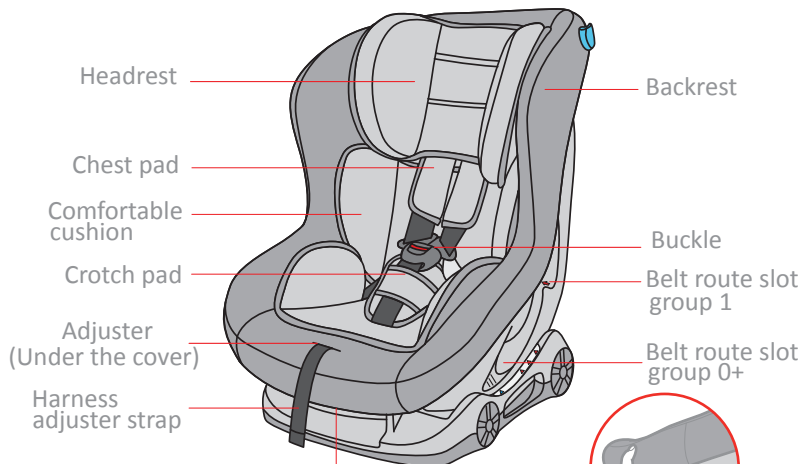
19. Before you adjust any movable or adjustable parts of your child seat you must remove your baby from the child seat.

20. The child seat should be kept away from sunlight if the seat is not provided with a textile, otherwise it may be too hot for the child's skin.

21. Never use a second-hand product as you can never be certain what was happened to it.

# EST-309 Car Seat

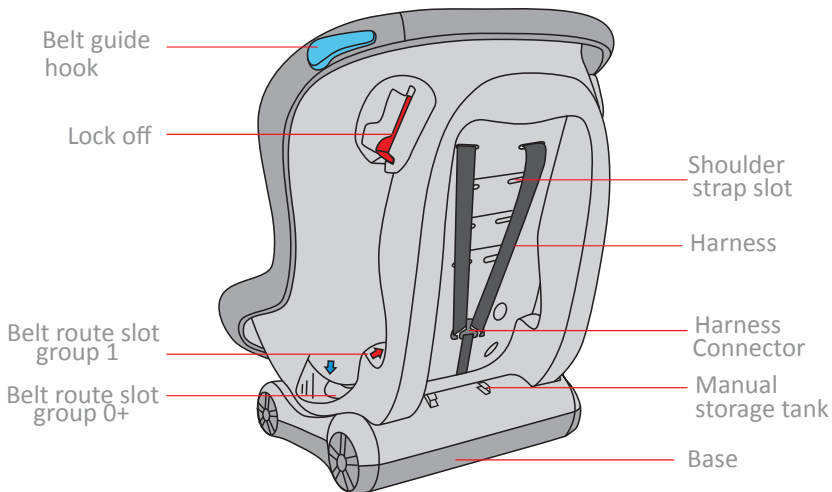
## PARTS



positioning handle

# EST-309 Car Seat

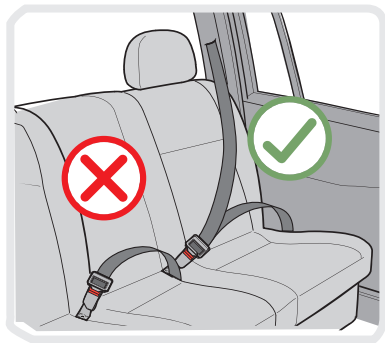
## PARTS



# EST-309 Car Seat

## Install position of the child seat in vehicle

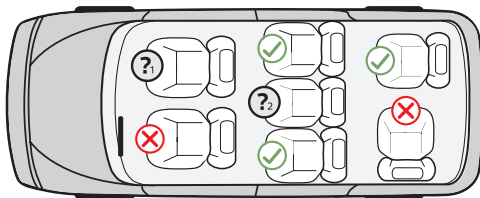
This child seat is suitable for conventional use on all cars equipped with 3 point seat belts that are fitted in accordance with European standard (ECE 44 or equivalent standard)



**Important:** The child seat must only be installed using a lap and diagonal seat belt.

# EST-309 Car Seat

Install position of the child seat in vehicle



- ✔ Corect fitting/suitable
- ✗ Incorrect fitting/not suitable
- ① Not to be used on this seat if a passenger front airbag is active
- ② Only use on this seat if a lap and diagonal seat belt is fitted.



# EST-309 Car Seat

## Checking the shoulder strap height

Always check that the shoulder straps are at the correct height for your child. The child's shoulders should always be thread through the slots in the cover and seat shell that are closest to the top of your child's shoulders.



NO-Too low



NO-Too high



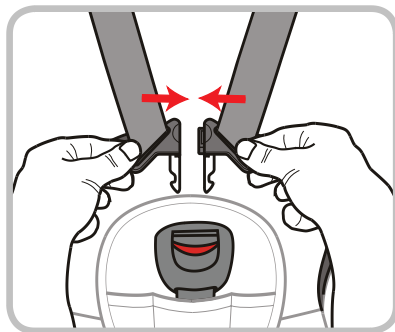
YES-Correct

# EST-309 Car Seat

## USAGE OF BUCKLE

Firstly, adjust the shoulder straps height, please proceed as follows:

Step 1. Put the two metal sections of the buckle connector together.

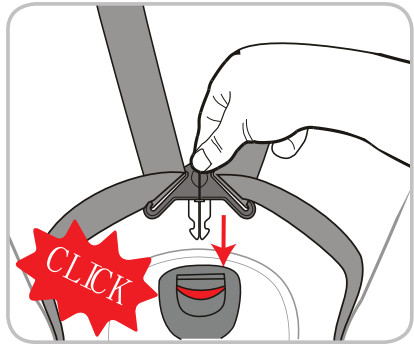


**Fig. 1**

# EST-309 Car Seat

## USAGE OF BUCKLE

Step 2. Slot the two buckle connectors into the slot in the buckle until they “click” place.



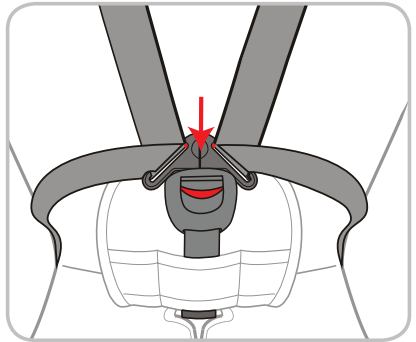
**Fig. 2**

# EST-309 Car Seat

## USAGE OF BUCKLE

Step 3. Check the harness is correctly locked by pulling the shoulder straps upward.

To release the harness, you can press the red button of the buckle downwards, the two metal sections will be pop up.



**Fig. 3**

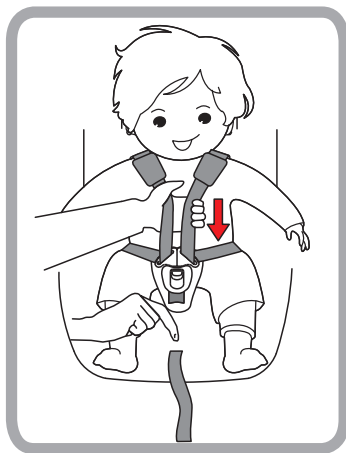
# EST-309 Car Seat

## ADJUST AND USE THE HARNESS

### Loosen the harness

The harness is slackened by pressing the adjuster (under the adjuster cover) on the front of the seat.

Press down the adjuster as you grip the two shoulder straps with your another hand. Pull the shoulder straps towards you to loosen the harness.



# EST-309 Car Seat

## ADJUST AND USE THE HARNESS

### Tighten the harness

Pull the shoulder straps upwards to remove the slack from the lap sections of the harness then pull the adjuster strap until the harness is fully tightened.

The harness should be adjusted as tightly as possible without causing discomfort to your child.

A loose harness can be dangerous.

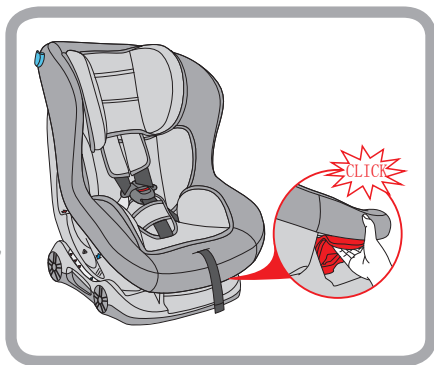
Check the harness adjuster and tighten each time the child is placed in the seat.



# EST-309 Car Seat

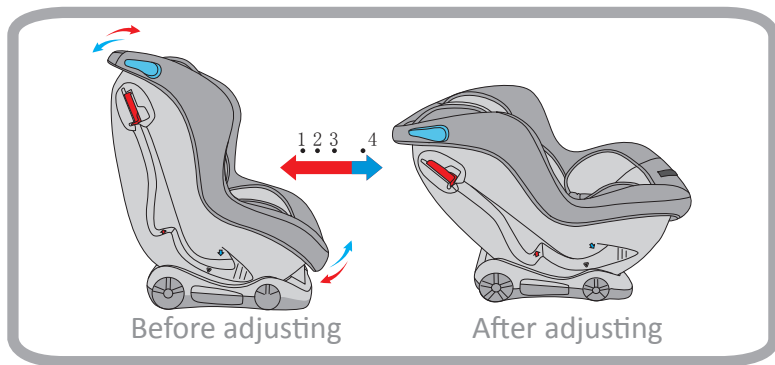
## Adjust the child seat to different incline positions

This child seat can be adjusted to 4 positions. If installed rearward-facing (group0+), only position 4 can be used. Pull the positioning handle under the front of the seat upward, and then pull or push the seat forwards or backwards. Release the positioning handle in the desired position and push until you hear a “click”.



# EST-309 Car Seat

Adjust the child seat to different incline positions



**Important:** Check to make sure the child seat is securely locked in the desired position by pulling the positioning handle.

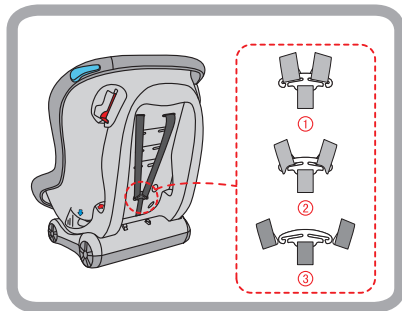


# EST-309 Car Seat

## Adjust the shoulder straps height

If the height of your shoulder belts in child car seat is not fit for your child, adjust the height of the shoulder belt, Please proceed as follows:

Step1. Loosen the shoulder harness, turn the child seat to the back. Side the chest straps and shoulder straps off the harness connectors.

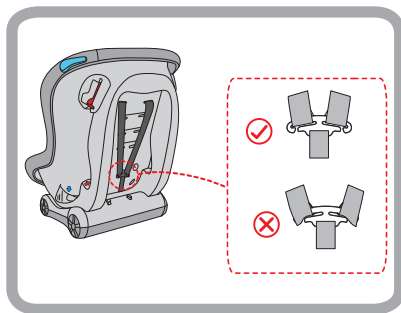


Step2. Pull the straps through the shoulder strap slots from the front of the child seat. Now you can remove the shoulder straps and chest pad.

# EST-309 Car Seat

## Adjust the shoulder straps height

Step 3. Then re-thread the shoulder straps and chest straps into the appropriate strap slots from the front of the child seat and slide them in the harness connectors.

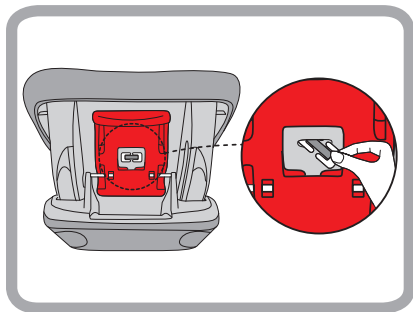


Important: Make sure that both of the shoulder belts and chest belt go through slots at the same height, and not twisted.

# EST-309 Car Seat

## Adjust the shoulder straps height

Adjust the child seat to position 4 and turn it to the bottom. Turn the harness locking clip on their narrowest end and thread it through the slot under the bottom of the child seat. The crotch pad and buckle as well as harness straps can now be removed.



# GROUP

## 0 +

# EST-309 Car Seat

**GROUP**

**0+**

Installation of the child seat

(Birth to 13kg)

This child seat can be used with the harness for children less 13kg in weight (group 0+), installed rearward facing using a three-point lap and diagonal seat belt.

# EST-309 Car Seat

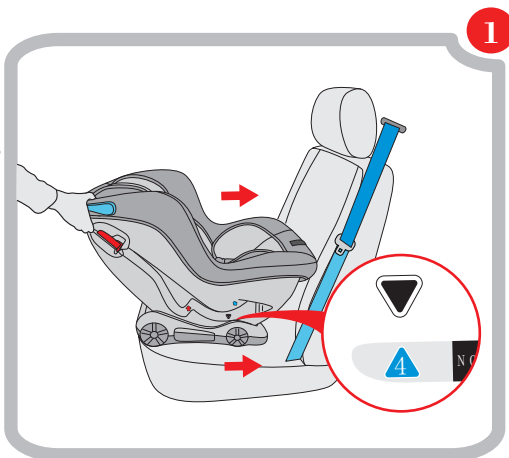
**GROUP**

**0+**

## Installation of the child seat

(Birth to 13kg)

Step 1. Adjust the child seat to position 4. place the child seat on the car seat rearward-facing and make sure that the front of the child seat is firmly pressed against the car seat backrest.



# EST-309 Car Seat

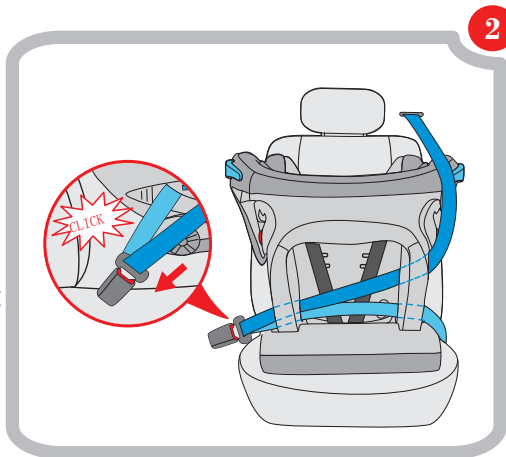
**GROUP**

**0+**

## Installation of the child seat

(Birth to 13kg)

Step 2. Pull out the diagonal belt together with lap belt, through the belt route slot of backrest and then insert into car seat belt buckle, hear “click”.



**C | S**  
— COZY N SAFE —

# EST-309 Car Seat

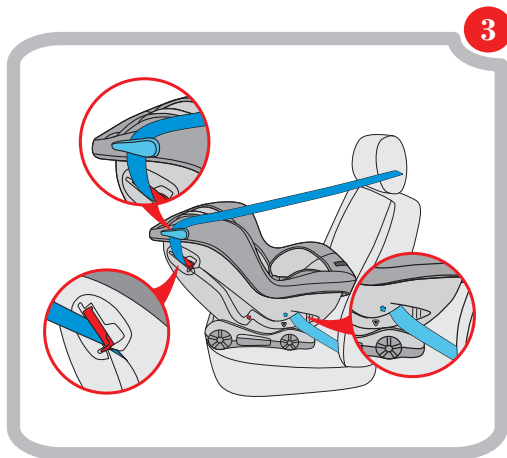
**GROUP**

**0+**

## Installation of the child seat

(Birth to 13kg)

Step 3. Clip the diagonal belt into the blue and red lock-off in same side. Thread the lap belt through belt route slot (group 0+).



**C | S**  
— COZY N SAFE —



# EST-309 Car Seat

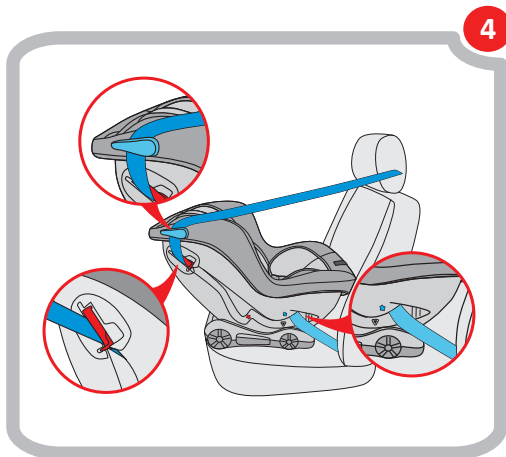
**GROUP**

**0+**

## Installation of the child seat

(Birth to 13kg)

Step 4. Thread the lap belt through belt route slot (group 0+) of other side.



**C | S**  
— COZY N SAFE —

# EST-309 Car Seat

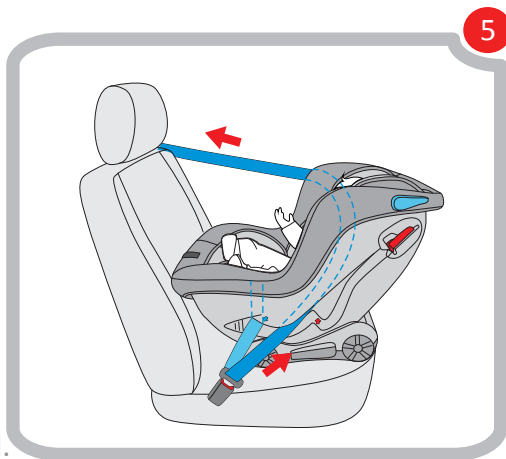
**GROUP**

**0+**

## Installation of the child seat

(Birth to 13kg)

Step 5. Pull car seat belt in the direction of red arrows and make sure the belt is tight and secure. Then put the child into the seat and fasten the harness. Check that the harness is not twisted.



**C | S**  
— COZY N SAFE —

# GROUP 1

# EST-309 Car Seat

**GROUP**

**1**

Installation of the child seat

(9kg to 18kg)

This child seat can be used with the harness for children 9kg to 18kg in weight(group 1), installed forward-facing using a three-point lap and diagonal seat belt.

# EST-309 Car Seat

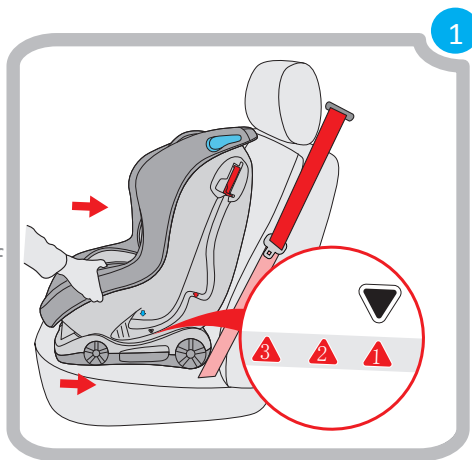
## GROUP

1

## Installation of the child seat

(9kg to 18kg)

Step 1. Adjust the child seat to position. Place the child seat on the car seat forward-facing and make sure the backrest of the seat is firmly pressed against the backrest of car seat.



# EST-309 Car Seat

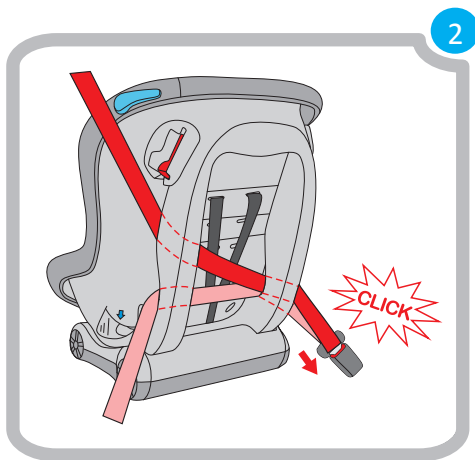
GROUP

1

## Installation of the child seat

(9kg to 18kg)

Step 2. Pull out the diagonal belt together with lap belt, pass through the belt route slot of backrest and then insert into car seat belt buckle, hear “click”.



# EST-309 Car Seat

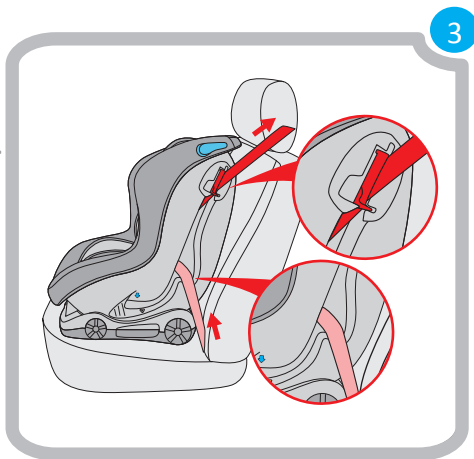
## GROUP

### 1

## Installation of the child seat

(9kg to 18kg)

Step 3. Clip the diagonal belt into the red lock-off. Thread the lap belt through belt route slot (group1).



# EST-309 Car Seat

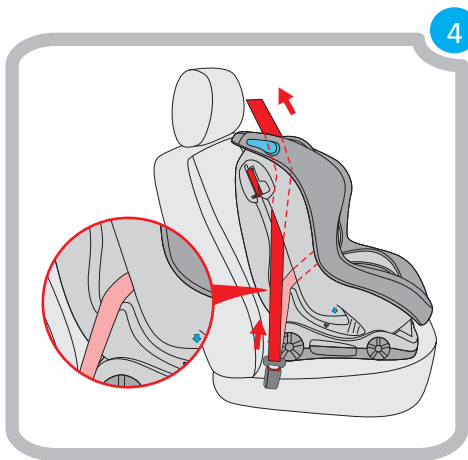
GROUP

1

## Installation of the child seat

(9kg to 18kg)

Step 4. Thread the lap belt through belt route slot(group1) of other side. Pull car seat belt in the direction of arrows and make sure the belt is tight and secure.





# EST-309 Car Seat

GROUP

1

## Installation of the child seat

(9kg to 18kg)

Step 5. Put the child into the seat and fasten the harness. Check that the harness does not twist.

**NOTICE:** Recline positions(1,2,3) is only suitable for forward-facing installation. It can be adjusted before or after installation.



# Maintenance and Cleaning

# EST-309 Car Seat

## Daily maintenance

1. Check the child seat periodically. The child seat should be replaced after an accident.
2. Please keep this child seat in a dry and ventilated place to avoid damp mold.
3. If the child seat becomes dusty, clean the seat belt and the plastic pieces by swiping them with a damp sponge and let it dry naturally.
4. If food or drink is dropped accidentally on the buckle, disassemble the seat belt from the child seat and rinse it

# EST-309 Car Seat

gently by warm water. Leave it to dry naturally.

5. For cleaning the entire child seat fabric cover, please refer to the washing instruction.

## Washing instruction

Never use any solvent, chemical detergent or lubricant on any part of your child seat.



Hand wash,  
water  
temperature  
below 30



Do not bleach



Dryclean, any  
solvent except  
trichloroethylene



Do not tumble  
dry



Do not iron



Euro Stock Traders Ltd

Cozy N Safe

Oxford Street, Wolverhampton,  
West Midlands, WV14 7DP, U.K.

Tel: +44 (0) 1902 494905

Fax: +44 (0) 1902 490211

Email: [enq@cozynsafe.com](mailto:enq@cozynsafe.com)