

CHILD RESTRAINT INSTRUCTLON MANUAL BBC -513

GROUP 1+2+3
Suitable for 9kg to 36kg
(9 months to 11 years approx)



FITTING INSTRUCTIONS

NOTICE

1. This is a "Universal" child restraint; it is approved to ECE Regulation 44. 04 for general use in vehicles and will fit most, but not all, vehicle seats.
2. A correct fit is likely if the vehicle manufacturer has declared in the vehicle handbook that the vehicle is capable of accepting a "Universal" child restraint for this group.
3. This child restraint has been declared "Universal" under more stringent conditions than those applied to earlier designs which do not carry this notice.
4. If in doubt, consult either the child restraint manufacturer or the retailer.

Only suitable if the vehicle is fitted with 3-point static, 3-point retractor safety belts, approved to UN/ECE Regulation No. 16 or other equivalent standards.

EXTREME HAZARD

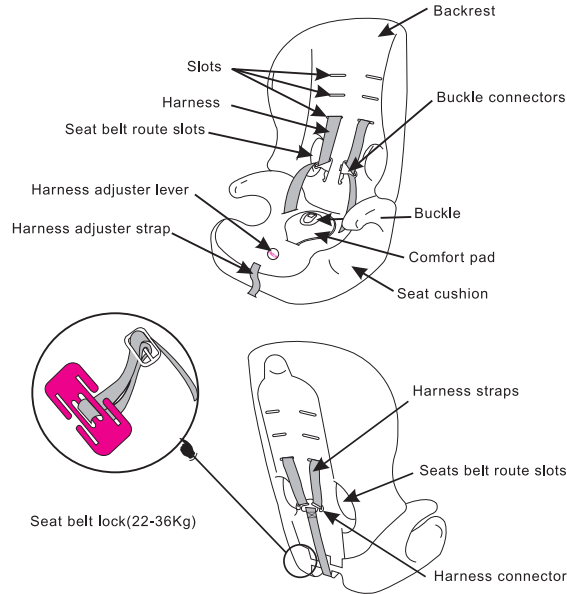
Do not use in passenger seats equipped with airbags (SRS)

WARNINGS

THESE INSTRUCTIONS ARE IMPORTANT. PLEASE READ CAREFULLY AND RETAIN FOR FUTURE REFERENCE.

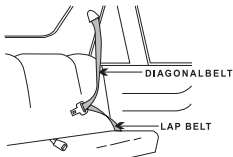
- PLEASE READ THOROUGHLY BEFORE COMMENCING INSTALLATION AS AN INCORRECT. INSTALLATION COULD BE DANGEROUS.
- DO NOT USE THIS CHILD SEAT IN PASSENGER SEATS EQUIPPED WITH AIRBAGS.
- This child seat can be used with the backrest for children of 9 to 25kg in weight(approx. 9 months to 7 years)
- This child seat can be used without the backrest fitted for children of 15 to 36kg in weight.(approx. 4 years to 11years)
- This child seat can only be installed forward facing using a three-point lap and diagonal seat belt.
- Do not use this child seat in the home. It has not been designed for home use and should only be used in your car.
- The safest seating position for a child car seat is on the rear seat of a vehicle.
- Never use the child seat without fastening the child's harness correctly, and never attempt to use it without fastening it into the car.
- Do not add to or modify the seat in any way.
- Do not leave your child unattended in the seat at any time.
- Car interiors can become very hot when in direct sunlight, it is therefore recommended that the child seat should be covered when not in use. This prevents components particularly those attached to the child seat becoming hot and burning the child.
- In the event of an emergency it is important that the child can be released quickly. This means that the buckle is not fully tamper proof and so your child must be taught never to play with the buckle.
- Luggage and other heavy or sharp objects should be secured in the car. Loose objects are liable to cause injury in the event of an accident.
- Periodically inspect the harness for wear, paying particular attention to attachment points, stitching and adjusting devices.
- Store this child seat in a safe place when it is not being used. Avoid placing heavy objects on top of it. Do not allow your child seat to come into contact with corrosive substances e.g. battery acid.

PARTS AND FITTINGS



THE TYPE OF APPROVED SEAT BELT YOU MUST HAVE

WARNING:THE CAR SEAT SHOULD NOT BE FITTED IN A PASSENGER SEAT OF A CAR THAT HAS AN AIR BAG FITTED,(SRS)



Your child seat can only be installed forward facing using a three-point lap and diagonal seat belt in the front or rear passenger seats of the car.

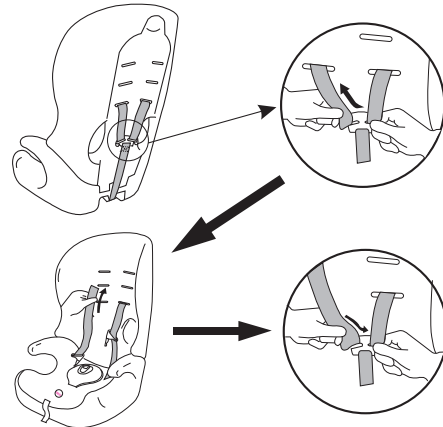
CORRECT SHOULOER STRAP HEIGHT



DO NOT USE THE UPPER SLOTS ON THE BACKREST.

Always check that the shoulder straps are at the correct height for your child. The child's shoulders should always be below the slot for the harness.

CHANGING THE SHOULDER STRAP HEIGHT



Firstly, release the strap holding the backrest cover on to gain access to the harness. Slide one of the harness straps off the harness connector.

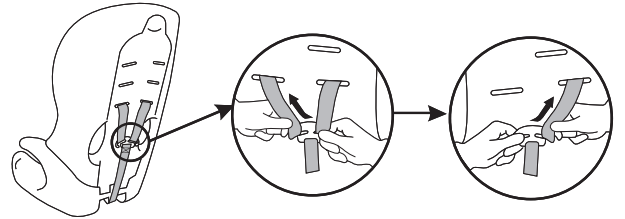
Then from the front of the seat, pull it through the slot in the seat's backrest and fabric cover. Thread the harness strap back through the next hole up or down on the seat's backrest.

Re-thread the harness strap back onto the harness connector at the back of the seat. Repeat the same process for the other harness strap. Make sure both of the straps go through slots at the same height.

Do not use the top two slots in the backrest. These are for the seat belt lock only.

REMOVING ALL STRAPS

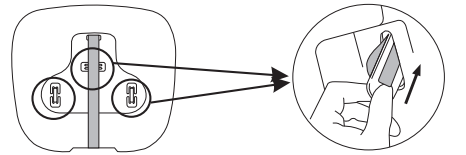
REMOVING THE SAFETY HARNESS SHOULDER STRAPS



Re lease the elastic strap at the bottom of the backrest cover to gain access to the harness.

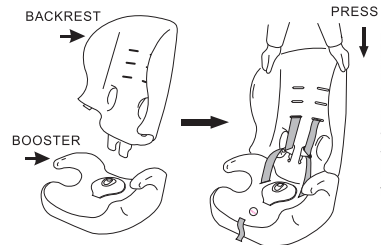
Slide both of the harness straps off the two harness connectors at the back of the backrest and pull the webbing through the slots in the seat's backrest and fabric cover.

REMOVE THE CROTCH STRAP AND SAFETY HARNESS LAP STRAPS



Turn both of the side webbing retainers on their narrowest end and feed them through the slots in the base of the seat and then through the slots in the fabric cover.

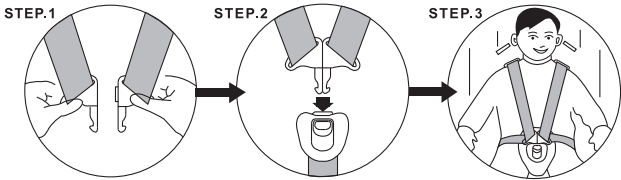
FITTING TOGETHER THE SEAT



1. Prepare the fabric cover of the booster. Make sure it don't cover the slots.

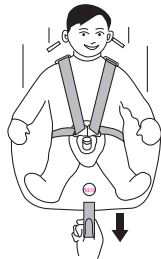
2. Insert the backrest into the slots. When you press the backrest, the top of the backrest should incline frontad a little.

FASTENING THE SAFETY SEAT BUCKLE



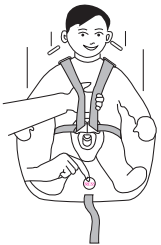
Step1. Slot the two metal sections of the buckle connectors together.
Step2. Slot the two buckle connectors into the slot in the top of the buckle until they "click" into place.
Step3. Always check the harness is correctly locked by pulling the shoulder straps upwards.
To release the harness, press the red button on the buckle downwards.

TIGHTENING THE HARNESS



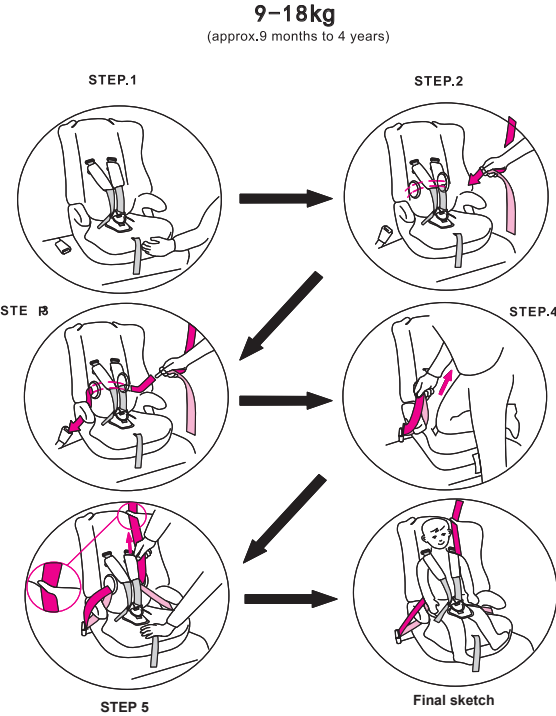
Pull the shoulder straps upwards to remove the slack from the lap sections of the harness then pull the adjuster strap until the harness is fully tightened. The harness should be adjusted as tightly as possible without causing discomfort to your child. Ensure that the lap strap portion of the harness is located as low as possible towards the thighs-not around the tummy. A loose harness can be dangerous. Check the harness adjustment and tighten each time the child is placed in the seat.

SLACKENING THE HARNESS



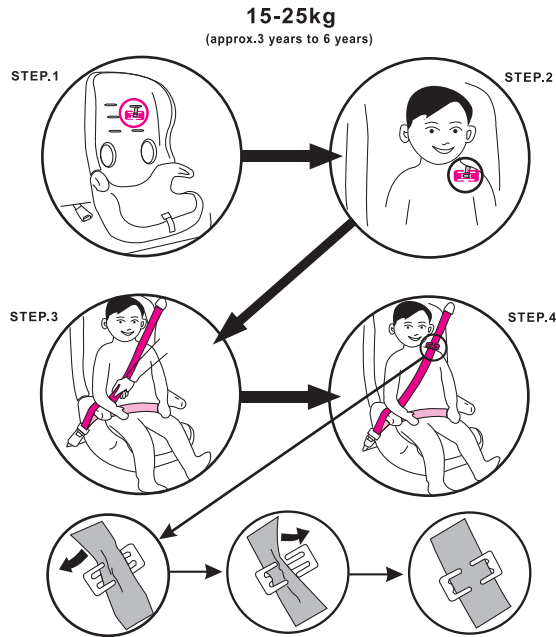
The harness is slackened by pressing the lever (under the seat cover) on the front of the seat. Press down on the label marked "Press" as you grip the two shoulder straps with your other hand. Pull the shoulder straps towards you to loosen the harness. Take care when you adjust the shoulder straps that you do not trap the harness adjuster straps as you press the lever down.

FITTING THE CAR SEAT WITH THE 3-POINT LAP&DIAGONAL SEAT BELT



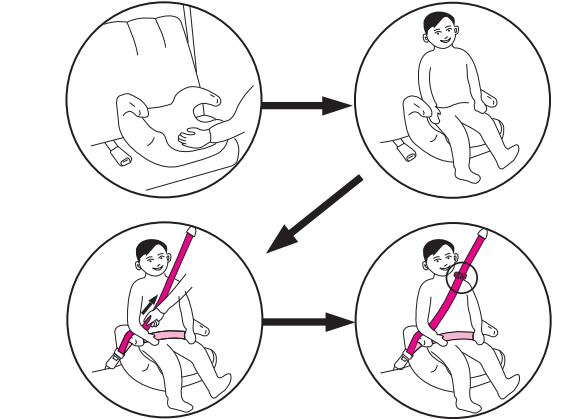
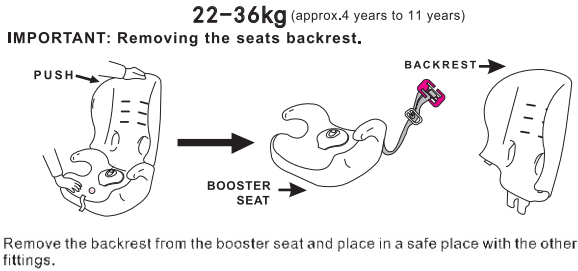
Step1. Place the child safety seat on the vehicle's seat ensuring it is firmly pressed against the car seat backrest.
Step2. Thread the car seat belt in through the hole in the seat's plastic backrest Furthest from the car's seat belt buckle, and then out through the other hole and fasten it into the seat belt buckle.
Step3. Check the webbing of the seat belt has not become twisted or tangled and that lap belt goes under the armrest and diagonal belt cover armrest before Proceeding.
Step4. Place your knee on the safety seats seat unit and grip the top piece of seatbelt webbing. Pull the webbing upwards to tighten the lap,diagonal belt.
Step5. Finish tightening the webbing by pulling the diagonal strap upwards until there is no slack and the seat is held firmly in place. Now can strap child into the seat.
Make sure the seat belt has not become twisted. Also check that the cover is not impeding the movement or fit of the seat belt webbing in anyway.
To release your child unfasten the safety harness as described in these instructions.

FITTING THE CAR SEAT USING THE SEAT BELT LOCK



IMPORTANT: before fitting the seat remove the shoulder straps, crotch strap and lap straps and then fit the seat belt lock as shown in the instructions.
Step1.Place the child safety seat on the vehicle's seat ensuring it is firmly pressed against the seat's backrest.
Step2.Place the child on the safety seat with the seat belt lock on the child's shoulder.
Step3.Fasten the seat belt, making sure that the lap belt webbing goes under both armrests and the diagonal belt webbing goes over the armrest near the buckle. Check that the webbing has not become twisted and tighten the seat belt by pulling the diagonal strap upwards.
Step4.Feed the diagonal portion of the seat belt through the seat belt lock (see fastening the seat belt lock section) and check that all of the slack has been removed from the seat belt.
Make sure the seat belt has not become twisted. Also check that the cover is not impeding the movement or fit of the seat belt webbing in anyway.
To release your child unfasten the seat belt in the normal way.

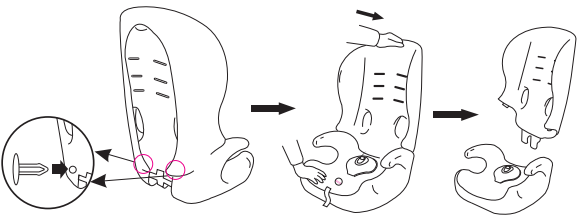
FITTING THE BOOSTER SEAT



IMPORTANT: THE SEAT BELT LOCK MUST BE USED.
The seat belt lock can be found inside the cover at the back of the booster cushion.
Step1. Place the booster seat on the seat of the car ensuring it is firmly against the car seat's backrest.
Step2. Place the child in the booster seat.
Step3. Fasten the seat belt, making sure that the lap belt webbing goes under both armrests and the diagonal belt webbing goes over the armrest near the buckle. Check that the webbing has not become twisted then tighten the seat belt by pulling the diagonal strap upwards.
Step4. Check the seat belt to ensure there is no slack and the belt is not twisted. **Make sure the seat belt has not become twisted. Also check that the cover is not impeding the movement or fit of the seat belt webbing in anyway.**
To release your child, simply unfasten the seat belt in the normal way.

CARE AND MAINTENANCE

THESE INSTRUCTIONS ARE IMPORTANT. PLEASE READ CAREFULLY AND RETAIN FOR FUTURE REFERENCE.



BACKREST COVER REMOVAL. First,Pull the plastic button at the back of the backrest cover off the backrest. Take out it from the back of the backrest cover. Slide the cover off. The covers can now be cleaned.

BOOSTER SEAT COVER REMOVAL. First, remove the seat backrest. Release the elastic strap, Slide the cover off. The covers can now be cleaned.

THE COVER SHOULD BE HAND WASH. Use only a mild hand soap and warm water. Do not use chemical cleaners and never attempt to bleach or dye the webbing. Allow to dry naturally.

NOTICE
1. This is a "Universal" child restraint; it is approved to ECE Regulation44. 04 for general use in vehicles and will fit most, but not all, vehicle seats.
2. A correct fit is likely if the vehicle manufacturer has declared in the vehicle handbook that the vehicle is capable of accepting a "Universal" child restraint for this group.
3. This child restraint has been declared Universal under more stringent conditions than those applied to earlier designs which do not carry this notice.
4. If in doubt, consult either the child restraint manufacturer or the retailer.

Only suitable if the vehicle is fitted with 3-point static, 3-point retractor safety belts, approved to UN/ECE Regulation No. 16 or other equivalent standards.