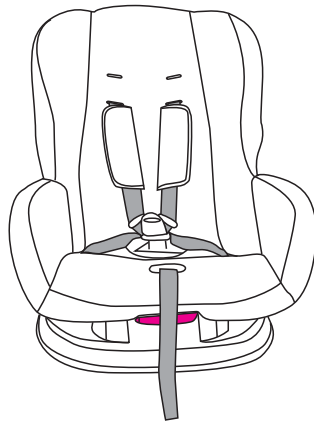


EDINBURGH ROADSTAR CONVERTIBLE CARSEAT
CHILD RESTRAINT INSTRUCTION MANUAL



GROUP 0+,1
FITS CHILDREN 0-18KG

No child restraint can guarantee absolute protection from injury in every crash. However to ensure that your child gets all the protection designed into the restraint, please read and follow this manual.

A.IMPORTANT TIPS

Warning! Do not use forward facing before the child's weight exceeds 9 kg. Failure to follow each of the following instructions can result in your child striking the vehicles interior during a sudden stop or crash.

- * These fitting instructions should be safely stored in a place where they can be easily found.Keep it for future reference.
- * This child restraint is suitable for group 0+ & 1, the weight from newborn to 13 kg (Group 0+) and from 9 kg to 18 kg (Group 1).
- * For maximum protection, the center rear seat position is recommended for the safest position in most vehicles for installing a child restraint.
- * This child restraint should not be modified or adapted with new fittings, without previous authorization by the competent authority. Please ensure that you carefully follow the manufacturer's instructions when fitting this child restraint.
- * Make sure that both the child's safety belt and vehicle 3-point safety belt are properly tightened so as to ensure maximum protection for your child.
- * Check that the belt webbing has not become twisted. And make sure that the belt webbing does not get caught in the door or rubs against sharp corners of the seat or car body. If the belt is frayed or cut, replace it with a new one.
- * After a violent impact the seat and belts may be damaged. Therefore, it is advisable to replace them.
- * Never leave your child in the seat without adult supervision.
- * Always make sure that you are not carrying any unsecured objects, especially on the back shelf, which, in case of an accident, may injure the car's occupants.
- * Should the car have been parked in strong sunshine please check that the child restraint has not become too hot before placing your child in the seat.
- * In case of long trip, make frequent stops, children get tired easily.
- * Never use a second hand child restraint. It may have suffered structural damage, which may make the child restraint extremely dangerous.
- * The lap strap should be worn low down so that it holds the pelvis firmly.
- * Only suitable for use in the listed vehicles fitted with 3 point safety belts, approved to ECE Regulation No. 16 or other equivalent standards.
- * Any luggage or other objects liable to cause injuries in the event of a collision shall be properly secured.
- * The child restraint must not be used without the seat cover.
- * Do not to use any load bearing contact points other than those described in the instructions and marked in the child restraint.
- * The seat cover should not be replaced with any other than the one recommended by the manufacturer, because the cover constitutes an integral part of the restraint performance.

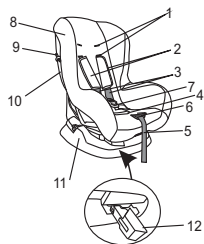
B.Legal requirements :

1.This is a "Universal" child restraint. It is approved to Regulation No. 44, 04 series of amendments, for general use in vehicles and it will fit most, but not all, car seats. A correct fit is likely if the vehicle manufacturer

has declared in the vehicle handbook that the vehicle is capable of accepting a "Universal" child restraint for this age group. This child restraint has been classified as "Universal" under more stringent conditions than those which applied to earlier designs which do not carry this notice.

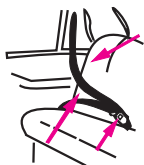
2. Only suitable if the approved vehicles are fitted with 3 point safety-belts, approved to UN/ECE Regulation No.16 or other equivalent standards.

C. SPECIAL FEATURES



- 1. Shoulder strap slots
- 2. Shoulder pads
- 3. Shoulder harness straps
- 4. Buckle strap slot
- 5. Release handle for seat recline
- 6. Harness adjustment button and strap
- 7. Buckle
- 8. Seat cover
- 9. Metal harness ring
- 10. Back harness slot
- 11. Base harness slot
- 12. Folding base support foot

D. INSTALLATION OF THE SEAT IN A CAR



Note: The child restraint is only suitable for use with 3-point safety belts, approved to ECE R16 or equivalent standards.

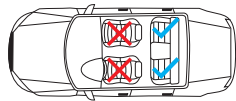
D.1 RECLINE POSITION ADJUSTMENT

Note: Before fixing a child in the child restraint, the seat must be set on the maximum recline position for rear-facing use, or in the sitting position for forward-facing use. Pull up red release handle and push seat into desired position. Test that the seat has 'clicked' into and locked into position.



To achieve that, use the lever located in front of the child restraint between the sitting part and the base to adjust the desired position. Pull up the lever and hold it, at the same time pull back or forward the sitting part of the child restraint, then release the lever while the sitting part is in the desired position and push it until you hear a clear audible click sound.

D.2 INSTALLATION IN THE CAR



Child safety seat must be used on the rear seat of car

Warning!

Extreme Danger: Do not use a rear-facing child restraint in passenger seats equipped with airbag!

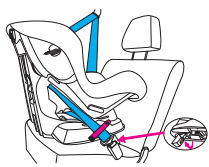
D.3 ROUTING OF THE SEAT BELT

1. For group 0+(less than 13kg) use, put the child restraint in a rear-facing position and use the base support on the seat of car.

Warning!: Do not place your child in a sleeping bag, blanket or other bulky wrapping before putting child in the restraint. The shoulder straps will not fit snugly and child won't be safe.

2. For group(9-18kg)use, place the car seat in forward facing position on the seat of the car.

TWO KINDS OF INSTALLATION METHODS FOR CHILD SAFETY SEAT



(Fig. II less than 13KG)
Rear-facing position



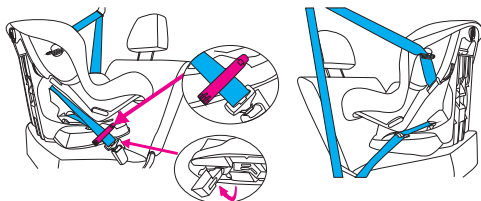
(Fig. III 9-18KG)
Forward-facing position

1. Group 0+, rear-facing installation (Suitable child's weight from newborn to 13kg), please make sure to use rear-facing position (Fig II), the seat must be located at the maximum tilt angle (3 stalls)and use base support. And make sure to use red clip.

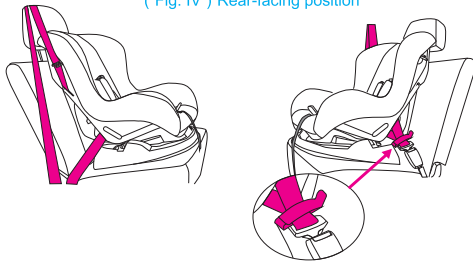
Note: Extreme danger. Do not use a rear facing child restraint in passenger seats equipped with airbag! Do not use in forward facing position when child's weight under 9kg.

2. Group I, forward facing installation (Suitable child's weight between 9 to 18 kg), please make sure to use forward facing position (Fig III). And make sure to use red clip.

Install child safety car seats with three-point seat belts



(Fig. IV) Rear-facing position



(Fig. V) Forward-facing position

1. According to child's weight, place the child seat on the vehicle seat you can choose rear facing (Fig II) or forward facing (Fig III).

Important: when you finish the installation, please lock the vehicle belt with the red clip

2. Method for rear-facing (Fig IV): first pull the blue support foot forward out of the base, lock into position. Install the safety seat onto the rear seat of the vehicle. Pull out the vehicle seatbelt and pass through cavity behind car seat back and lock into vehicle seat belt buckle. The diagonal top part of the seat belt is then looped through both the metal ring and back slot, on one side. The lower 'horizontal' seat belt part is looped through both base slots (blue dot) Now pull the seat belt tight and test that it is secure.

Note: check that seat belts are not twisted or loose after installation.

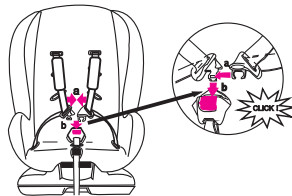
Important : finally, to complete installation attach folding red lock clip over both harness webbings just above the vehicle seat belt buckle and lock (Fig IV).

3. Method for forward-facing (Fig V): place car seat in forward facing position on the rear seat of vehicle and adjust to sitting position. Pull out the vehicle seat belt and pass through cavity behind car seat back and lock into vehicle seat belt buckle. The diagonal top part of the seat belt is then looped through both the metal ring and back slot. The lower horizontal seat belt part is installed in the rear back grooves (red bot) Now pull the seat belt tight and test that it is secure.

Note: check that seat belts are not twisted or loose after installation.

Important : finally, to complete installation attach folding red lock clip over both harness webbings just above the vehicle seat belt buckle and lock (Fig V).

On vehicle journeys, regularly check that all belts remain secure and tight. Always retighten seat belts again, if the seat recline position is changed.



E.1 Locking & Unlocking the harness

1. Join both buckle tongues together and slide into buckle. Listen for a distinctive 'click'. Test by pulling on the webbing.

Note: regularly check that the buckle is secure during use.

2. To release the buckle, press the red button located on the buckle downwards and pull out the buckle tongues.



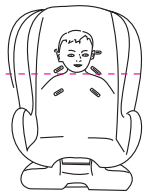
(Fig. VII)

E.2 Adjust the length of harness

To ensure maximum protection for your child, always tighten the harness so that it is snug and flat against the child's body. Straps should never be twisted or loose.

E.2.1 To tighten harness, press adjuster button on front of seat between child's legs and pull strap outwards until desired tightness is achieved.

E.2.2 To lengthen harness, press adjuster button on front of seat between child's legs, while simultaneously pulling the harness forward. Do not pull on the seat cover or any cover accessories.



(Fig. VIII)

E.3 ADJUST THE HEIGHT OF THE HARNESS

There are 3 harness positions available you can select from, according to your child's height. For Group 0+, weight from newborn to 13kg, you should use the lowest positions. For Group 1, the mounting height of the harness must be in harness slots that are level with or nearest to the child's shoulder height. Never install 25mm or more above or below shoulder height.

Always ensure that the harness slots used are as level as possible to the child's shoulder height

TO REMOVE HARNESS FOR ADJUSTING HEIGHT

1. Put seat into full recline position.
2. Fully loosen harness using front adjuster.
3. Reach into cavity at rear of seat for metal strap connector.
4. Slide each strap off metal connector.
5. Pull strap through slot and reposition through new slot height.
6. Reconnect to metal strap connector.
7. Repeat for second strap.
8. Ensure straps are not twisted and are installed in the same level slot.
9. Test by pulling front adjuster strap to tighten, then grasp harness and pull forward.
10. To restore previous position of harness, repeat above operation in reverse order.

Always re-tighten seat belts again, if the seat recline position is changed.

F. Removal of car seat cover

1. To remove the child restraint cover, please do the same operation as described in E.3 (Changing the height of harnesses).
2. Release the crotch harness, slide it through the strap slot in the cover. Remove the cover.

G. WASHING INSTRUCTIONS

1. The cover may only be washed by hands in the temperature below 30°C, using soft detergents, do not bleach, do not whirl and do not dry in drier.
2. A part of the car seat is made of plastic and it can be cleaned using slightly warm water with soap. Do not use aggressive cleaning agents.
3. The belts should be cleaned with a damp cloth. Do not use any solvents or bleaches that could damage the webbing and make the belt unsafe.

Upper material: 100% Polyester

Padding: 100% Polyester



Distributed by:
BABY FACTORY (NZ) Ltd
58 Stonedon Drive
East Tamaki
Auckland NZ
Ph. 09 274 4986
www.babyfactory.co.nz