

Edinburgh

ISIZE INFANT CAPSULE Instruction Manual

ENHANCED CHILD RESTRAINT SYSTEM INSTRUCTION

Stature: 40-85cm

Weight: 0-13 KG



TESTED & APPROVED
ECE-R129
European Commission for Europe



i-Size ECRS (40-85cm) Notice:

- This is an i-Size Enhanced Child Restraint System. It is approved according to UN Regulation No.129, for use in, i-Size compatible vehicle seating positions as indicated by vehicle manufacturers in the vehicle users' manual.
- If in doubt, consult either the Enhanced Child Restraint System manufacturer or the retailer.



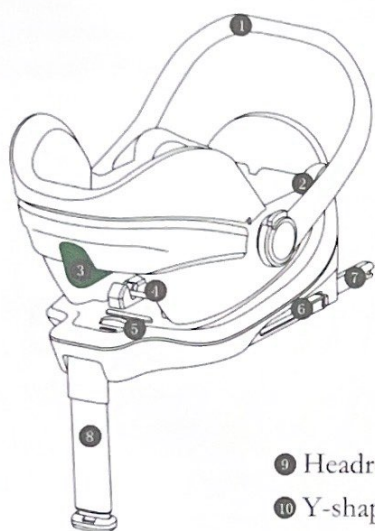
IMPORTANT - DO NOT use the device in seating positions where an active frontal airbag installed.

i-Size ECRS



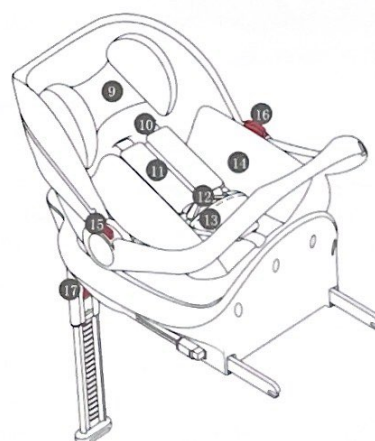
Additional marking





- ① Handle
- ② ③ Belt guide hook
- ④ Infant carrier shaft
- ⑤ Infant carrier release button
- ⑥ Isofix release button
- ⑦ Isofix attachment
- ⑧ Support leg

- ⑨ Headrest
- ⑩ Y-shaped belt
- ⑪ shoulder pad
- ⑫ Buckle
- ⑬ Crotch pad
- ⑭ Sleeping pad
- ⑮ ⑯ Handle adjusting button
- ⑰ Support leg adjusting button



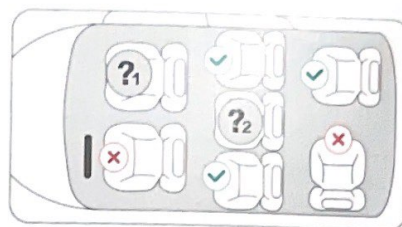
- This product can be rearward-facing used for children with a stature of 40-85cm (Weight: 0-13kg, about 0-15 months old), using ISOFIX+Support leg to fix the child restraint system.
- This product can also be installed by using the adult 3-point safety belt of your car.
- Please keep for future reference, a storage compartment for the instructions is located on the back of the child seat.
- Do not use this child seat at home. It has not been designed for home use and should only be used in your car.
- Do not use rearward facing child seat in seating positions where there is an active frontal airbag installed, death or serious injury can occur. For the reason of safety, the child seat must be fixed inside the vehicle using ISOFIX anchorages even if you do not put your child inside the child seat.
- Any straps holding the restraint to the vehicle should be tight ;
- Any support-leg should be in contact with the vehicle floor ;
- Any straps restraining the child should be adjusted to the child's body ;
- Straps should not be twisted ;
- The device should be replaced when it has been subject to violent stresses in an accident ;
- Follow closely the installation instructions provided by the manufacturer ;
- Don't leave your child in the device unattended. Any luggage or other object liable to cause injuries in the event of a collision shall be properly secured ;

- The ECRS shall not be used without the cover ;
- The seat cover should not be replaced with any other than the one recommended by the manufacturer, because the cover constitutes an integral part of the restraint performance ;
- The instructions shall be retained on the device for its life period or in the vehicle handbook in the case of built-in restraints ;
- The user shall also be referred to the vehicle manufacturer's handbook ;
- Never use a second-hand product , as you can never be certain what was happened to it.

3.1 Install position of the child seat in vehicle



Only suitable if the approved vehicles are fitted with adult 3-point belt, approved to UN/ECE Regulation No.16 or other equivalent standards.



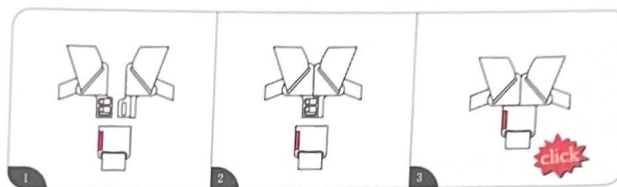
- ?₁ Not to use rearward-facing in seating positions where an active frontal airbag is installed.
- ?₂ Only use on this seat if ISOFIX anchorages are fitted.

3.2 Checking the shoulder strap height



Always check that the shoulder straps are at the correct height for your child. The child's shoulder straps should always be threaded through the slots in the cover and seat shell that are closest to the top of your child's shoulders.

3.3 Usage of buckle



buckle (sketch map)

- Step1: Get the left and the right pieces of buckle together.
- Step2: Insert the two pieces into the slot of the buckle. At the same time, hearing "click" means the buckle gets stuck, pull the pieces of the buckle and check whether the buckle is locked correctly.
- Step 3: If you want to release the safety belts, it needs to press the red button, then the pieces pop up.

3.4 Adjust the length of the Y-shaped belts

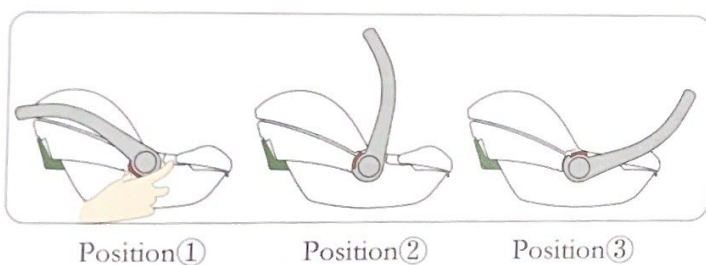


- **Picture 1: Loosen the Y-shaped belts**
The Y-shaped belts can be slackened by pressing the adjuster (under the seat cover). Press the adjuster as you grip the two Y-shaped belts with your other hand. Pull the Y-shaped belt towards you to loosen the Y-shaped belts.



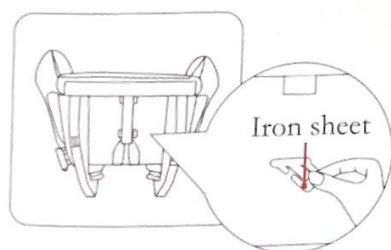
- **Picture 2: Tighten the Y-shaped belts**
Pull the front upwards until the Y-shaped belt is fully tightened. The Y-shaped belt should be adjusted tightly without causing discomfort to your child. A loose Y-shaped belt can be dangerous. Check the Y-shaped belt adjuster and tighten it each time when the child is placed in the seat.

3.5 Adjust the handle



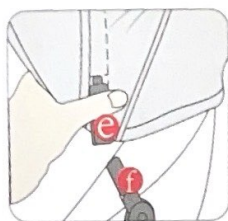
- The handle can be adjusted in 3 positions. At the same time, hold the handle knob at both ends of the handle, rotate the handle to the desired gear, and release the handle adjusting button. Turn the handle front and rear, make sure the handle is locked by the handle adjusting button.

3.6 Remove the buckle



- As shown in the picture, pass through the iron sheet from the bottom hole back into the infant carrier, and then the buckle can be removed.

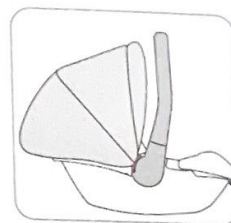
3.7 Installing Canopy



picture 1



picture 2



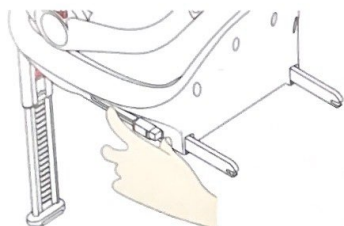
Effect picture

- As shown in the picture, insert the bracket socket **e** of the canopy into the sockets **f** on both sides.
- As shown in the picture, the expansion and contraction of the canopy can be adjusted according to your own situation.

! Note: If you need to remove the canopy, reverse the order according to the installation sequence of the canopy.

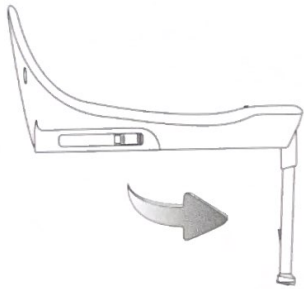
! Note: The high version is equipped with aluminum handles, and the canopy can be used in the car.

3.8 Adjust the ISOFIX attachments

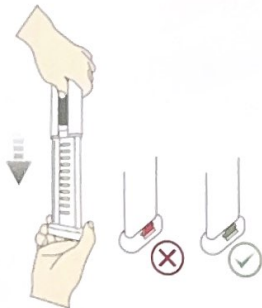


- The ISOFIX attachments can be adjusted for many positions to fit the different positions of ISOFIX low anchorages extending from car seat. Press down the release button to adjust ISOFIX attachment of both sides to the longest.
- Then put the ISOFIX attachments into guide sleeves, and insert them into ISOFIX anchorages. Make sure that you have heard a "click" and the ISOFIX latching indication shows GREEN.
- If you want to release the ISOFIX attachments, just installation of the ISOFIX attachments is finished. Push the red release button of the ISOFIX chuck at the direction as shown, the ISOFIX chuck will be released.
- After installed the ISOFIX chuck, push the child restraint forwards until it is tight against the car seat. Now, the ISOFIX base is installed in place.

3.9 Adjust the length of support leg



- Take out the support leg from the lower cover of the base, which keep about 90° to the base.



- The method to adjust the length of the support leg: Press and hold the adjustment button on the support leg, then adjust the length up and down until it hits the car ground. The bottom of the support leg will turn green.

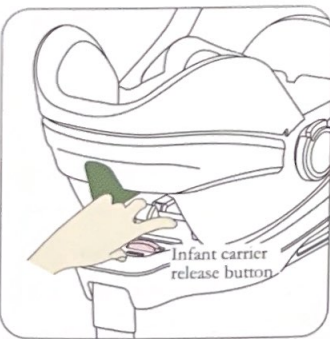
3.10 Install / disassemble the Infant carrier and base (Base is optional extra)



How to install:

The base of the infant carrier has two shafts. Align the two shafts with the slot of the base and place it gently. When you hear a "click", and the red and green indicator sticker on the base is showing in green, the installation is complete.

Note: When finished installation, the infant carrier will not be shaken around.

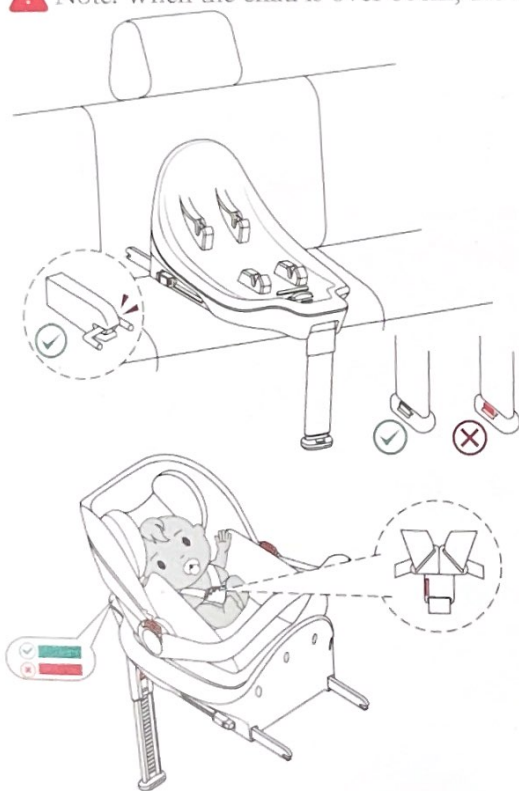


How to disassemble:

Push the basket release button with one hand, and gently lift the handle of the basket with the other hand to remove it.

4.1 Infant Carrier Base(Optional extra) : Use the ISOFIX+support leg to install the infant carrier

! Note: When the child is over 60cm, the headrest and sleeping pad should be removed.



First release the support leg of the base (see 3.9);
then release the ISOFIX attachment (see 3.8);
place the base on the vehicle seat;
The backrest of the base should against the car seat.

Put the child in the infant carrier and lock the buckle;
After the base is fixed, place the infant carrier with the
child on the base (see 3.10), the red and green indicator
sticker on the base is showing green and then check
the seat is locked;



Push the handle of the infant carrier to gear③ (see 3.5),
as shown in the picture.

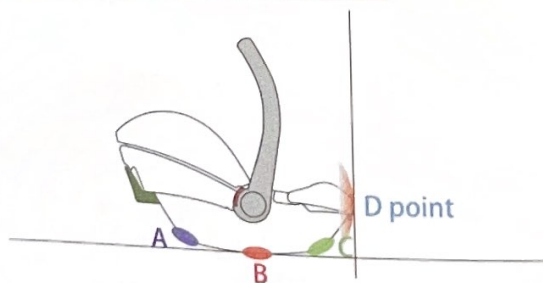
4.2 Use the adult three-point seat belt to install the infant carrier

 Note: When the child is over 60cm, the headrest and sleeping pad should be removed.



- Step 1: As shown in the picture, place the baby into the infant carrier, lock the buckle, tighten the Y-shaped strap (see 3.4), and then put the infant carrier in reverse on the vehicle seat. Ensure the infant carrier to be in close contact with the vehicle seat backrest (please refer to the precautions before installation for details).

Precautions before installation:



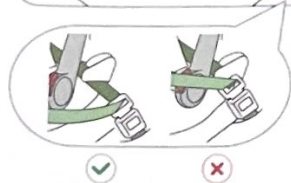
Note: The bottom **plane B** of the infant carrier should be in close contact with the vehicle seat cushion to ensure that the **plane A** and the **plane C** are in balance; the **D point** should be in close contact with the vehicle backrest.



- Step 2: as shown in the picture, pull out the adult three-point belts, and insert the adult three-point belts into the infant carrier belt guide ② on the same side.



- Step 3: As shown in the picture, first, insert the car seat belt into the car seat belt slot and hear a "click" sound, check whether it is locked. Then encircle the shoulder belt and pass through the belt guide hook ③ on the back of the infant carrier.



After the seat belt is fixed, the seat belt slot and the seat belt guide cannot be in this relative position. If in doubt, please consult the product manufacturer!



- Step 4: As shown in the picture, keep the infant carrier in a stable position, press the handle adjustment buttons on both sides of the basket with both hands, and turn it clockwise to gear ③ (see 3.5), and the handle is just against the seat.



Note: Ensure that the seat belt is not twisted, under the premise of not causing discomfort to the child, the seat belt should be tightened as much as possible.

5.1 Daily maintenance

- In daily use, check periodically the child seat. The child seat should be replaced after an accident.
- Please keep this child seat in dry and ventilated place to avoid damp moldy.
- If the child seat becomes dusty, clean the seat belt and the plastic pieces by swiping them with a damp sponge and let it dry under ambience.
- If food or drink drop accidentally on the buckle, disassemble the seat belt from the child seat and rinse it gently by warm water. Leave it dry under ambience.
- For cleaning the entire child seat fabric cover, please refer to the 5.2 washing instruction.

5.2 Washing instruction

Never use any solvent, chemical detergent or lubricant on any part of your child seat.



Hand wash, water
temperature
below 30 °C



Do not bleach



Dry clean, any
solvent except
trichloroethylene.



Do not tumble dry



Do not iron

5.3 Remove and assemble the fabric cover

- Firstly, remove the crotch pad and buckle of the child seat.
- Open the zip on the headrest and remove the headrest cover. Tear the velcros of the backrest cover open and then remove the shoulder straps and comfortable cushion as well as the backrest cover.
- To assemble the fabric cover of the child seat, repeat the above prescribed procedures in reverse order.

Distributed by

Baby Factory (NZ) Ltd

58 Stonedon Drive

East Tamaki Auckland NZ

www.babyfactory.co.nz
