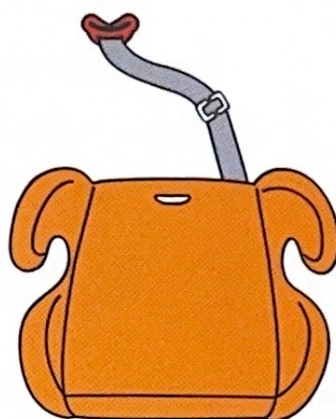


EDINBURGH CHILD BOOSTER SEAT LB-781

GROUP 2+3

Suitable for 15kg to 36kg



FITTING INSTRUCTIONS

Only suitable if the approved vehicles are fitted with 3-point safety-belts, approved to UN/ECE Regulation No.16 or other equivalent standards.

EXTREME HAZARD

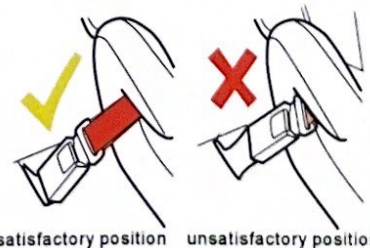
Do not use in passenger seats equipped with airbags (SRS)

WARNINGS

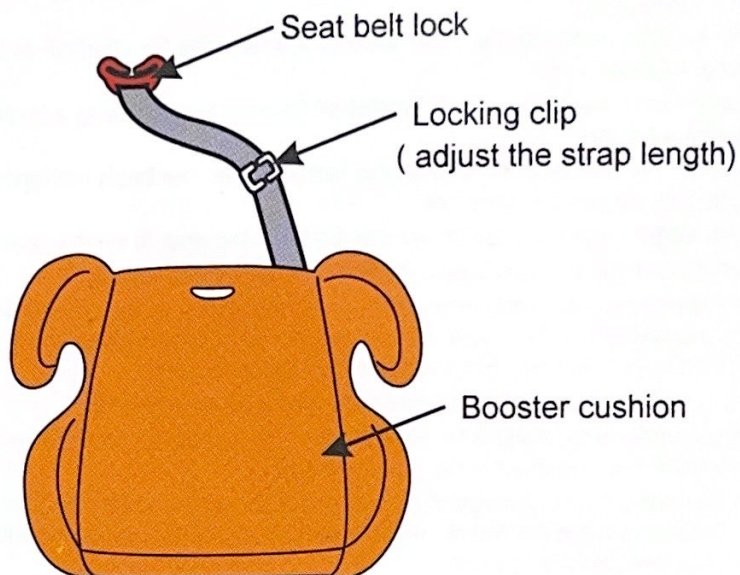
THESE INSTRUCTIONS ARE IMPORTANT. PLEASE READ CAREFULLY AND RETAIN FOR FUTURE REFERENCE.

DO NOT USE THIS CHILD SEAT IN PASSENGER SEATS EQUIPPED WITH AIRBAGS.

1. This booster seat can be used without the harness for children of 15 to 36kg in weight (group 2,3).
2. This booster seat can only be installed forward facing using a three-point lap and diagonal seat belt.
3. Do not use this booster seat in the home. It has not been designed for home use and should only be used in your car.
4. This safest seating position for this booster car seat is on the rear seat of a vehicle.
5. Never use the booster seat without fastening it into the car.
6. It is dangerous to make any alteration or additions to the device without the approval of the competent authority, and a danger of not following closely the installation instructions provided by the child restraint manufacturer.
7. Do not leave your child unattended in the seat at any time.
8. The booster seat should be kept away from sunlight if the seat is not provided with a textile, otherwise it may be too hot for the child's skin.
9. In the event of an emergency it is important that the child can be released quickly. This means that the buckle is not fully tamper proof and so your child must be taught never to play with the buckle.
10. Any luggage or other objects liable to cause injuries in the event of a collision shall be properly secured.
11. Periodically inspect the harness for wear, paying particular attention to attachment points, stitching and adjusting devices.
12. The rigid items and plastic parts of a booster seat must be so located and installed that they are not liable, during everyday use of the vehicle, to become trapped by a movable seat or in a door of the vehicle.
13. Always make sure that any straps holding the seat restraint to the vehicle shall be tight, any straps restraining the child should be adjusted to the child's body, and check that the straps shall not be twisted.
14. Ensuring that any lap straps is worn low down, so that the pelvis is firmly engaged, shall be stressed.
15. The booster seat should be changed when it has been subject to violent stresses in an accident.
16. The instruction can be retained on the child restraint for its life.
17. Do not use any load bearing contact points other than those described in the instructions and marked in the child restraint.
18. Store this booster seat in a safe place when it is not being used. Avoid placing heavy objects on top of it. Do not allow your booster seat to come into contact with corrosive substances e.g. battery acid.
19. The booster seat must not be used without the cover. The seat cover should not be replaced with any other than the one recommended by the manufacturer, because the cover constitutes an integral part of the restraint performance.
20. The satisfactory position of the adult safety-belt buckle relative to the booster seat is as Figure.
21. Do not use other than prescribed load bearing points.

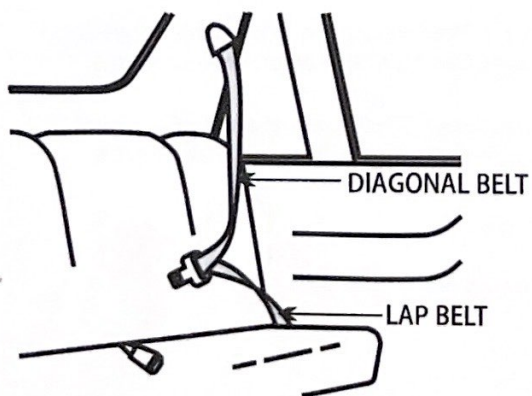


PARTS AND FITTINGS



THE TYPE OF APPROVED SEAT BELT YOU MUST HAVE

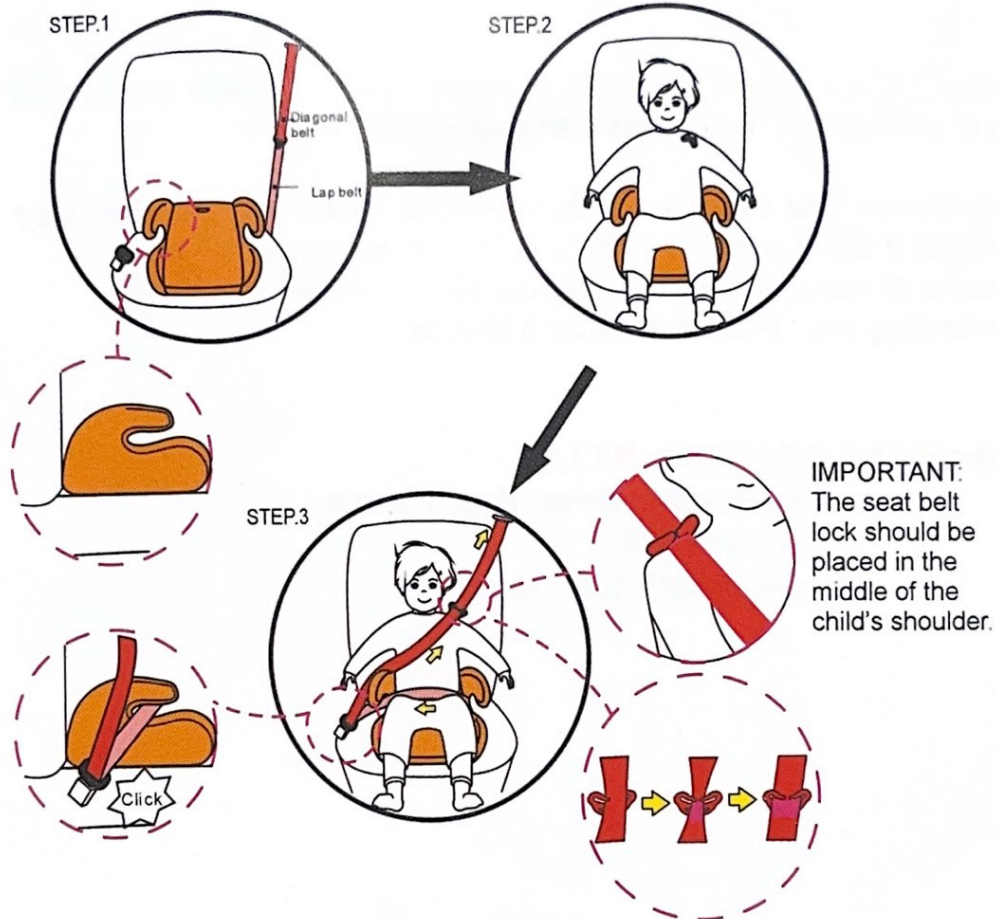
WARNING: THE BOOSTER SEAT SHOULD NOT BE FITTED IN A PASSENGER SEAT OF A CAR THAT HAS AN AIR BAG FITTED.(SRS)



Your booster seat can only be installed forward facing using a three-point lap and diagonal seat belt in the front or rear passenger seats of the car.

FITTING THE CAR SEAT USING THE BELT LOCK

Group 2,3 (15-36kg)
(approx. 3years to 12years)



Step1. Place the booster seat on the vehicle's seat ensuring it is firmly pressed against the car seat backrest.

Step2. Place the child in the booster seat and put the strap with seat belt lock on the child's shoulder and keep the lock on the same level with child's shoulder.

Step3. Fasten seat belt, hear "Click". Make sure that the lap belt webbing goes under both armrests and the diagonal belt webbing goes over the armrest neat the buckle. Make the diagonal pass through the seat belt lock. Check that the webbing has not become twisted and tighten the seat belt by pulling the diagonal strap upwards (See the picture).

Make sure the seat belt has not become twisted. Also check that the cover is not impeding the movement or fit of the seat belt webbing in any way.
To release your child, simply unfasten the seat belt in the normal way.

CARE AND MAINTENANCE

These instructions are important. Please read carefully and retain for future reference.

Headrest ,backrest and base cover removal. Slide the booster seat's cover off. The covers can now be cleaned.

Important: The cover is a safety feature. Never use the child seat without it. Don't put your child's safety at risk by using other makes of replacement cover, could stop the child seat from protecting your child as well as it should.

Supplied by: Babyfactory NZ Ltd.
58 Stonedon Drive, East Tamaki,
Auckland, NZ.
www.babyfactory.co.nz