

Edinburgh



IMPORTANT

BEFORE ASSEMBLING THIS COT READ AND UNDERSTAND THE INSTRUCTIONS.

Do not use mattress other than the one supplied by the manufacturer.
Incorrect mattress can cause death.
Use only accessories as recommended by the manufacturers.
Ensure the top rails and base are fully locked.
Stop using this cot if any part of the cot is broken, torn or missing.

**3-in-1
Deluxe
TRAVEL COT**

KEEP THESE INSTRUCTIONS IN A SAFE PLACE FOR FUTURE REFERENCE.

Edinburgh

Congratulations on your new quality product from our exclusive range of baby products. This exceptional design combines the most unique features that any baby product offers.

We are confident that you will appreciate its many highlights, including its reliability and durability. Your new product has been manufactured to comply with the Highest Quality Standards,



WARNING

- (A) KEEP CHILDREN AWAY WHILE ASSEMBLING/DISASSEMBLING THE COT.
- (B) DO NOT LEAVE ANYTHING ON THE FOLDING COT (SUCH AS TOYS) THAT PROVIDE A FOOTHOLD.
- (C) DO NOT USE THE FOLDING COT NEAR NAKED HEAT SOURCES, BAR HEATERS, OPEN FIRES OR EXPOSED FLAMES.
- (D) KEEP THE FOLDING COT CLEAR OF TRAILING CABLES AND HANGING CORDS.
- (E) KEEP MEDICATION AND SMALL ITEMS THAT A CHILD COULD CHOKe ON, AWAY FROM THE COT.
- (F) YOU SHOULD DISCONTINUE USING THIS TRAVEL COT IF THE COVERING MATERIAL HAS BEEN BITTEN THROUGH.

WARNING

- (A) TO PREVENT FALLS, THE BASSINET MUST NOT BE USED ONCE A CHILD CAN SIT UP.
- (B) NEVER PLACE A CHILD IN THE COT WHEN THE BASSINET IS IN PLACE.
- (C) DO NOT USE THIS COT WITH A CHILD WHO CAN CLIMB OUT, WEIGHS MORE THAN 14KG OR IS TALLER THAN 90CMS.

MAXIMUM WEIGHT CAPACITY FOR THE TRAVEL COT IS 14KG AND UP TO 90CM.

MATTRESS SIZE:

THIS COT IS MADE TO USE A MATTRESS WHICH IS 750MM WIDE 1100MM LONG AND NO MORE THAN 50MM THICK. USING THE WRONG SIZE MATTRESS MAY CREATE HAZARDOUS GAPS THAT COULD RESULT IN SUFFOCATION OR COULD REDUCE THE SIDE HEIGHT OF THE COT WHICH MAY RESULT IN YOUR CHILD FALLING OUT FROM THE COT.

WARNING

- **USE ONLY THE MATTRESS SUPPLIED BY THE MANUFACTURER, INCORRECT MATTRESSES CAN CAUSE DEATH**
- **Use only Accessories As Recommended By The Supplier**
- **Ensure The Top Rails And Base Are Fully Locked.**
- **Do Not Use This Cot If Any Part Of The Cot Is Broken, Torn or Missing**

PARTS LIST



1.



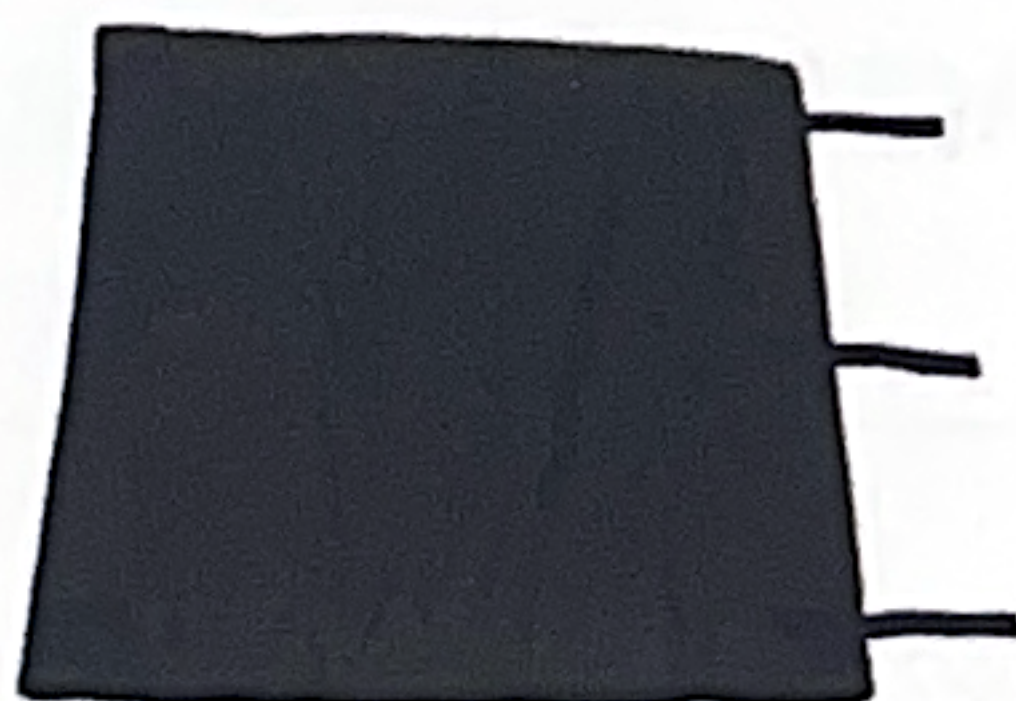
2.



3.



4.



5.



6.



7.



9.



8.

WHEN YOU OPEN YOUR TRAVEL COT CARTON PLEASE ENSURE YOU HAVE ALL THE ITEMS:

1. TRAVEL COT CARRY BAG
2. BASSINET
3. FEMALE - RODS FOR BASSINET
4. MALE - RODS FOR BASSINET
5. MATTRESS
6. CHANGER HANDLES
7. CHANGER
8. TRAVEL COT
9. POLES FOR CHANGER

NO TOOLS NEEDED

Please note images may appear different to actual item.
Images are used for illustrative purposes only.

ASSEMBLY INSTRUCTIONS

OPENING AND UNFOLDING

PLEASE CARRY OUT THE ASSEMBLY OF THE CARRY COT IN THE ORDER BELOW:



1. Unzip and remove carry bag (1)



2. Remove the mattress (5) by unfastening the velcro straps. Remove the rods (4) and (5) and Bassinet (2).



3. Widen the legs of the travel cot



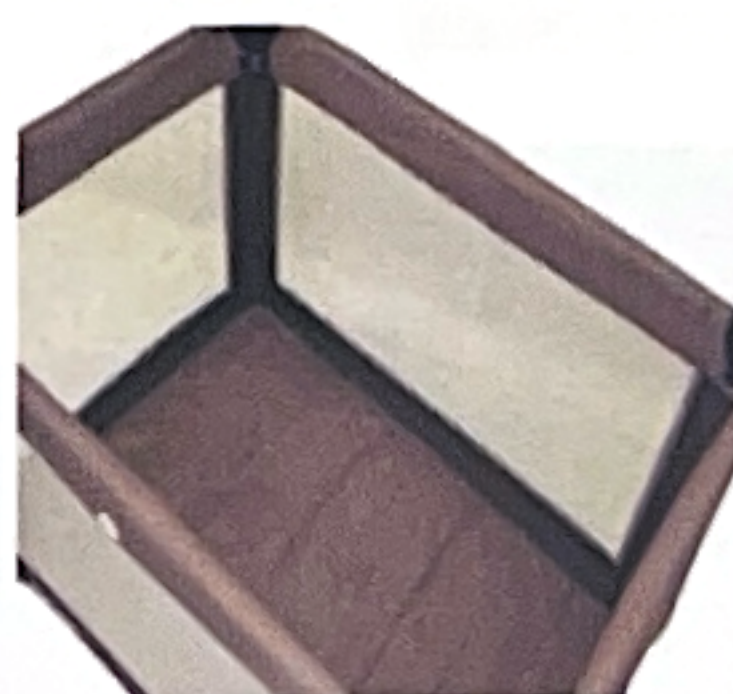
4. Ensure that the base is completely raised up. Lift up the shorter sides. Pull up each until they lock into place.



5. Lift up each of the longer sides. Pull up each rail until it locks into place.



6. Push the base down until it lays flat and all legs are flat. Ensure that the centre locking mechanism is folded on the base. If all the sides are locked the cot should be safe.

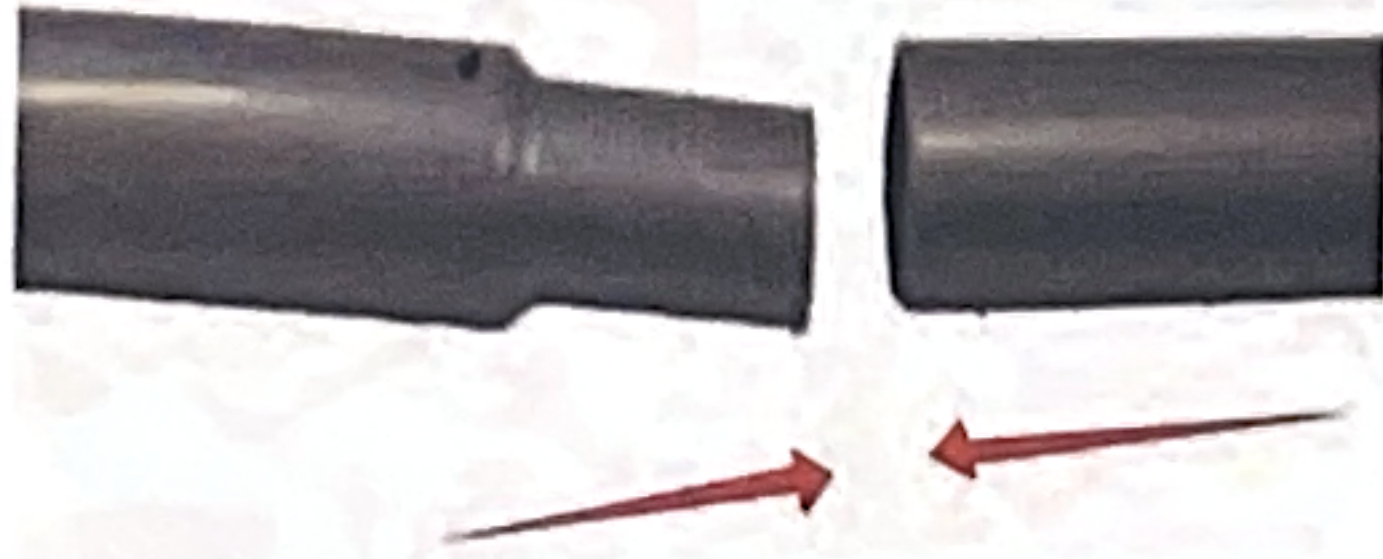


7. Place the mattress (3) into the travel cot (6). Fix the velcro fasteners under the mattress onto the travel cot base.

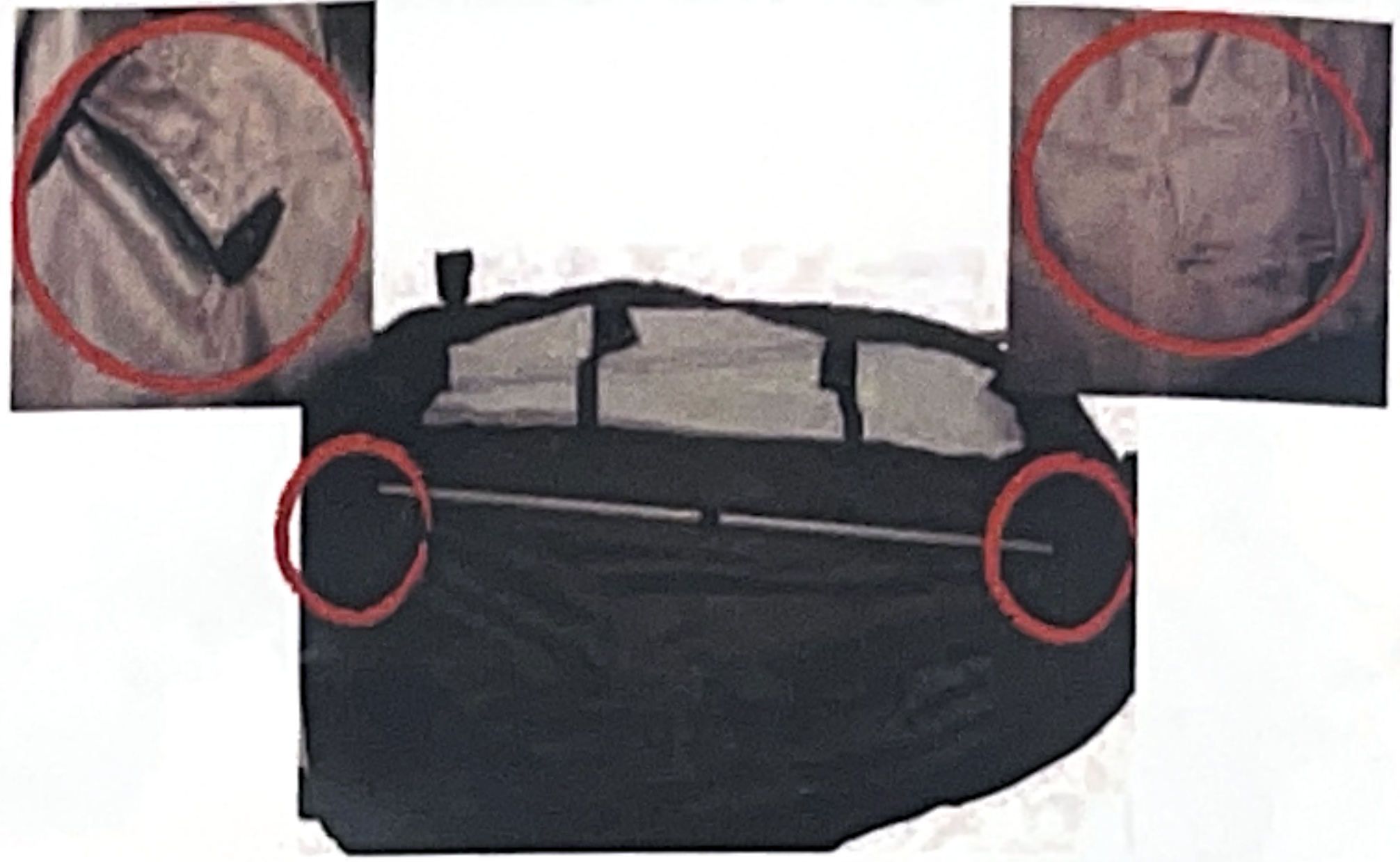
WARNING: BEFORE PLACING THE CHILD INTO THE TRAVEL COT ENSURE ALL THE LOCKING MECHANISMS ARE FULLY ENGAGED.

ASSEMBLY INSTRUCTIONS

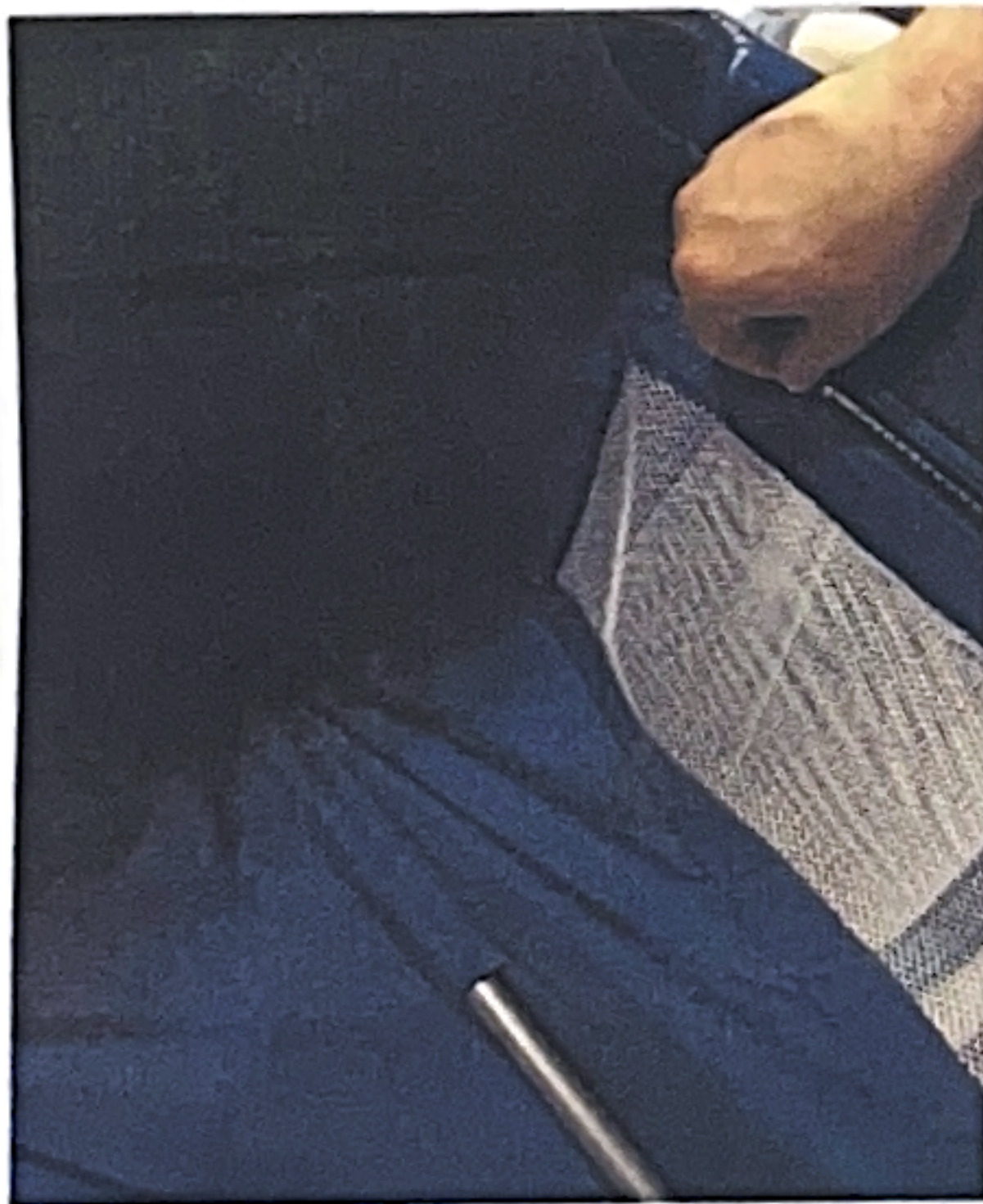
ATTACHING THE BASSINET



1. Attach the female (3) and male (4) rods together.



2. Place the connected rods and place them in the holders on the bassinet. Make sure they are in correctly. Use the velcro strap to stabilise the rods.



3. Zip the bassinet around the sides of the travel cot.



4. Make sure the bassinet is zipped correctly before placing the mattress.



5. Place the mattress over the assembled bassinet.

6. To remove the bassinet first remove the mattress, Unclip the bassinet from all sides, remove the rods from the base of the bassinet.

SECURE, TIGHTEN AND MAINTAIN ALL FASTENING DEVICES.

! WARNING !

- THIS BASSINET SHOULD BE REMOVED BEFORE THE CHILD CAN SIT UP
- NEVER PLACE A CHILD IN THE COT WHEN THIS BASSINET IS IN PLACE
- USE ONLY THE MATTRESS SUPPLIED BY THE MANUFACTURER
- INCORRECT MATTRESS CAN CAUSE DEATH

ASSEMBLY INSTRUCTIONS

FOLDING THE COT



1. Remove the mattress from the travel cot and pull the centre lever all the way up.



2. There are release buttons on each side of the travel cot to release the arms. You must pull the arms up and press the release buttons to loosen the arms. Repeat on all sides.



3. Pull the travel cot together and place all the items inside



4. Place the travel cot on top of the mattress



5. Fasten the mattress around the travel cot with the velcro straps



6. Insert the travel cot into the carry bag store the poles and changer in the side pocket.

ASSEMBLY INSTRUCTIONS

ASSEMBLING THE CHANGER

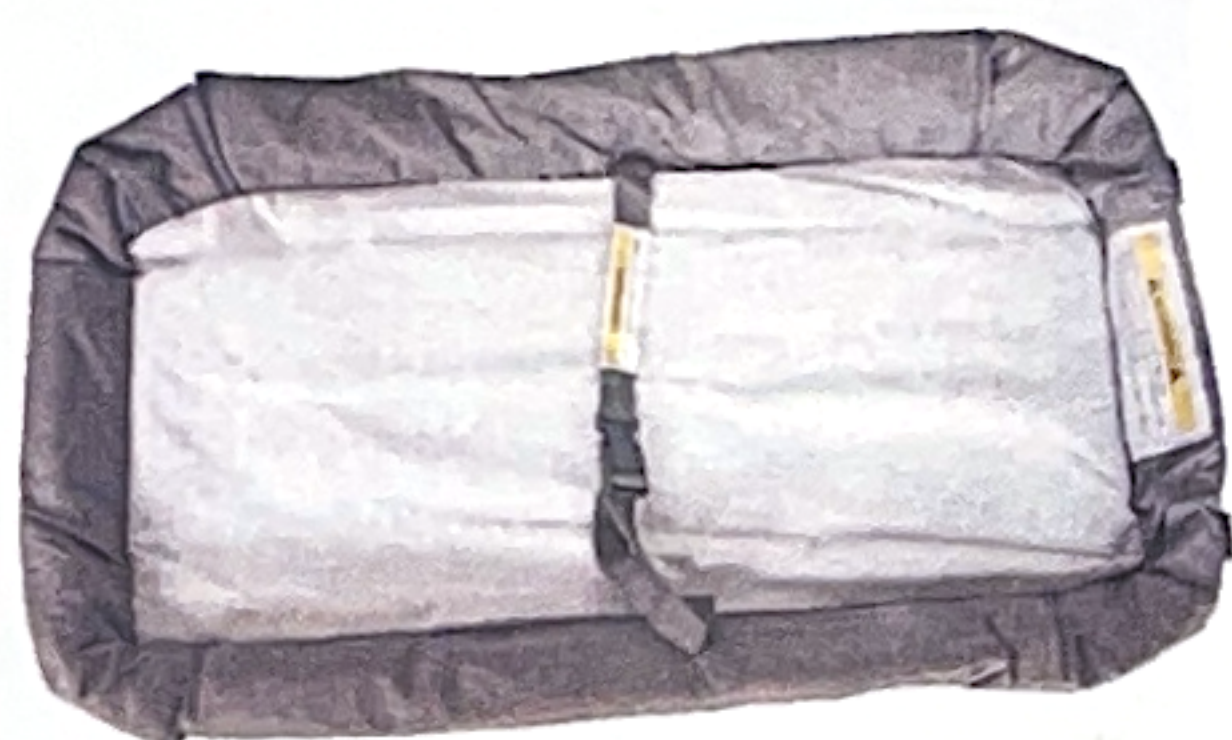


Slide the poles (9) into the changer



Place the changer handles (6) through the slots on the end of the changer (7). Repeat for both sides.

Click the handles (6) with the inserted poles (9)



The Assembled changer

! WARNING !

- NEVER LEAVE CHILD UNATTENDED
- NEVER PLACE A CHILD IN COT WHEN THE CHANGE TABLE IS IN PLACE
- ALWAYS USE THE HARNESS WHEN USING THE CHANGE TABLE

Attaching the Changer to the Travel Cot



! WARNING

USE THIS HARNESS AT ALL TIMES

Snap the changer handles to the sides of the travel cot. Also snap on the handles to the ends of the travel cot. The assembled changer.

CARE AND MAINTENANCE

To ensure your travel cot lasts a long time it is important that you try and maintain it.

To maintain the travel cot:

Wipe it down with a damp cloth and use a mild soap solution if needed. Do not use abrasive cleaners.

Always store this travel cot in a clean and dry place.

To maintain Bassinet and Mattress:

Wipe it down with a damp cloth and use a mild soap solution if needed. Do not use abrasive cleaners.

General Maintenance:

Always check parts regularly for tightness of screws nuts and other fasteners - tighten or replace if required.

To maintain the safety of your travel cot, seek prompt repairs for broken, torn or damaged parts.

Use only the parts and accessories approved by The Baby Factory.

If you have any difficulties in assembling your travel cot you can contact our customer service :

New Zealand - Ph: 09 274 4986

Australia - Ph: 03 9404 1625

Edinburgh

3-in-1
Deluxe
TRAVEL COT

Made in China

Distributed by:
Baby Factory (NZ) LTD
58 Stonedon Drive
East Tamaki
Auckland 2013
New Zealand

The Baby Factory

www.babyfactory.co.nz