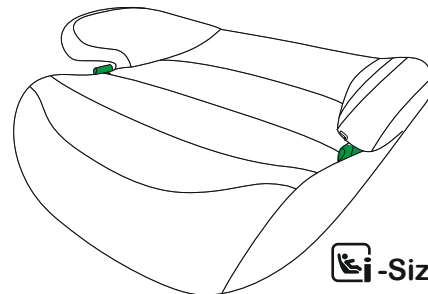


## INSTRUCTION MANUAL



### Neo i-Size EST 224



NAME:

DATE OF BIRTH (DD/MM/YYYY):

ADDRESS:

ALLERGIES/MEDICAL CONDITIONS:

EMERGENCY CONTACT 1:

NAME:

PHONE NUMBER:

EMERGENCY CONTACT 2:

NAME:

PHONE NUMBER:

Cozy N Safe

Oxford Street, Wolverhampton, West Midlands, WV14 7DP,  
UK Tel: +44 (0) 1902 494905 | Email: enq@cozynsafe.com



Universal Booster Cushion Enhanced  
Child Restraint System: 125cm-150cm



## Safety information

**This safety manual and the separate operating manual are components of the product and contribute to its safe use. Non-compliance may lead to serious or even fatal injuries. If in doubt, do not use product and immediately contact your retailer.**

- >Read the operating manual and safety manual.
- >Keep with the product for reference.
- >If the product is given to third parties, include the operating instructions with the product.

### **Risk of injury from Enhanced Child Restraint System**

In the event of an accident at a collision speed of more than 10 km/h, the seat may be damaged without the damage being immediately visible. Serious injuries may result from another accident.

- >Replace product following an accident.
- >Have damaged product inspected (even if it has fallen onto the ground).
- >Regularly check all important parts for damage.
- >Never lubricate or oil parts of the product.
- >Properly dispose of the damaged product.

### **Risk of burns from hot components**

Components of the product can become hot in direct sunlight. Children's skin is sensitive and maybe harmed as a result.

- >Protect the product against intensive direct sunlight when not in use. **Avoid damaging the product**
- >Never use product in a free-standing position, even for testing.
- >Product is not a toy.
- >Ensure that the seat is not trapped between hard objects (vehicle door, seat rails, etc.).
- >Store seat in a safe place when not in use.
- >Keep product away from: Damp, moisture, liquids, dust and salt spray.
- >Do not lean heavy objects on the seat.
- >Do not store seat directly next to sources of heat or in direct sunlight

## Secure product in the vehicle

### **Risk of injury if installed incorrectly**

If the product is installed or used other than as described in the operating instructions, serious or even fatal injuries may result.

- >**Never** secure the seat with a 2-point seat belt.
- >Only use on vehicle seats facing or against the direction of travel.
- >Note and follow the instructions in the vehicle handbook.

### **Risk of injury due to over-long belt lock**

The position of the belt lock affects the protective function of the seat.

- >Select a different vehicle seat if the seat belt lock is in or in front of the dark-green belt guide.
- >If in doubt contact your retailer.

## Use in the vehicle

### **Risk of injury during use**

The temperature in a vehicle can rise to dangerous levels quickly. In addition, it is dangerous to step out of the vehicle from the side facing the street.

- >Never leave a child unsupervised in the vehicle.
- >Only allow the child to board and disembark on the footpath-side.
- >On long journeys, take regular breaks in order to give your child chance to move and play.

### **Risk of injury from slack straps**

Slack straps are areas of the seat belt that lay loosely against the child's body.

Slack straps have a negative impact on the protective function.

- >Check straps are tight and not twisted.
- >Avoid thick clothing under the belt.
- >Ensure that any lap strap is worn low down, and that any impact shield is installed properly, so that the pelvis is firmly engaged, shall be stressed.
- >Never leave your child unattended in the child restraint system in the vehicle.

### **Risk of injury from unsecured objects**

In the case of an emergency stop or accident, unsecured objects or people may cause injury to other occupants in the vehicle.

- >Never secure your child by holding them tightly on your lap.
- >Secure all heavy or sharp-edged objects in the vehicle (e.g. on the parcel shelf).
- >Do not place objects in the foot well.
- >Ensure that everyone in the vehicle has their seatbelts fastened.
- >Ensure that the seat is always secured when it is in the vehicle, even if no child is being transported.

### **Risk of injury from unsecured child**

If the child causes the vehicle seat belt lock to open, in the event of an emergency stop or an accident there is a risk of serious or even fatal injuries.

- >Stop the vehicle safely as soon as this is possible.
- >Ensure that the child seat is correctly fastened.
- >Ensure that the child is buckled up correctly.
- >Explain the consequences and dangers to the child.

### **Never use child seat without seat cover**

The seat cover is an integral safety component of the seat. If the seat cover is not used, this may lead to serious or even fatal injuries.

- >Only use original LONGMA replacement seat covers.
- >Replacement seat covers are available from your retailer.



## WARNING!

This operating manual and the separate components of the product and contribute to its safe use. Noncompliance may lead to serious or even fatal injuries. If in doubt, do not use product and immediately contact your retailer.

### Intended use

This product has been designed, tested and certified according to the requirements of the European Standard for Child Safety Equipment UN ECE R129/03.

**Height of child:** 125 cm - 150 cm

This product is designed exclusively for securing a child in a vehicle.

This approval is invalidated if you make any modifications to this product. Changes may only be made by the manufacturer. The stickers on the product are an important component of the product.

>Do not make any changes.

>Do not remove stickers.

### Check fastening before each car journey:

The lap belt sits in the left and right dark green belt guides.

The lap belt sits as low as possible over the child's hips on both sides. The diagonal

belt sits in the dark green belt guide on the side of the seat belt lock.

The diagonal belt sits in the light green belt guide.

The diagonal belt leads diagonally to the back from the Enhanced Child Restraint System. The vehicle seat lock is neither in nor in front of the dark-green belt guide.

The seat belt is pulled tight and not twisted.

### Cleaning and care

>Clean plastic parts with soapy water.

>Do not use abrasive cleaning agents (e.g. solvents).

### Disposal

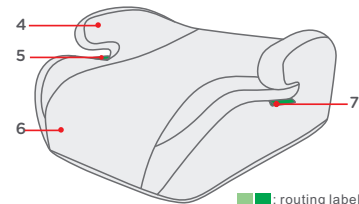
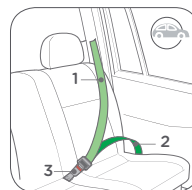
>Observe the disposal regulations in your country.

>Do not dismantle product.

## Parts List

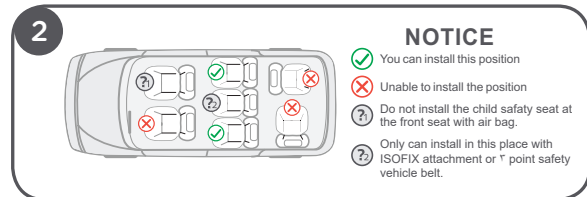
- |                   |                            |
|-------------------|----------------------------|
| 1. Diagonal belt  | 4. Armrest and cloth cover |
| 2. Lap belt       | 5. Safety belt route slot  |
| 3. Seat belt lock | 6. Seat and cloth cover    |
|                   | 7. Safety belt route slot  |

Please make sure there are no missing parts. Please contact the retailer if anything is missing.



## Concerns on Installation

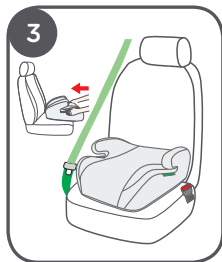
see images 1 - 2



## 3-point car seat belt installation(125-150CM)

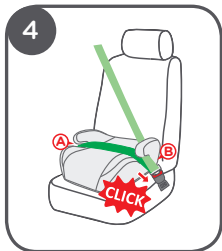
see images 3- 5

1: Place the baby car seat on the vehicle's seat and pull out the 3-point car seat belt. 3

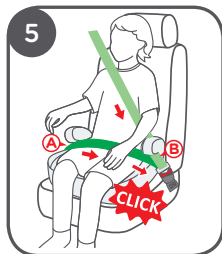


2. Follow the routine to install the enhanced child restraint system 4

! Secure empty child seat before each journey



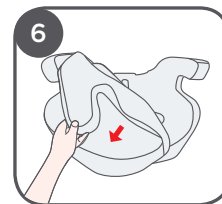
3. Put the child into the safety car seat and then pull car seat belt follow the belt route and lock 5



## Remove the cover

see images 6

Take off the fabric cover.



## Care and Maintenance

- ! In daily use, check periodically the child seat. The child seat should be replaced after an accident.
- ! Please keep this child seat in a dry and ventilated place to avoid dampness and mold.
- ! If the child seat becomes dusty, clean the plastic pieces by swiping them with a damp sponge and let it dry naturally.
- ! For cleaning the entire child seat fabric cover, please refer to the washing instruction.

### Washing instruction

Never use any solvent, chemical detergent or lubricant on any part of your child seat.

