

For product support please call:
1300 369 193

BM2700

Full Colour Video &
Audio Monitor



vtech®

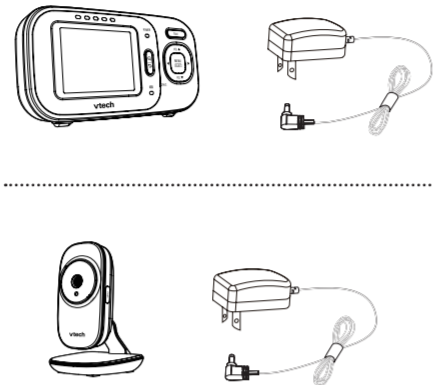
User's manual

Congratulations

on purchasing your new VTech product. Before using this product, please read **Important safety instructions**.

This manual has all the feature operations and troubleshooting necessary to install and operate your new VTech product. Please review this manual thoroughly to ensure proper installation and operation of this innovative and feature rich VTech product.

What's in the box



Important safety instructions

When using your equipment, basic safety precautions should always be followed to reduce the risk of fire, electric shock and injury, including the following:

- Follow all warnings and instructions marked on the product.
- Adult setup is required.
- This product is intended as an aid. It is not a substitute for responsible and proper adult supervision and should not be used as such.
- This product is not intended for use as a medical monitor.
- Do not use this product near water. For example, do not use it next to a bath tub, wash bowl, kitchen sink, laundry tub or swimming pool, or in a wet basement or shower.
- CAUTION:** Use only the batteries provided. There may be a risk of explosion if a wrong type of battery is used for the parent unit. Do not dispose of batteries in a fire. They may explode.
- Use only the adapters included with this product. Incorrect adapter polarity or voltage can seriously damage the product.
Baby unit power adapter: Output: 6V DC 400mA
Parent unit power adapter: Output: 6V DC 400mA.
- The power adapters are intended to be correctly oriented in a vertical or floor mount position. The prongs are not designed to hold the plug in place if it is plugged into a ceiling, under-the-table or cabinet outlet.
- For pluggable equipment, the socket-outlet shall be installed near the equipment and shall be easily accessible.
- Unplug this product from the wall outlet before cleaning. Do not use liquid or aerosol cleaners. Use a damp cloth for cleaning.
- Unplug the power cords before replacing batteries.
- Do not cut off the power adapters to replace them with other plugs, as this causes a hazardous situation.
- Do not allow anything to rest on the power cords. Do not install this product where the cords may be walked on or crimped.
- This product should be operated only from the type of power source indicated on the marking label. If you are not sure of the type of power supply in your home, consult your dealer or local power company.
- Do not overload wall outlets or use an extension cord.
- Do not place this product on an unstable table, shelf, stand or other unstable surfaces.
- This product should not be placed in any area where proper ventilation is not provided. Slots and openings in the back or bottom of this product are provided for ventilation. To protect them from overheating, these openings must not be blocked by placing the product on a soft surface such as a bed, sofa or rug. This product should never be placed near or over a radiator or heat register.
- Never push objects of any kind into this product through the slots because they may touch

dangerous voltage points or create a short circuit. Never spill liquid of any kind on the product.

- To reduce the risk of electric shock, do not disassemble this product, but take it to an authorized service facility. Opening or removing parts of the product other than specified access doors may expose you to dangerous voltages or other risks. Incorrect reassembling can cause electric shock when the product is subsequently used.
- You should test the sound reception every time you turn on the units or move one of the components.
- Periodically examine all components for damage.
- Be aware of possible loss of privacy while using public airwaves. Conversations may be picked up by other nursery monitors, cordless phones, scanners, etc.
- Children should be supervised to ensure that they do not play with the product.
- The product is not intended for use by persons (including children) with reduced physical, sensory or mental capabilities, or lack of experience and knowledge, unless they have been given supervision or instruction concerning use of the appliance by a person responsible for their safety.

SAVE THESE INSTRUCTIONS

Cautions

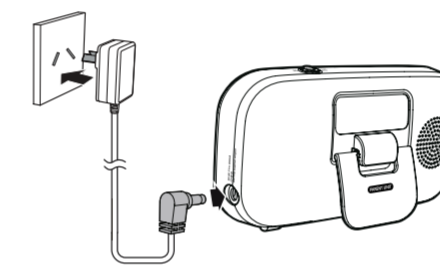
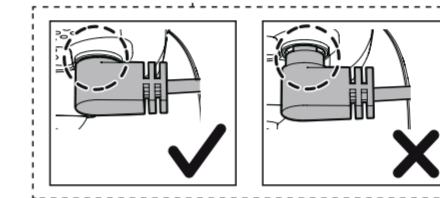
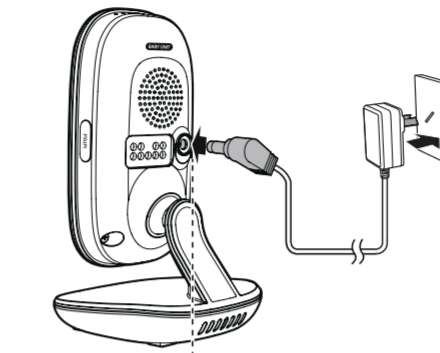
- Use and store the product at a temperature between 0°C and 40°C.
- Do not expose the product to extreme cold, heat or direct sunlight. Do not put the product close to a heating source.
- Batteries should not be exposed to excessive heat such as bright sunshine or fire.
- Warning—Strangulation Hazard—Children have STRANGLED in cords.** Keep this cord out of the reach of children (more than 1 metre away).
- Never place the baby unit inside the baby's cot or playpen. Never cover the baby unit or parent unit with anything such as a towel or a blanket.
- Other electronic products may cause interference with your baby monitor. Try installing your baby monitor as far away from these electronic devices as possible: wireless routers, radios, cellular telephones, intercoms, room monitors, televisions, personal computers, kitchen appliances and cordless telephones.

Connect and charge the battery

NOTES

- The rechargeable battery is pre-installed in your parent unit.
- Use only the power adapters supplied with this product.
- Make sure the electrical outlets are not controlled by wall switches.
- The power adapters are intended to be correctly oriented in a vertical or floor mount position. The prongs are not designed to hold the plug in place if they are plugged into a ceiling, under-the-table or cabinet outlet.
- Make sure the parent unit, the baby unit and the power adapter cords are out of reach of children.

Connect the baby monitor



Charge the parent unit battery

When you have connected and turned on the parent unit, the battery will be charged automatically. The battery icon indicates the battery status (see the following table).

NOTES

- The parent unit battery is fully charged after 11 hours of continuous charging.
- It takes longer to charge the battery when the parent unit is turned on. To shorten the charging time, turn the parent unit off while charging.
- The standby time varies depending on the volume level you set and your actual use.

Battery indicators	Battery status	Action
The screen displays Battery low at Parent Unit . The or light flashes.	The battery has very little charge and may be used for only a short time.	Charge without interruption (about 30 minutes).
The battery icon becomes solid .	The battery is fully charged.	To keep the battery charged, connect it to AC power when not in use.

Before use

NOTE

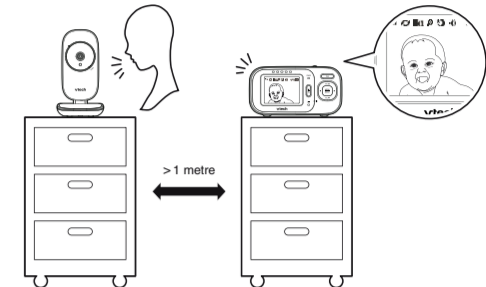
- This baby monitor is intended as an aid. It is not a substitute for proper adult supervision, and should not be used as such.

Test your baby monitor

You may test the baby monitor before initial use, and at regular times thereafter.

CAUTION

- For hearing protection, make sure the parent unit is more than 1 metre away from the baby unit. If you hear any high-pitched noise, move the parent unit further until the noise stops. You can also press **VOL+** on the parent unit to lower or mute the noise.



- Make sure your baby unit and parent unit are on.
- The parent unit displays images from the baby unit.
 - Speak towards the microphone of the baby unit. You will hear the sound at the parent unit.

NOTE

- When the parent unit displays **No link to Camera**, and the **POWER LED** light flashes, move the parent unit closer to the baby units (observe the minimum distance of 1 metre). You can also check if the baby unit is connected to a live power socket and switched on.

TIP

- Increase the speaker volume of the parent unit if you cannot hear the sounds transmitted from the baby units.

Positioning the baby monitor

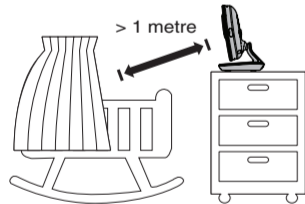
CAUTION

- Keep the baby unit out of the reach of your baby. Never place or mount the baby unit inside the baby's cot or playpen.

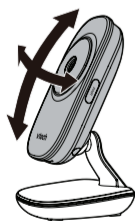
NOTE

- To avoid interference from other electronic devices, place your baby monitor far away from devices such as wireless routers, microwaves, cell phones and computers.

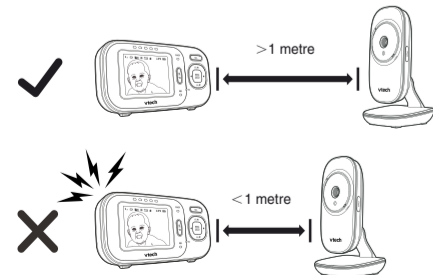
- Place the baby unit more than 1 metre away from your baby.



- Adjust the angle of the baby unit camera to aim at your baby.



- Place the parent unit more than 1 metre away from the baby unit.



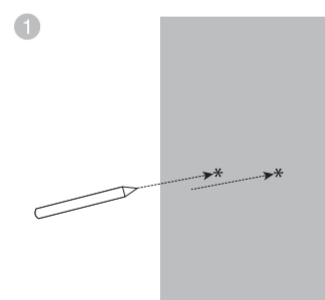
CAUTION

- The default volume of your parent unit is level 3, and the maximum volume is level 5. If you experience high-pitched screeching noise from your baby monitor while positioning:
 - Make sure your baby unit and parent unit are more than 1 metre apart, OR
 - Turn down the volume of your parent unit.

Mount the baby monitor (optional)

You will need to purchase the following items separately to mount your baby unit:

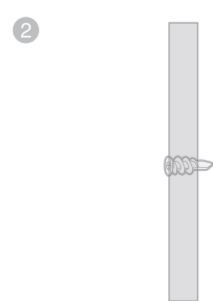
- 2 screws
- 2 anchors



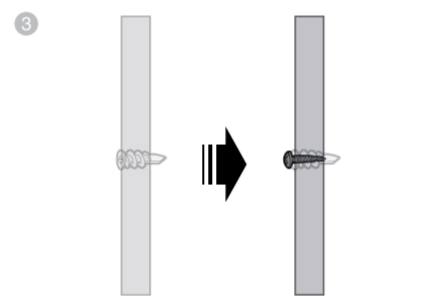
NOTE

- Check for reception strength and camera angle before drilling the holes.

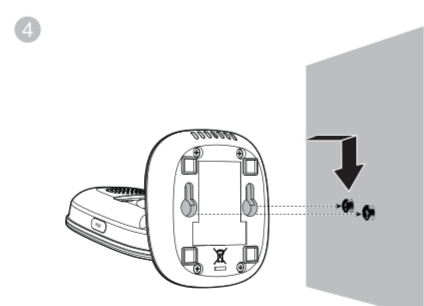
Use a pencil to mark two holes in parallel. Make sure they are the same distance apart as the wall mount holes on the baby unit.



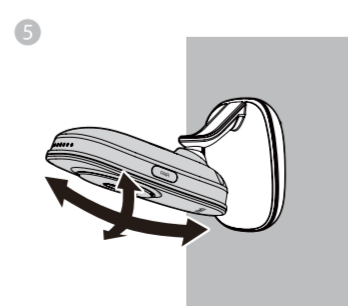
Drill two holes in the wall. If you drill the holes into a stud, go to step 3. -OR- If you drill the holes into an object other than a stud, insert the wall anchors into the holes. Tap gently on the ends with a hammer until the wall anchors are flush with the wall.



Insert the screws into the holes and tighten the screws until only 1/4 inch of the screws are exposed.



Align the wall mount holes on the baby unit with the screws on the wall. Slide the baby unit down until it locks into place.



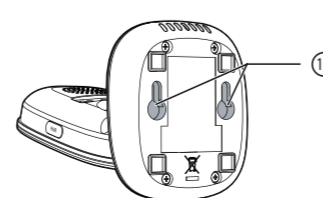
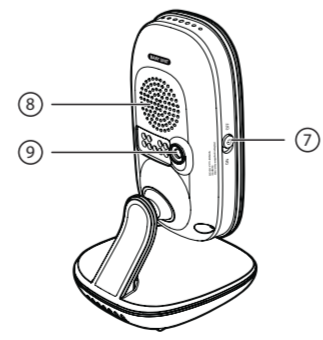
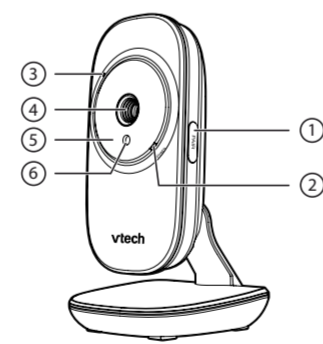
Adjust the camera angle.

Operating range

The operating range of the baby monitor is up to 300 metres outdoors or 50 metres indoors. The actual operating range may vary depending on the environmental conditions and other interferences such as walls, doors and other obstructions.

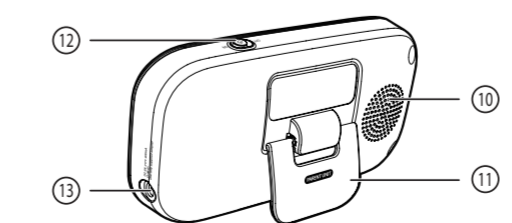
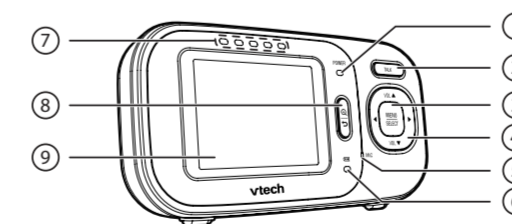
Overview

Baby unit overview



1	PAIR button • Your baby unit and parent unit provided are already paired.
2	POWER LED light • On when the baby unit is turned on and is paired to the parent unit. • Flashes when the baby unit is not being viewed; or when the link to the parent unit is lost.
3	Microphone
4	Camera
5	Infrared LEDs
6	Light sensor
7	ON/OFF switch • Slide to turn on or off the baby unit.
8	Speaker
9	Power jack
10	Wall mount holes

Parent unit overview



1	POWER LED light • Green when the parent is powered on. • Flashes green when no link to camera.
2	TALK • Press and hold to talk to the baby unit.
3	MENU/SELECT • Press to enter the menu. • While in a menu, press to choose an item, or save a setting.
4	Arrow keys and VOL+ / VOL- / VOL VOL+ / ▲ • Press to increase the parent unit speaker volume. • While in a menu, press to scroll up, or to enter an item's sub-menu. • While zooming, press and hold to move the zoomed image upward. VOL- / ▼ • Press to decrease the parent unit speaker volume. • While in a submenu, press to scroll down. • While zooming, press and hold to move the zoomed image downward. • While in a menu, press to choose the next item on the left. • While zooming, press and hold to move the zoomed image leftward. • While in a menu, press to choose the next item on the right. • While zooming, press and hold to move the zoomed image rightward.
5	Microphone
6	Battery indicator • Red when battery is charging. • Flashes red when battery is low.

7	Visual sound indicators The visual sound indicators can show the sound level detected by the baby unit. Sound level detected by the baby unit • One to three green lights indicate a moderate or low signal strength is detected between the baby unit and the parent unit. • Additional red lights indicate a higher sound level detected by the baby unit (e.g. baby crying loudly).
8	Zoom / Back • Press to zoom in or out. • Press to return to the previous screen.
9	LCD display
10	Speaker
11	Stand
12	ON/OFF switch • Slide to turn on or off the parent unit.
13	Power jack

Parent unit status icons

	Connection status • displays when strong signal strength is detected between the baby unit and the parent unit. • or displays when moderate or low signal strength is detected between the baby unit and the parent unit. • displays when the link between the baby unit and the parent unit is lost.
	Current view status • Displays camera when baby unit successfully linked to parent unit.
	Zoom • Displays when the current image on the parent unit has zoomed in.
	Night vision • Displays when the baby unit being viewed has activated the night vision feature.
	Mute alert • Displays when the parent unit speaker volume is set to off.
	Real-time temperature • Displays the real-time temperature detected by the baby unit in Fahrenheit (°F) or Celsius (°C) (e.g. 57°F or 14°C).
	Battery status • animates when the battery is charging. • displays solid when the battery is fully charged. • displays when the battery is low and needs charging.
	Speaker volume • Displays the parent unit speaker volume level while adjusting.

Parent unit main menu icons

- Brightness**
- You can change the brightness of the parent unit screen.

LCD screen off timer

- You can set a specific time to turn the screen off.

VOX sensitivity

- With this feature, you can choose to hear sounds from the baby unit all the time, or to hear sounds that exceed a certain level. You can use the parent unit to adjust the microphone sensitivity of your baby unit. The higher the sensitivity level, the more sensitive the baby unit is in detecting sounds for transmitting to the parent unit.

Sound-activated screen

- When the baby unit detects no sound, the parent unit screen stays off to save power. Once a sound is detected, the parent unit screen turns on automatically. It will then turn off again after 50 seconds of no sound detection.

Temperature

- You can turn on the temperature alert tone so that the parent unit beeps whenever the room temperature detected by the baby unit falls outside of the desired temperature range. You can choose in Fahrenheit (°F) or Celsius (°C) as the temperature format displayed, or set the maximum/minimum temperature limit for alerts.

Parent unit warning icons and messages



The selected baby unit is out of range or is turned off.



The battery is empty and needs to be recharged.



The temperature detected by the baby unit is higher/lower than the desired temperature alert range.



The parent unit is searching for baby units.



The parent unit is connected to AC power.

Using the baby monitor

Power on or off the baby unit

- Slide the **ON/OFF** switch to **ON** to turn on the baby unit. The **POWER** LED light turns on.
- Slide the **ON/OFF** switch to **OFF** to turn off the baby unit. The **POWER** LED light turns off.

Power on or off the parent unit

- Slide the **ON/OFF** switch to **ON** to turn on the parent unit. The screen and the **POWER** LED light turns on.
- Slide the **ON/OFF** switch to **OFF** to turn off the parent unit. The screen and the **POWER** LED light turns off.

Adjust parent unit speaker volume

- Press **VOLA/VOLV** on the parent unit to adjust the speaker volume.

NOTE

- When the parent unit speaker volume is set to off, appears on the screen.

Adjust LCD brightness

You can change the brightness of the parent unit screen from **Level 1** to **Level 5**. The LCD brightness is preset to **Level 3**.

- Press when the parent unit is idle.
- Press or to choose , then press or .
- Press or to choose the desired level of brightness, then press to confirm your selection.

Screen off timer

You can set the screen off time for the parent unit when there is no key press for a specific time interval.

When the screen is turned off, you can still hear sound from the baby unit.

- Press when the parent unit is idle.
- Press or to choose , then press or .
- Press or to choose the desired time period to automatically turn off screen (**OFF** / - 5 min./ - 30 min./ - 60min.), then press to confirm your selection.

Adjust the sound sensitivity of the baby unit

You can choose to hear sounds from the baby unit all the time, or to hear sounds that exceed a certain level. You can use the parent unit to adjust the microphone sensitivity of your baby unit. The higher the sensitivity level, the more sensitive the baby unit is in detecting sounds for transmitting to the parent unit. The VOX sensitivity level is preset to the highest level (**Level 5**).

Display	Sensitivity	Description
(Level 5) ■ ■ ■ ■ ■ 	High Sensitivity	Highest VOX sensitivity level The parent unit speaker is constantly on, and you will hear all sounds (including background noises) from your baby's room.
(Level 4) ■ ■ ■ ■ 		High VOX sensitivity level The parent unit speaker turns on for soft babbling and louder sounds from your baby. It remains quiet when your baby sleeps soundly.
(Level 3) ■ ■ ■ ■ 		Medium VOX sensitivity level The parent unit speaker turns on for loud babbling and louder sounds from your baby. It remains quiet when your baby makes soft sounds.
(Level 2) ■ ■ ■ 		Low VOX sensitivity level The parent unit speaker turns on for crying and louder sounds from your baby. It remains quiet when your baby makes soft sounds.
(Level 1) ■ 	Low Sensitivity	Lowest VOX sensitivity level The parent unit speaker turns on for loud crying or screeching sounds from your baby. It remains quiet when your baby makes soft sounds.

- Press when the parent unit is idle.
- Press or to choose , then press or to open the submenu.
- Press or to choose the desired sensitivity level, then press to confirm your selection.

NOTE

- If the screen is off, and the setting of sound-activated screen is **ON**, then LCD screen will be turned on automatically when VOX sensitivity is triggered.

Turn on or off the sound activation

When sound activation is on, as long as no sound is detected within 50 seconds, the parent unit screen will turn off automatically to save power.

When your baby unit detects a sound, which exceeds the selected sensitivity level, the sound activation triggers the parent unit screen to turn on automatically. When no sound is detected within 50 seconds, the screen will be off again.

- Press when the parent unit is idle.
- Press or to choose , then press or to open the submenu.
- Press or to choose **DN** or **OFF**, then press to confirm your selection.

NOTE

- If the sound sensitivity is set to the highest level, the parent unit screen may remain on continuously even though sound activation is on. This depends on whether the baby unit detects any sounds

Zoom

You can zoom in while viewing images from the baby unit.

- Press to zoom in.
- Press or to move the zoomed image downward or upward.
- Press or to move the zoomed image leftward or rightward.
- Press again to zoom out.

Talk

You can use the **TALK** function of the parent unit to comfort your baby.

Press and hold TALK on the parent unit.

- Speak towards the microphone on the parent unit. Your voice is broadcast to the baby unit.
- Release the **TALK** key to stop the broadcast.

Monitor the temperature

Your baby unit monitors the temperature of your baby's room with its built-in temperature sensor. If the detected temperature is out of the preset temperature range, the parent unit will display an alert message.

Set temperature range

You can set the desired minimum and maximum room temperature alert ranges.

- Press when the parent unit is idle.
- Press or to choose , then press .
- Press or to choose , then press or to open the submenu.
- Press or to choose **MIN** or **MAX**, then press .
- Press or to choose the desired minimum or maximum temperature, then press to confirm your selection.

Temperature alert tone

You can turn on the temperature alert tone so that the parent unit will emit an alert tone if the detected temperature is out of range.

- Press when the parent unit is idle.
- Press or to choose , then press .
- Press or to choose , then press or to open the submenu.
- Press or to choose **DN** or **OFF**, then press to confirm your selection.

Temperature format

You can choose to display the temperature in Fahrenheit (°F) or Celsius (°C).

- Press when the parent unit is idle.
- Press or to choose , then press .
- Press or to choose , then press or to open the submenu.
- Press or to choose **F** or **C**, then press to confirm your selection.

Night vision

The baby unit has infrared LEDs that allow you to see your baby clearly at night or in a dark room. When the baby unit being viewed detects low light levels, the infrared LEDs are switched on automatically. The images from the baby unit are in black and white, and appears on the screen.

NOTES

- It is normal if you see a short white glare on your parent unit screen as the baby unit is adapting to the dark environment.
- When the infrared LEDs are on, the images are in black and white. This is normal.

TIP

- Depending on the surroundings and other interfering factors, like lightings, objects, colours and backgrounds, the display resolution may vary. Adjust the baby unit's angle or place the baby unit at a higher level to prevent glare and blurry display.

General product care

To keep this product working well and looking good, follow these guidelines:

- Avoid putting it near heating appliances and devices that generate electrical noise (for example, motors or fluorescent lamps).
- DO NOT expose it to direct sunlight or moisture.
- Avoid dropping the product or treating it roughly.
- Clean with a soft cloth.
- DO NOT immerse the parent unit and the baby unit in water and do not clean them under the tap.
- DO NOT use cleaning spray or liquid cleaners.
- Make sure the baby unit and parent unit are dry before you connect them to the mains again.

Storage

When you are not going to use the baby monitor for some time, store the parent unit, the baby unit and the adapters in a cool and dry place.

Frequently asked questions

Below are the questions most frequently asked about the soother. If you cannot find the answer to your question, please contact Tech-Help on 1300 369 193.

Why does the baby monitor not respond normally?	Try the following (in the order listed) for common cure: 1. Disconnect the power to the baby unit and the parent unit. 2. Wait a few seconds before connecting power back to the baby unit and the parent unit. 3. Turn on the baby unit and the parent unit. 4. Wait for the parent unit to synchronize with the baby unit. Allow up to one minute for this to take place.
Why don't the power-on light of the baby unit and parent unit go on when I switch on the units?	Perhaps the parent unit is not connected to the power. Insert the appliance plug into the parent unit and put the adapter in a wall socket. Then, slide the ON/OFF switch to ON to switch on the parent unit and to establish connection with the baby unit. Perhaps the baby unit is not connected to the power. Insert the appliance plug into the baby unit and put the adapter in a wall socket. Then, slide the ON/OFF switch to ON to switch on the baby unit and to establish connection with the parent unit.
Why doesn't my parent unit charge while connected to AC power?	Make sure the power is not controlled by a wall switch.
Why is my screen in black and white?	The screen is in black and white during night-time or in a dark room when the night vision feature is activated. This is normal.
Why do I get glare or blurry display on my screen when viewing my baby at night?	During night-time or in a dark room, the surroundings and other interfering factors, like lightings, objects, colours and backgrounds may affect the image quality on your parent unit screen. Adjust the baby unit's angle or place the baby unit at a higher level to prevent glare and blurry display.

Why does the baby monitor produce a high-pitched noise?	The parent unit and baby unit may be too close to each other. <ul style="list-style-type: none">Move the parent unit away from the baby unit until the noise stops; ORTurn down the volume of your parent unit.
Why does the parent unit beep?	The baby unit may be out of range. Move the parent unit closer to the baby unit (but not less than 1 metre). The parent unit may not have enough charge for the parent unit to perform normally. Charge the battery in the parent unit for up to 11 hours. The temperature of your baby's room may be too high or too low.
Why don't I hear a sound/ Why can't I hear my baby cry?	The parent unit speaker volume may be too low or off. Press VOLA to increase the volume, or use the parent unit menu to change sound sensitivity level to the highest level (level 5).
Why can't I establish a connection? Why is the connection lost every now and then? Why are there sound interruptions?	The baby unit may be out of range. Move the parent unit closer to the baby unit (but not less than 1 metre). Other electronic products may cause interference with your baby monitor. Try installing your baby monitor as far away from these electronic devices as possible.

Customer service and product warranty

IMPORTANT

Please retain this booklet with your sales receipt as proof of the date of purchase.

Customer Service

If you require assistance in operating this product, please call the TechHelp Information Line on 1300 369 193 or contact VTech by e-mail at: tcpsupport_au@vtech.com.

Voluntary Product Enquiry

In addition to your Statutory Rights and subject to the conditions below, VTech warrants that this product will be free from any defect in materials or workmanship under conditions of normal use for a period of 24 months from date of purchase.

VTech does not warrant that the product will be free from defects if defects are caused by an accident, misuse, abuse, improper installation or operation, vermin infestations, lack of reasonable care, unauthorised modification, loss of parts, tampering or attempted repair by a person not authorised by VTech; or where the product has been damaged by lightning or a mains power surge.To make a claim under this Voluntary Product Warranty you must call the TechHelp Information Line on 1300 369 193 or contact VTech by e-mail at: tcpsupport_au@vtech.com where a Customer Service Representative will inform you of the product return process. You will need to ensure that:

- You provide proof of purchase;
- Your product is suitably packaged (original packaging is not required); and
- You have included all components from the original purchase.

For your records

Date of purchase:

Place of purchase:

Serial number:

For Voluntary Product Warranty purposes, proof of purchase is required so please keep your receipt.

The benefits conferred by this Voluntary Product Warranty are in addition to other rights and remedies that are available to you under law, which cannot be excluded. The processes for this Voluntary Product Warranty in no way limit your rights which arise as a result of your Statutory Rights.

Technical specifications

Frequency control	Crystal controlled PLL synthesizer
Transmit frequency	Baby unit: 2402 - 2478.5 MHz Parent unit: 2402 - 2478.5 MHz
Channels	52
LCD	2.4" Colour LCD (QVGA 320x240 pixel)
Nominal effective range	Actual operating range may vary according to environmental conditions at the time of use.
Power requirements	Parent unit: 3.6V Ni-MH battery Baby unit power adapter: Output: 6V DC @ 400mA Parent unit power adapter: Output: 6V DC @ 400mA

Disposal of batteries and product



The crossed-out wheelie bin symbols on products and batteries, or on their respective packaging, indicates they must not be disposed of in domestic waste as they contain substances that can be damaging to the environment and human health.



The chemical symbols Hg, Cd or Pb, where marked, indicate that the battery contains more than the specified value of mercury (Hg), cadmium (Cd) or lead (Pb) set out in Battery Directive (2006/66/EC).



The solid bar indicates that the product was placed on the market after 13th August, 2005.

Help protect the environment by disposing of your product or batteries responsibly.

