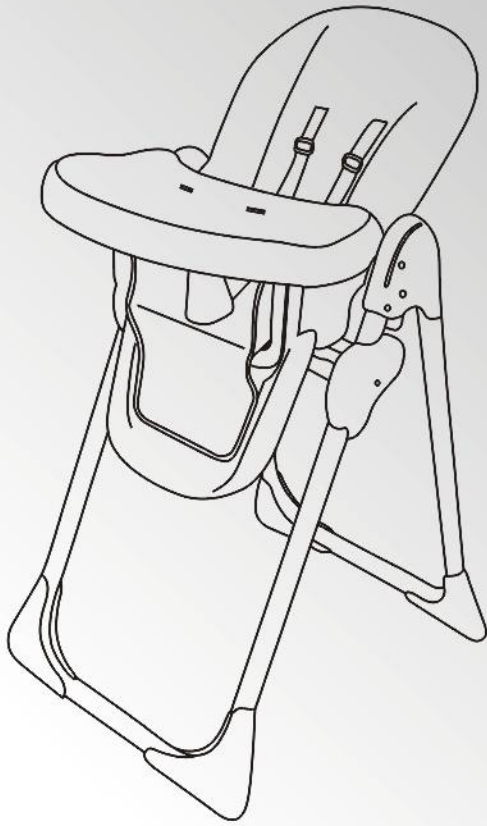




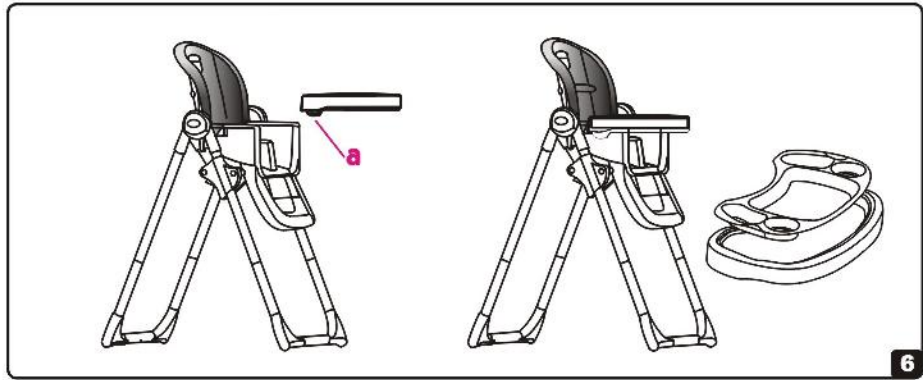
## HI LO Highchair Instructions



IMPORTANT! Please keep for future reference.

### BABY HIGH CHAIR

#### How To Assemble Highchair



#### 6 fitting the tray

Position the tray over the arms and pull outward on the side levers (a) found on the underside of the tray, whilst sliding the tray to the position required. The tray has three positions only as indicated on the arm rests, line the tray with the desired position, release the levers to lock position. In the case the tray is not automatically locked onto the armrests, move the tray slightly until a double click is heard signalling the tray is securely locked.

**WARNING:** Never leave the tray fitted in a position in which the warning signs are visible.

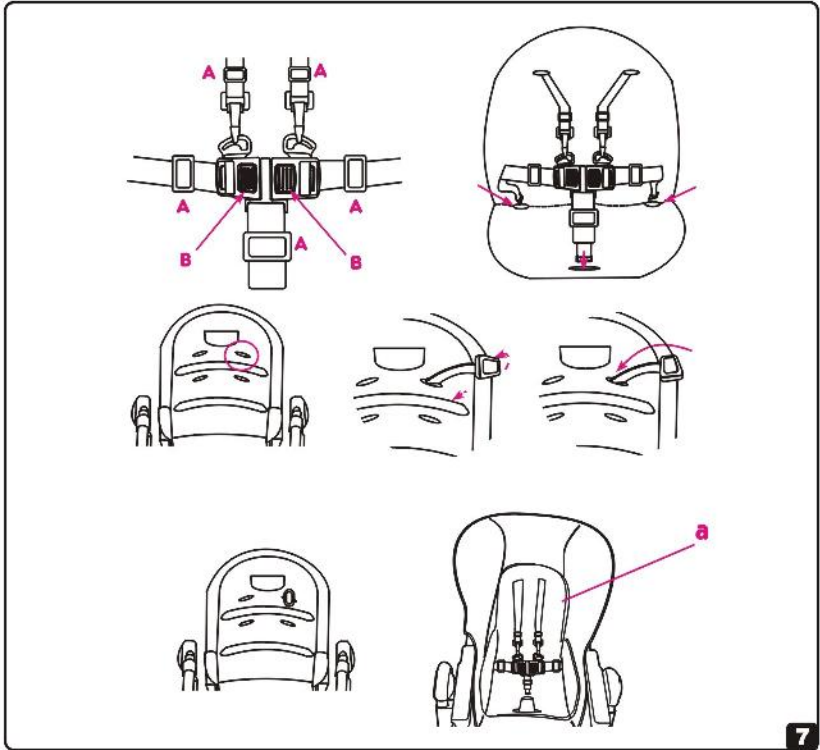
The top tray can be removed by 1.holding and pulling at the ridge , at the same time as 2.lifting the other ridge and remove.

To replace again, position the top tray over the bottom tray and push down to secure.

The tray maybe stored on the back legs of the highchair. Align the holes in the rear of the tray with the small pegs on the back legs.

### BABY HIGH CHAIR

#### How To Assemble Highchair



#### 7 harness

A five-point safety harness is provided to restrain your child and should always be worn.

Sliding adjusters are fitted and should be carefully adjusted so the harness fits your child comfortably.

To fasten the harness push the prongs into the buckle.

To release, push the prongs (B) and remove from the buckle.

The seat cover should come already positioned on the highchair; however it may be necessary to remove these components for cleaning purposes. To remove the seat insert, undo the harness and thread the shoulder and crotch straps through the seat insert slots and simply remove.

To reapply the harness, pass the ends of the shoulder, waist and crotch straps through the vertical slots in the lower backrest, rotate the ends and pull back to secure.

#### IMPORTANT: SAFETY NOTE

The seat cover may be sponge cleaned only. If you feel the need to remove the seat cover, for ease of cleaning, please ensure that you carefully follow the instructions outlined in part 5 on how to correctly re-thread the safety harness.

### BABY HIGH CHAIR

#### IMPORTANT: KEEP FOR FUTURE REFERENCE

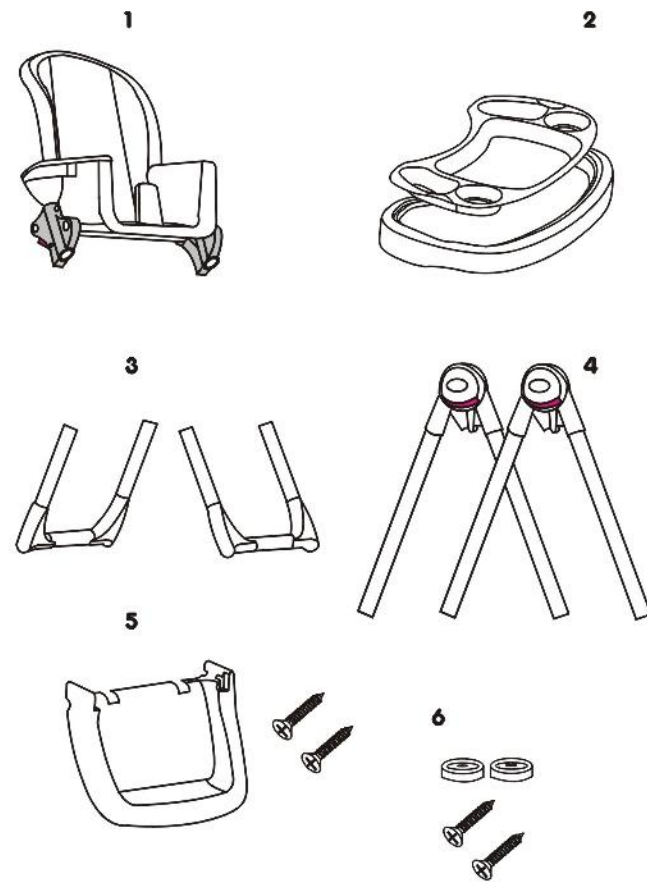
##### SAFETY: TAKE NOTE

THANK YOU FOR CHOOSING OUR PRODUCT. PLEASE TAKE A LITTLE TIME TO READ THE IMPORTANT SAFETY NOTES DETAILED BELOW. THIS WILL ENSURE MANY YEARS OF HAPPY AND SAFE USE.

- **WARNING:** FOLLOW THE MANUFACTURER'S INSTRUCTIONS.
- **WARNING:** Do not use if any part is broken, torn or missing.
- **WARNING:** Do not use the highchair until the child can sit up unaided.
- **WARNING:** Do not use the highchair unless all components are correctly fitted and adjusted.
- **WARNING:** Do not leave your child unattended, even for the shortest time.
- **WARNING:** To prevent serious injury or death from falls or sliding out, ensure the harness is correctly fitted and that the child is secure in the restraint.
- **WARNING:** Avoid placing the chair near naked heat sources such as electric bar fires, gas fires, etc. or where a child could gain access to any other kind of hazard.
- Ensure all users are familiar with the products operation. It should always open and fold easily.If it does not, do not force the mechanism - stop and read the instructions.
- Only use on a flat stable surface.
- Ensure your highchair is fully erected before placing your child inside.
- Ensure children are clear of all moving parts before making any adjustments. Do not move the highchair with your child inside.
- Do not allow your child to climb unassisted into, play with or hang onto your highchair. This is not a toy.
- All additional hazards such as electrical flex should be kept out of reach of the child in the highchair.
- Conforms to AS 4684-2009 and BS EN 14988-1&2: 2006
- THE HARNESS MUST ALWAYS BE USED AND CORRECTLY FITTED-MOST INJURIES FROM HIGH CHAIRS ARE CAUSED BY FALLS.
- POSITION THE HIGH CHAIR AWAY FROM SOLID STRUCTURES AND BENCHES TO AVOID INJURIES CAUSED BY FALLS AND BY ACCESS TO DANGEROUS ITEMS.
- Use the high chair on a flat, even and horizontal floor and not to elevate the high chair on any structure or table.
- To reduce the risk of injury, position the high chair away from furniture, walls, hot surfaces and liquids, window covering cords, and electrical cords and position the high chair away from furniture when the chair is not being used at a table with a tray removed.
- Not to be used by children over 15kgs due to its construction, strength and design.
- Do not use the high chair if it is not working correctly. Regularly check all parts for wear & tear.

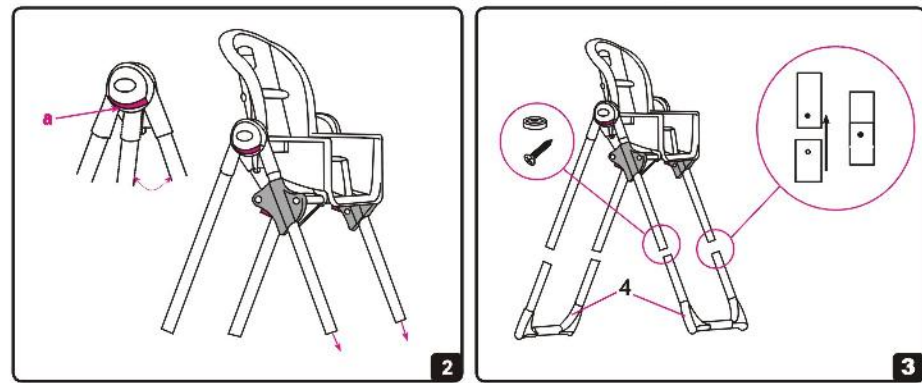
### 1 parts list

- Please retain all packaging until you are certain no parts are missing. After assembly, please dispose of all packaging carefully, including the caps on the ends of the legs
1. Seat Unit
  2. Two part serving tray
  3. Front and Rear feet
  4. Left and Right legs
  5. Foot rest with securing screws (long)
  6. Stop washer and screw (short) x 2
  7. Seat cover (not shown)



### BABY HIGH CHAIR

#### How To Assemble Highchair



#### 2 assembly

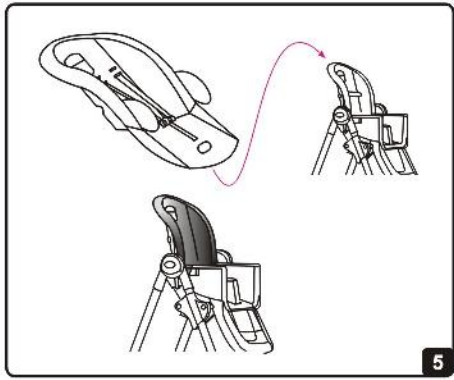
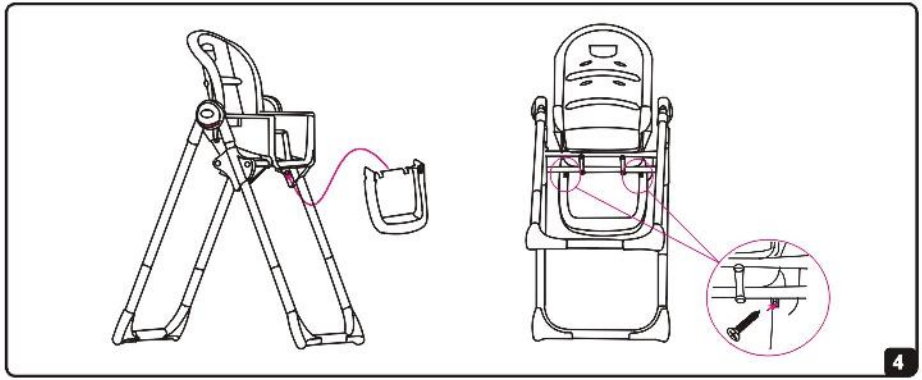
Take either the left or right leg (4), press and hold the button (a) and extend the leg, then release the button.  
Take the other leg and follow the above procedure  
Take the legs and noting the orientation in the diagram insert the legs into the top of the seat unit adjusting brackets.  
To lift the seat unit to the top of the legs simply press and hold the buttons on the seat unit adjustment brackets and lift. There are six positions bottom being "6" and top being "1". The seat position should be located in position 1 shown on the front of the seat adjustment bracket on both legs before continuing.

#### 3 fixing the feet

Please note that each of the four legs has a sprung loaded pin.  
Line up one of the feet so that the small hole in the top of the foot lines up with the pin.  
Push firmly on the foot at either end until each of the two sprung pins click into place within the small hole in the foot. Repeat for other foot.  
Take one stop washer and insert the short screw, then insert it into the bottom hole at the rear of the front left leg and repeat the process on the right leg

### BABY HIGH CHAIR

#### How To Assemble Highchair



#### 4 attaching the foot rest

Insert the footrest underneath the seat unit as shown.  
Secure using the screws provided. Insert the screws from the rear as shown.

#### 5 fitting the seat cover

Slide the pocket of the seat cover back over the curved back frame.  
Secure the seat sides by wrapping them around the frame and fasten the white clips at each side of the seat.

### CARE AND MAINTENANCE

- Ensure all locking devices work correctly and regularly check the locks and fittings for security.
- Regularly check all parts for wear and tear.
- Do not use spray lubricants, simply wipe clean after use.

### CLEANING

- The highchair can be cleaned by sponging with warm soapy water and a mild detergent. A mild disinfectant may be used if desired.
- Stubborn marks may be removed with a non abrasive cream cleaner. Never clean with abrasive, ammonia based, bleach based or spirit type cleaners.

Supplied by:  
Babyfactory Nz Ltd  
58 stonedon Drive  
East Tamaki, Auckland, NZ  
www.babyfactory.co.nz  
Babyco Australia  
www.babyco.com.au