



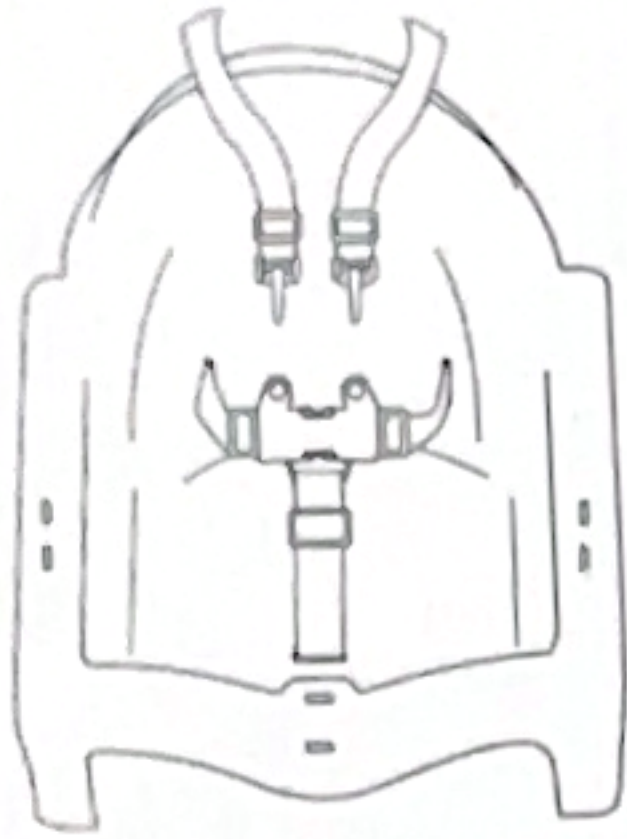





Evolutuve 2-in-1 Highchair

Instruction Manual



IMPORTANT:
READ CAREFULLY AND
KEEP FOR FUTURE REFERENCE

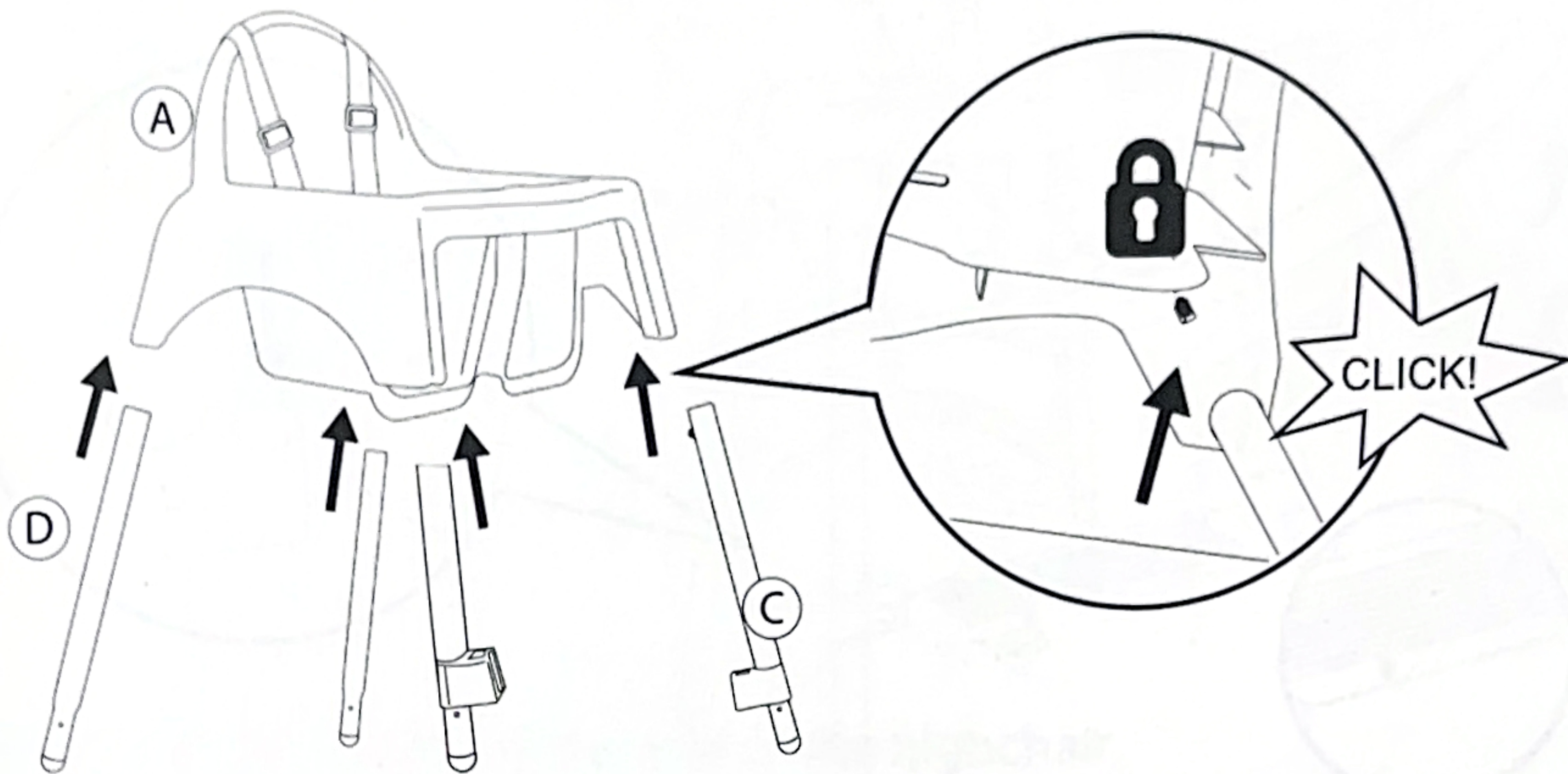
Parts List

<div>A</div> <div></div> <div>seat unit x1</div>	<div>B</div> <div></div> <div>main and upper tray x1</div>	<div>C</div> <div></div> <div>front upper legs x2</div>
<div>D</div> <div></div> <div>rear upper legs x2</div>	<div>E</div> <div></div> <div>lower legs x4</div>	<div>F</div> <div></div> <div>footrest x1</div>

Assembly

1. Located on the top of each upper leg is a metal spring pin. Press in this pin and insert upper legs (C), (D) into the allocated holes located underneath the seat unit (A). The pin will appear through the seat unit corresponding hole when locked into position.

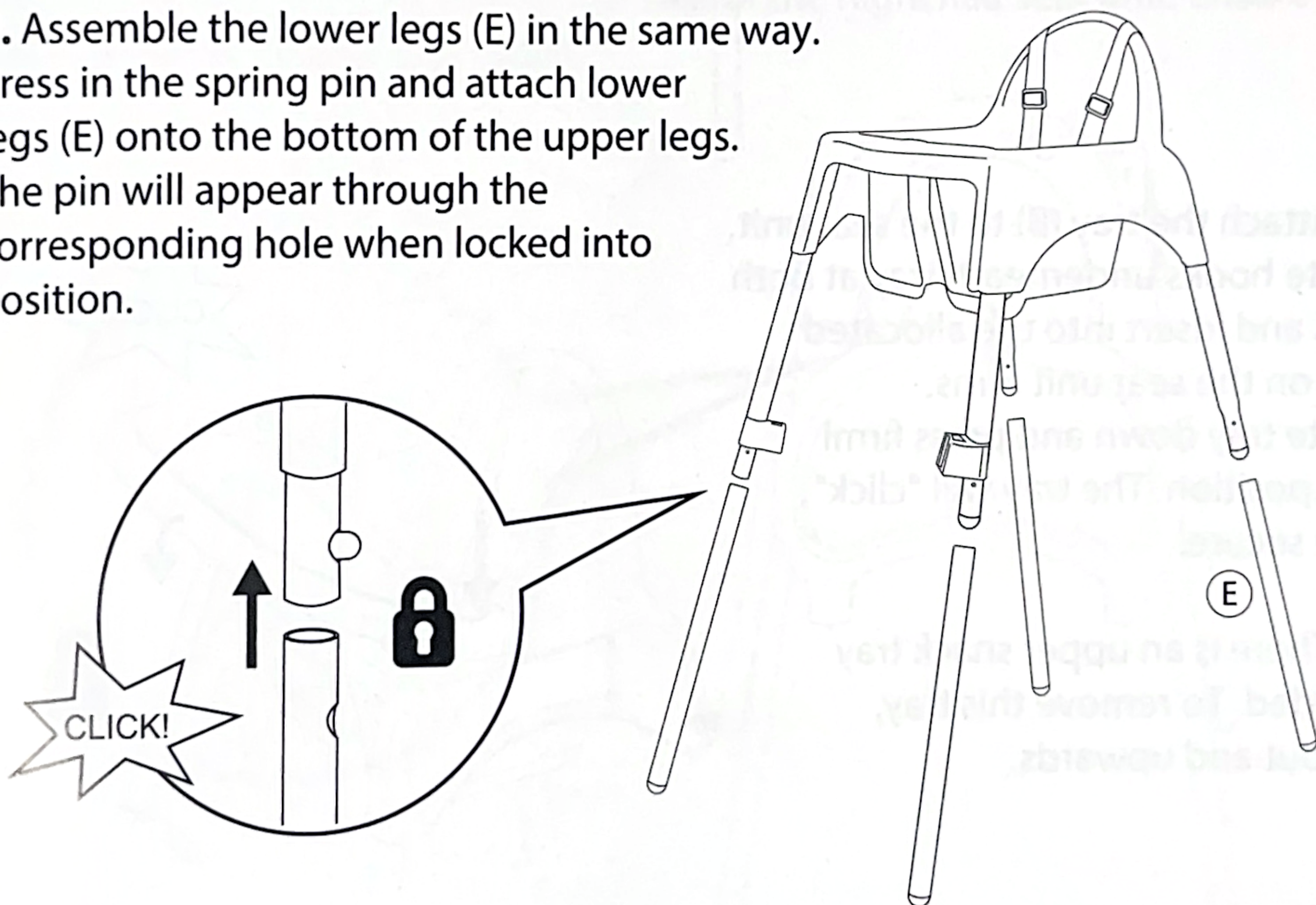
Note. ensure the front upper legs (C) are assembled to the front of the seat unit.



2. Assemble the lower legs (E) in the same way.

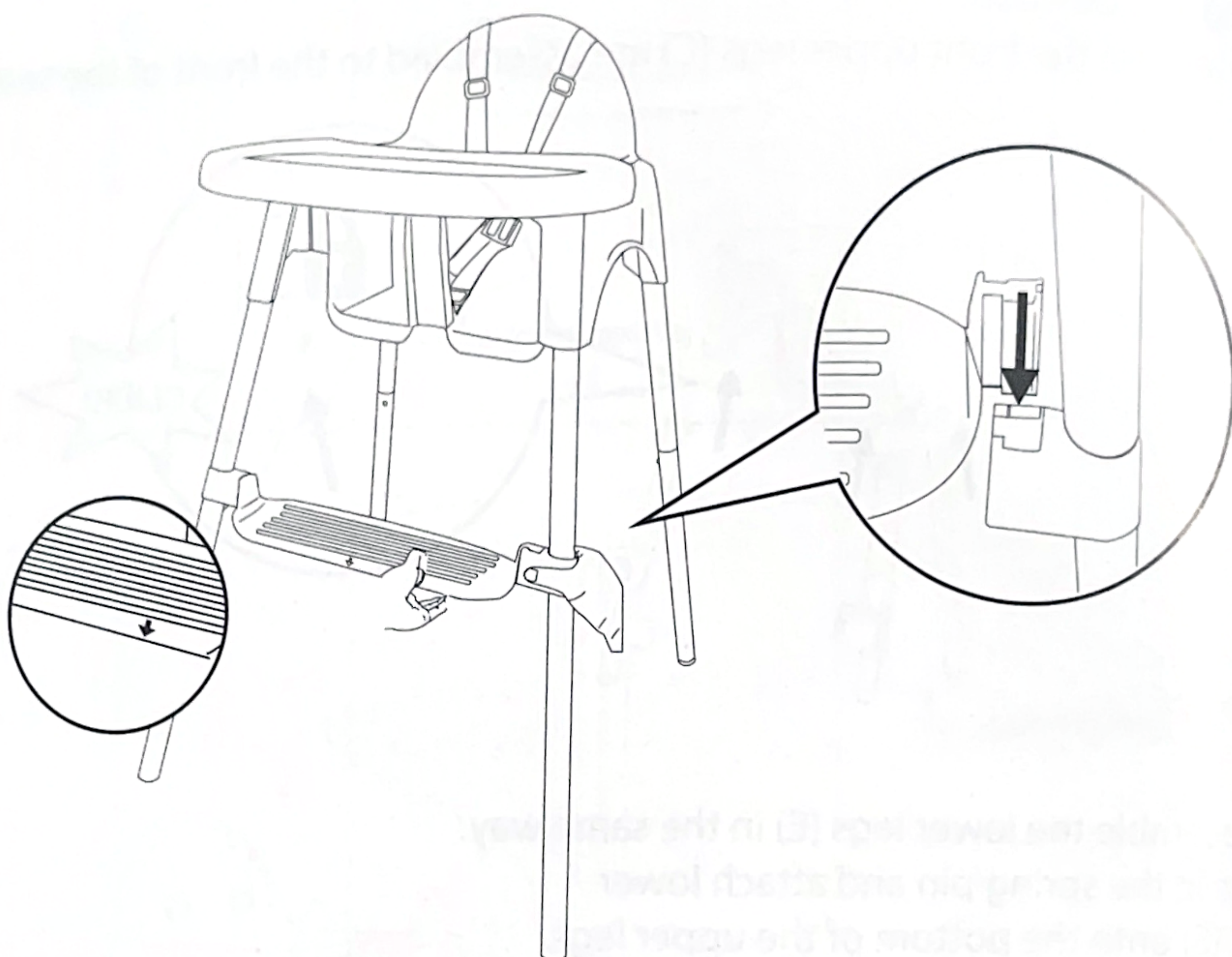
Press in the spring pin and attach lower legs (E) onto the bottom of the upper legs.

The pin will appear through the corresponding hole when locked into position.



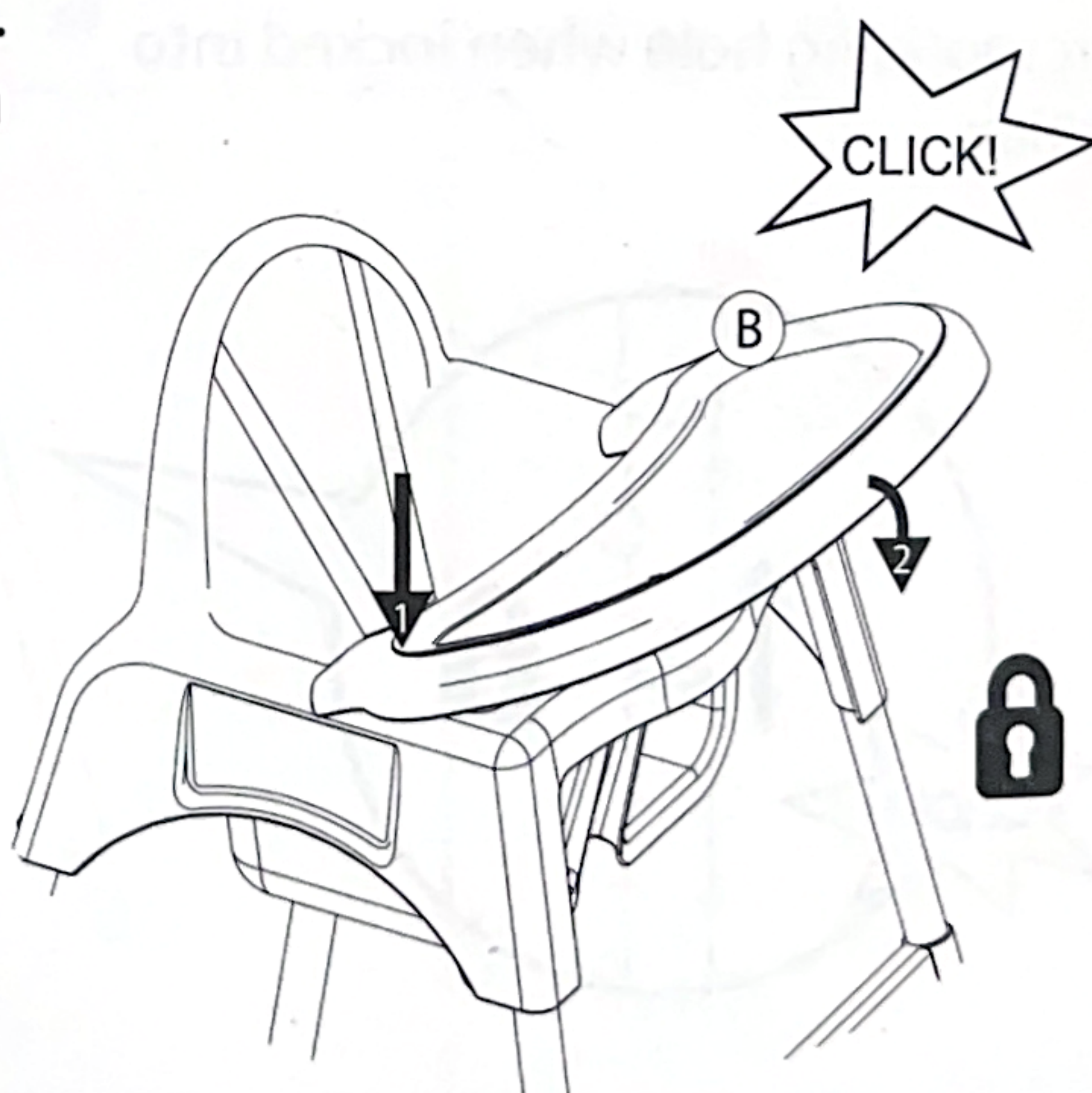
Assembly

3. Attach the footrest (F) to the front of the highchair. The arrow on the footrest indicates the front. Align the notches on the front upper legs with the footrest connection posts and push down to secure.



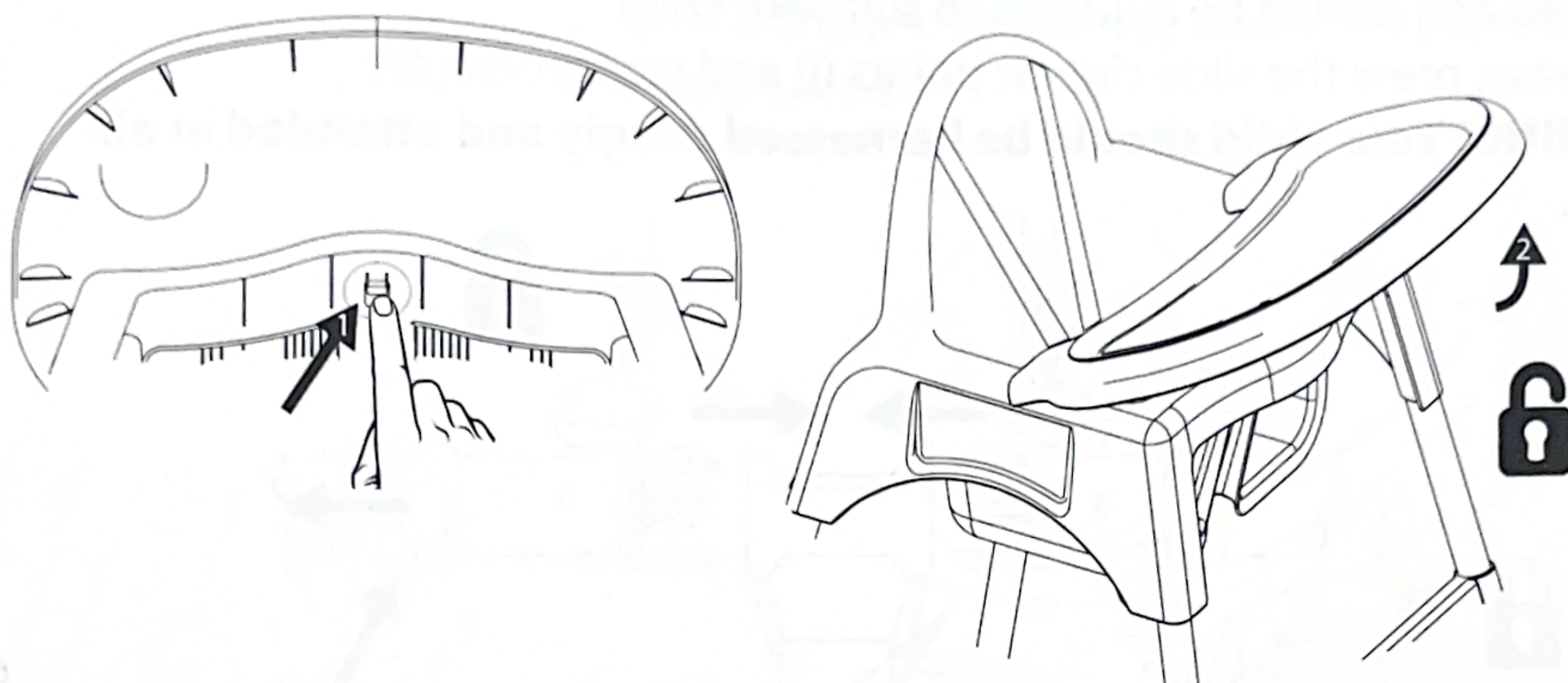
4a. Attach the tray (B) to the seat unit. Locate hooks underneath tray at both sides and insert into the allocated slots on the seat unit arms. Rotate tray down and press firmly into position. The tray will “click” once secure.

4b. There is an upper snack tray included. To remove this tray, pull out and upwards.

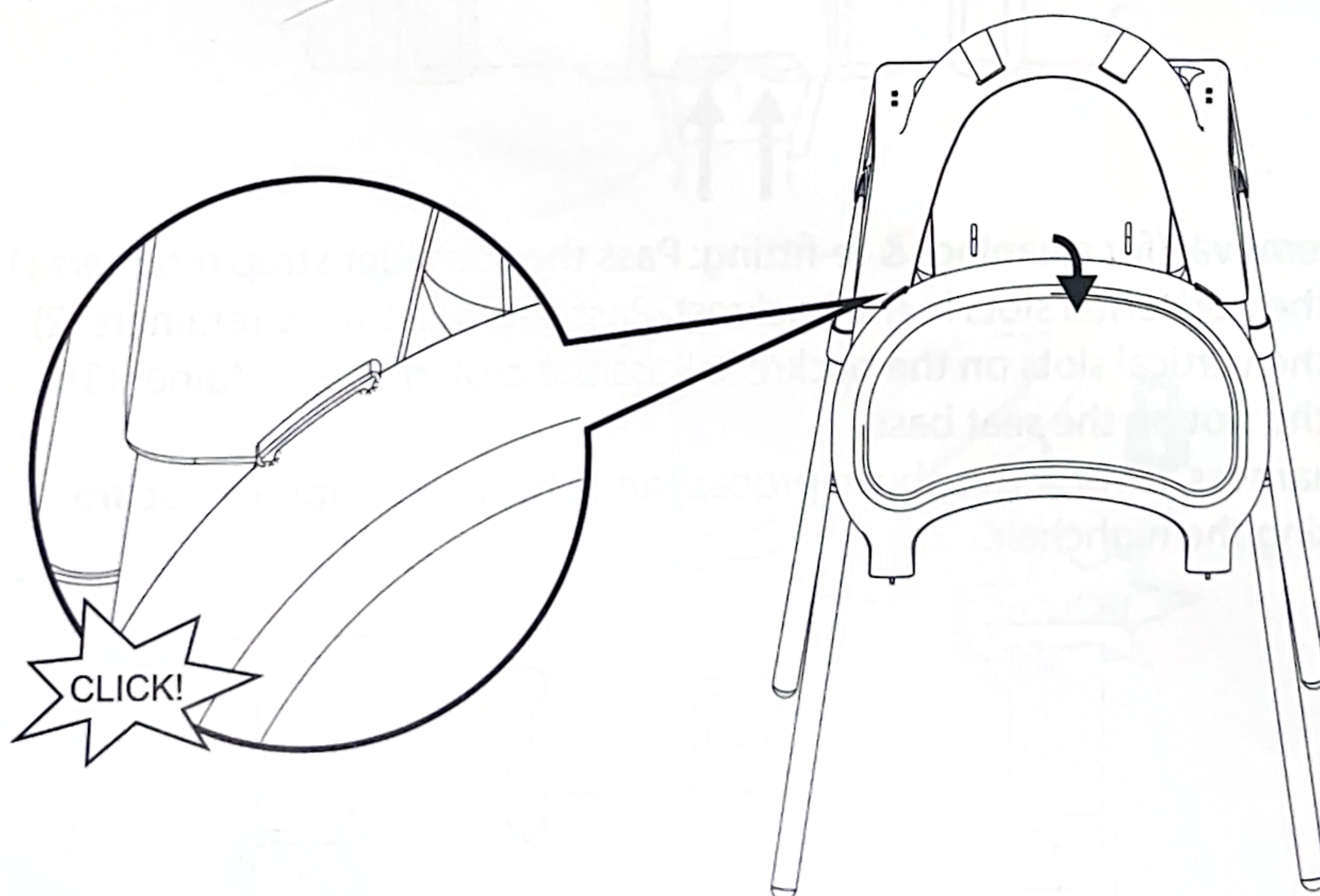


Assembly

5. To remove the main tray, press in the release clip located underneath the main tray and pull tray upwards.



6. The tray can be stored on the rear of the highchair. With the top of the tray facing outwards, attach the edge of the tray into the allocated plastic clips located on the rear of the highchair seat unit. Ensure the tray edge fits between both clips.



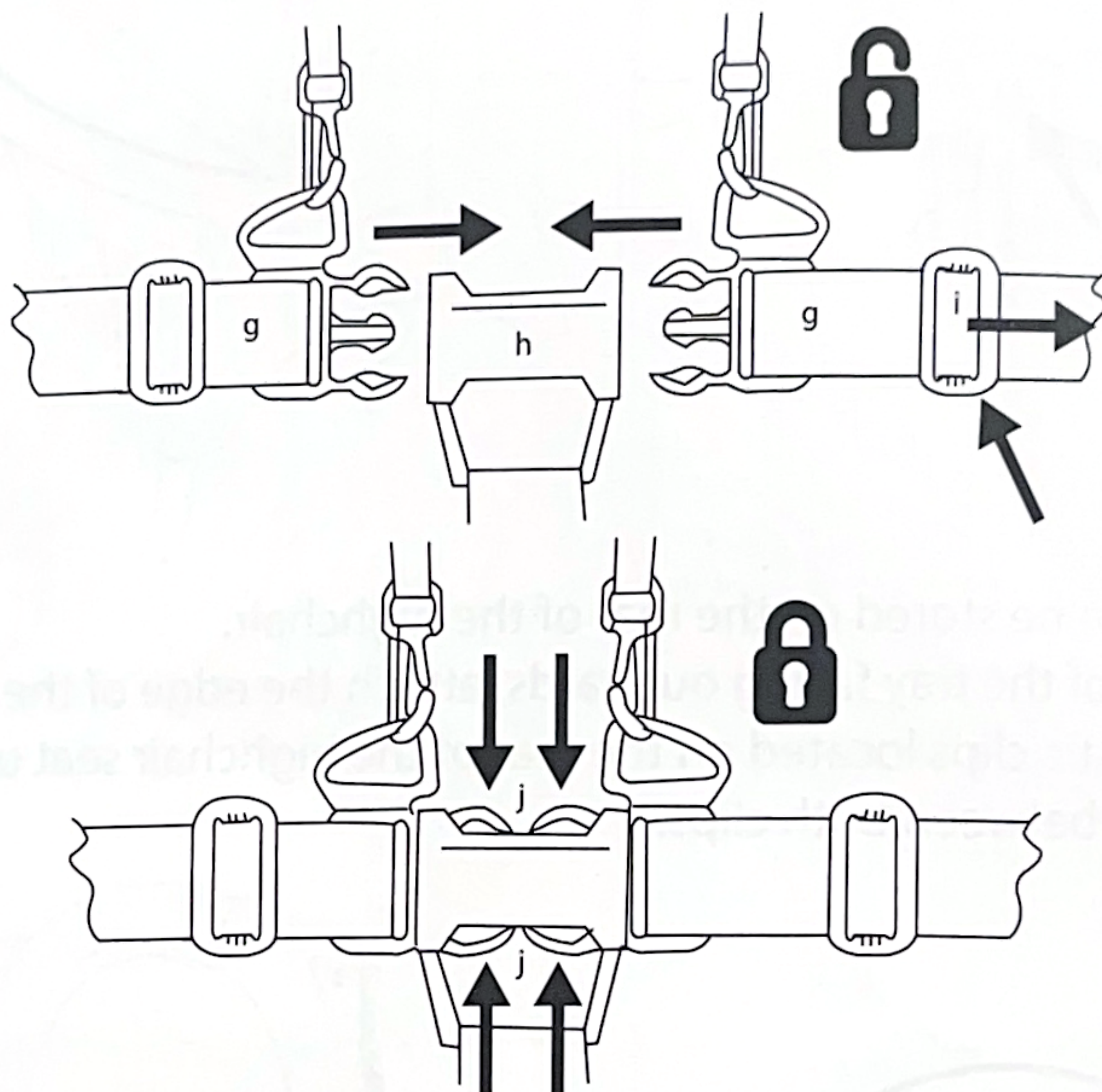
Harness

A 5-point safety harness is provided to restrain your child and should always be worn.

To fasten, push the side clips (g) into the centre buckle (h). Sliding adjusters (i) are fitted and should be adjusted to suit your child.

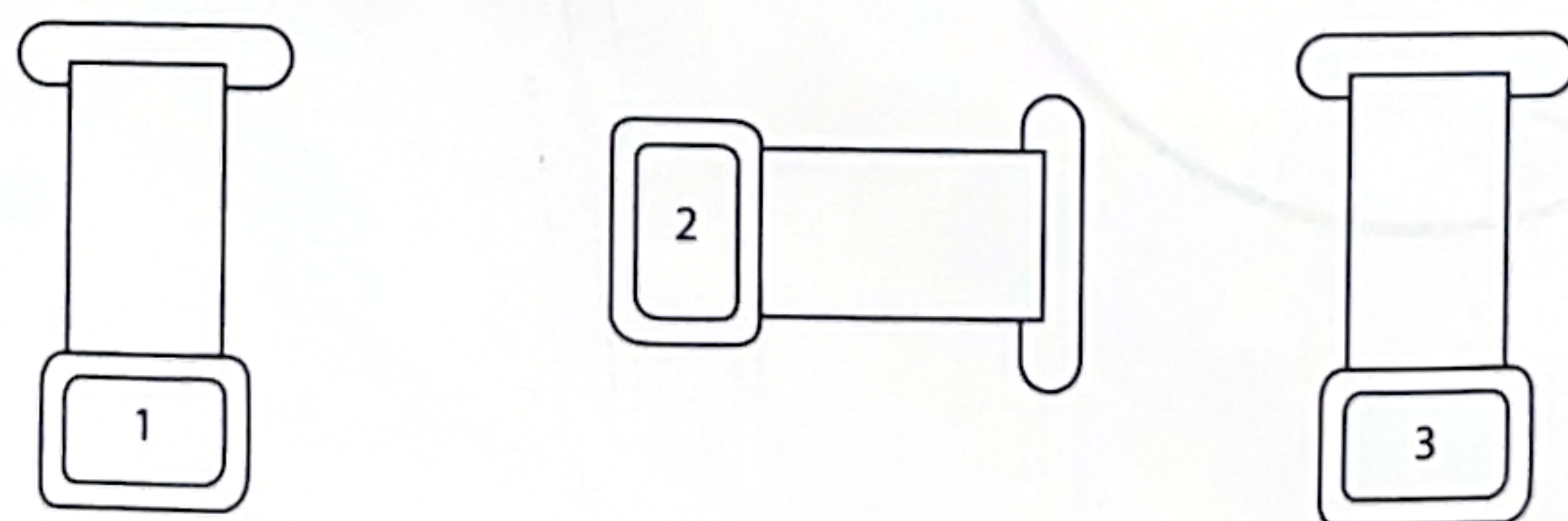
To release, press the slide clips at points (j) and remove buckle.

WARNING! Your child should be harnessed snugly and attended at all times.



Harness removal (for cleaning) & re-fitting: Pass the shoulder strap retainers (1) through the horizontal slots in the backrest. Pass the waist strap retainers (2) through the vertical slots on the backrest. Pass the crotch strap retainer (3) through the slot on the seat base.

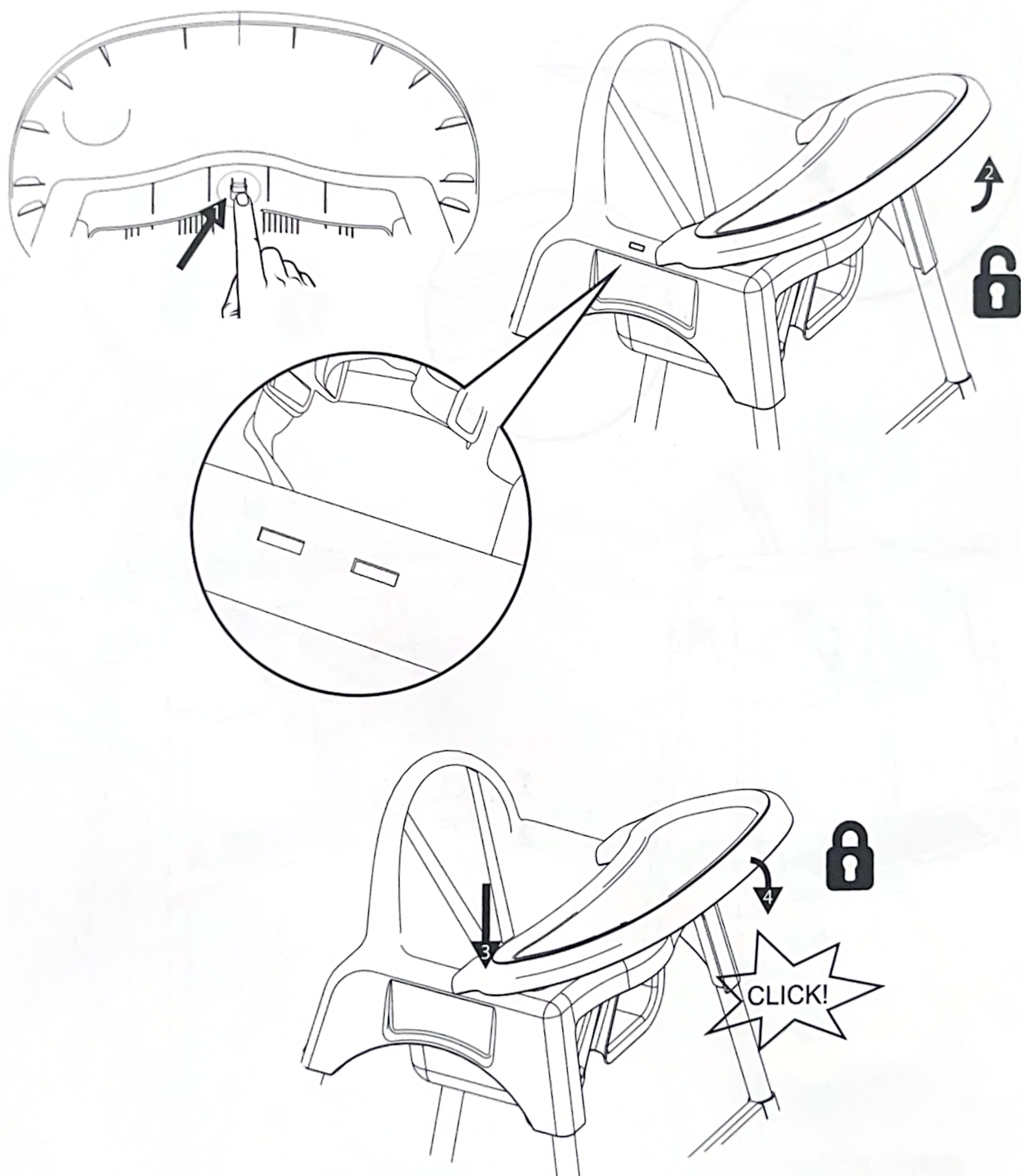
To re-fit harness, reverse the above process and check all straps are secure before using the highchair.



Tray Adjustment

The highchair has 2 adjustable tray positions.

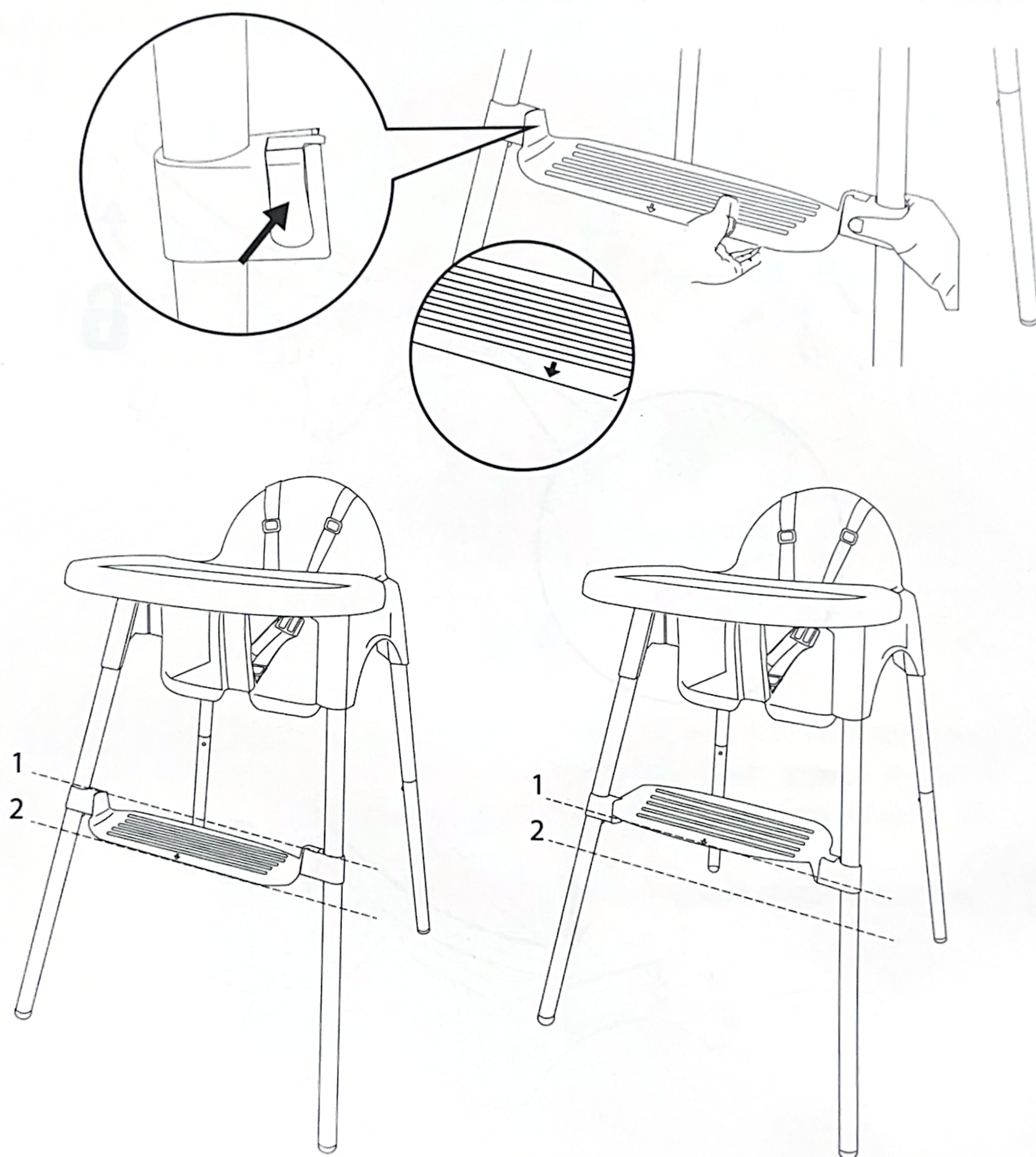
To adjust the tray, press in the release clip located underneath the tray and pull upwards to remove. Re-attach the tray in your preferred position. Insert the hooks into the preferred slots on the seat unit arms. Rotate tray down and press firmly into position. The tray will click once secure.



Footrest Adjustment

The footrest has 2 adjustable positions.

On the back, push in the clips at the sides, to remove the footrest. Turn the footrest over and ensure the arrow is facing the front. Re-align the notches with the connection posts on the upper legs and push down to secure.

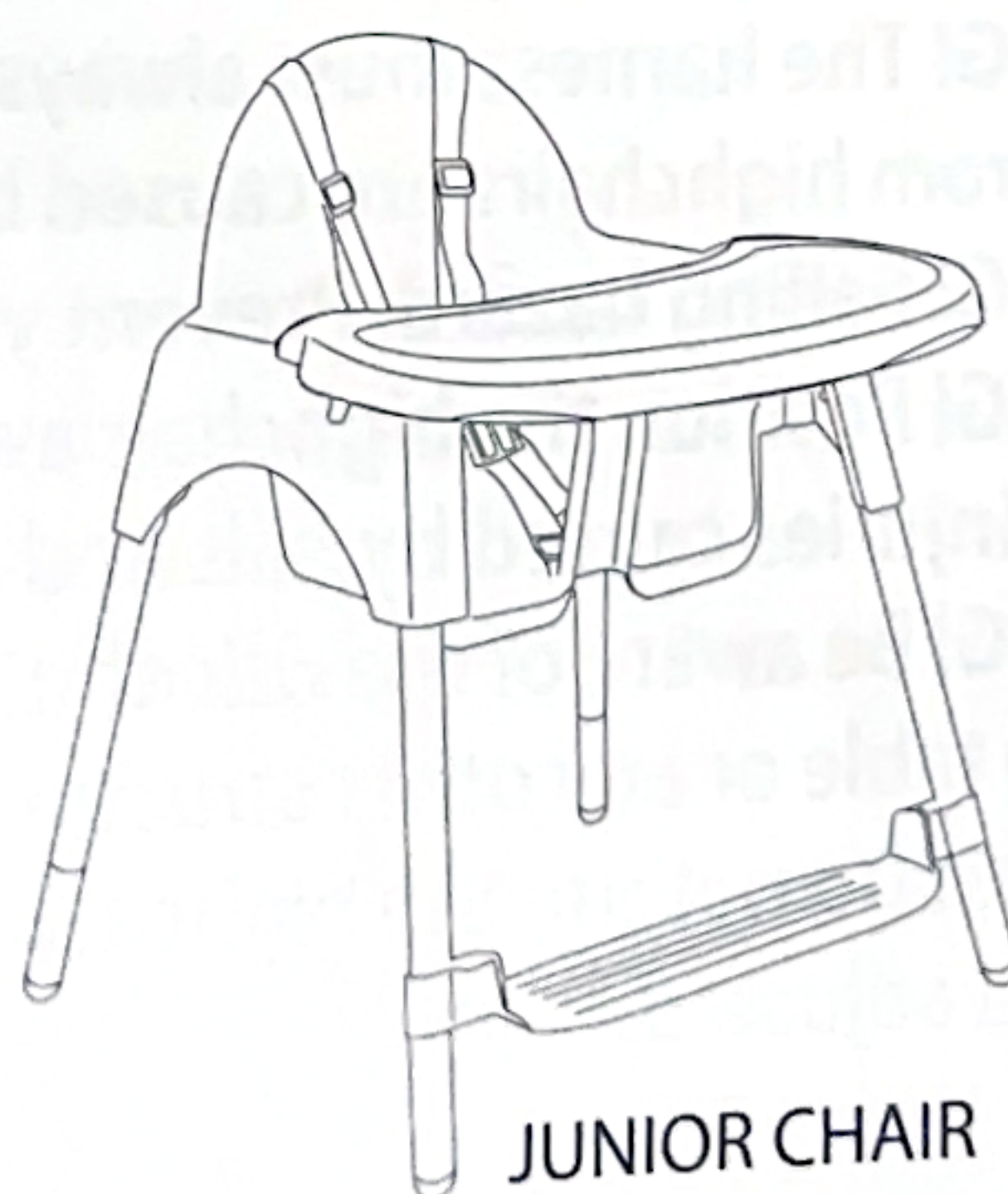
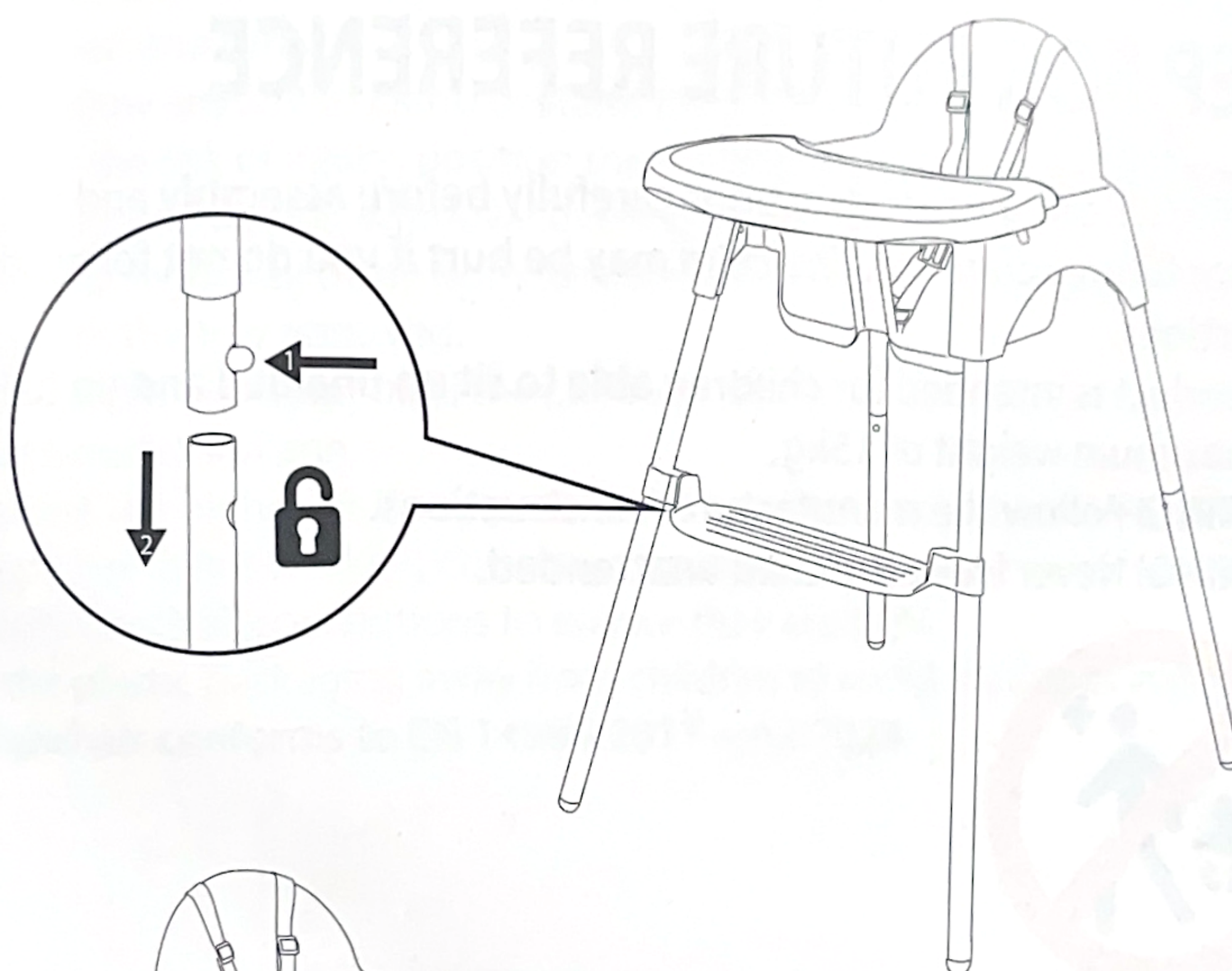


Height Adjustment

The highchair converts to a junior chair.

To adjust the leg height, remove the lower legs. Press in the metal spring pin located at the bottom of the upper leg and pull lower leg away.

WARNING! Do not adjust the height when child is in the seat.



Safety

IMPORTANT: **READ CAREFULLY AND** **KEEP FOR FUTURE REFERENCE**

WARNING! Read these instructions carefully before assembly and use and keep for future reference. The child may be hurt if you do not follow these instructions.

The product is intended for children able to sit up unaided and up to 3 years or a maximum weight of 15kg.

WARNING! Follow the manufacturer's instructions.

WARNING! Never leave the child unattended.



WARNING! Always keep child in view while in the highchair.

WARNING! The harness must always be used and correctly fitted. Most injuries from highchairs are caused by falls.

WARNING! Falling hazard: Prevent your child from climbing on the product.

WARNING! Position the highchair away from solid structures and benches to avoid injuries caused by falls and by access to dangerous items.

WARNING! Be aware of the risk of tilting when your child can push its feet against a table or any other structure.

WARNING! Do not use the highchair unless all components are correctly fitted and adjusted.

Safety

WARNING! Be aware of the risk of open and other sources of strong heat, such as electric bar fires, gas fires etc. in the vicinity of the highchair.

- Position the highchair on a flat, even and horizontal floor and do not elevate the highchair on any structure or table.
- Be aware of the risk of tilting when your child can push its feet against a table or any other structure.
- DO NOT allow anyone to climb or stand on or inside of this highchair.
- To reduce the risk of injury, position the highchair away from furniture, walls, hot surfaces and liquids, window covering cords and electrical cords and position the highchair away from furniture when the child is not being used at a table with the tray removed.
- Do not use the highchair until the child can sit up unaided. This is usually around 6 months of age.
- Do not use the highchair if any part is broken, torn or missing. If any part of the highchair is not working correctly, repairs are recommended.
- Regularly check all connections to ensure they are tight.
- Keep the plastic packaging away from children to avoid danger of suffocation.

This highchair conforms to EN 14988:2017 + A2:2024

Care

Maintenance:

- This product requires regular maintenance to keep it in good working order. Regularly check all parts of the product to ensure that they are operating correctly and for signs of wear or damage.
- Before use, always check for any missing parts, torn material or if it is broken or damaged.
- NEVER USE if parts are missing or damaged.
- Use only parts and accessories approved by the manufacturer.

Cleaning:

- Wipe metals and plastics clean with a damp cloth.
- Clean by sponging with warm water and a mild detergent. A mild disinfectant may be used. Stubborn marks may be removed with a non-abrasive cream cleaner.
- Do not use abrasive pads, bleach or strong household cleaners.
- Dry thoroughly before re-use or storage.



Supplied by Baby Factory NZ. Ltd.
58 Stonedon Drive
East Tamaki
Auckland
New Zealand
www.babyfactory.co.nz

Due to variation in style and design the illustrations used in this instruction manual are generic.
Variation in design may occur in the images shown.