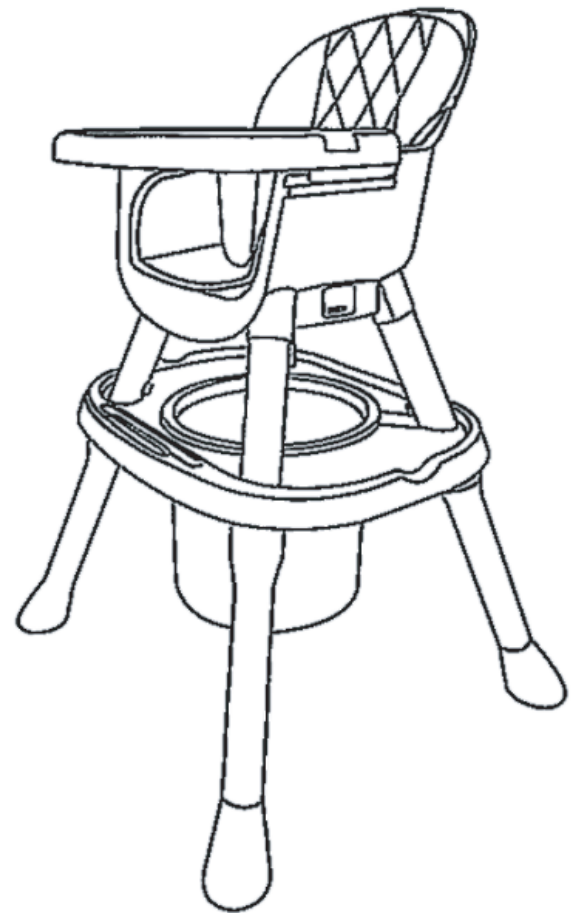


# Warning

- Maximum weight 30kg.
- Always use the restraint system and adjust to fit snugly. The harness must always be used and correctly fitted. Most injuries from high chairs are caused by falls.
- Seat pad is detachable and use without to create more space in the high chair.
- DO NOT place your child on tray.
- DO NOT adjust the height of the high chair with child in the seat.
- Be aware of the risk of tilting when your child can push its feet against a table or any other structure.
- Always use the high chair on a flat, even surface. Do not elevate high chair on table or any structure.
- Be aware of the risk of open fires and other sources of strong heat in the vicinity of the product.
- TO avoid burns, keep the child away from hot liquids, ranges, radiators, space heaters, fire places, and any other hot surfaces.
- TO avoid strangulation, never place near a window with cords for blinds or drapes.
- TO avoid injuries caused by falls or by access to dangerous items, position product away from solid structures, benches, furniture, walls, and electrical cords.
- Prevent serious injury or death. Do not use this product in motor vehicles.
- Never allow child to push away from table.
- Never lift and carry child in the product.
- Stay near and watch your child during use. Never leave the child unattended.
- DO NOT use this product if it is damaged, broken, torn, or has missing parts.
- DO NOT use this product unless all components are correctly fitted and adjusted.
- Highchair: Suitable for children 6 - 36 months.

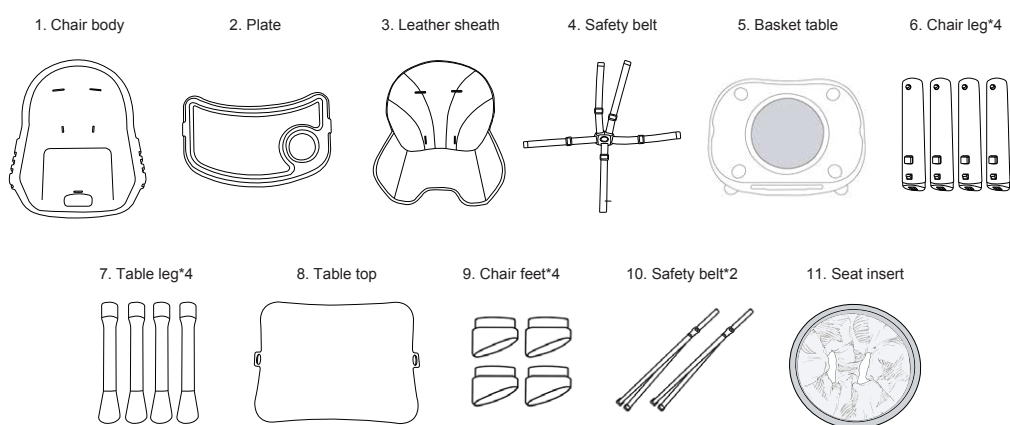


## INSTRUCTION MANUAL BABYCO VERSATILE 2-IN-1 HIGHCHAIR

Please read this manual carefully before use and keep it for future reference.

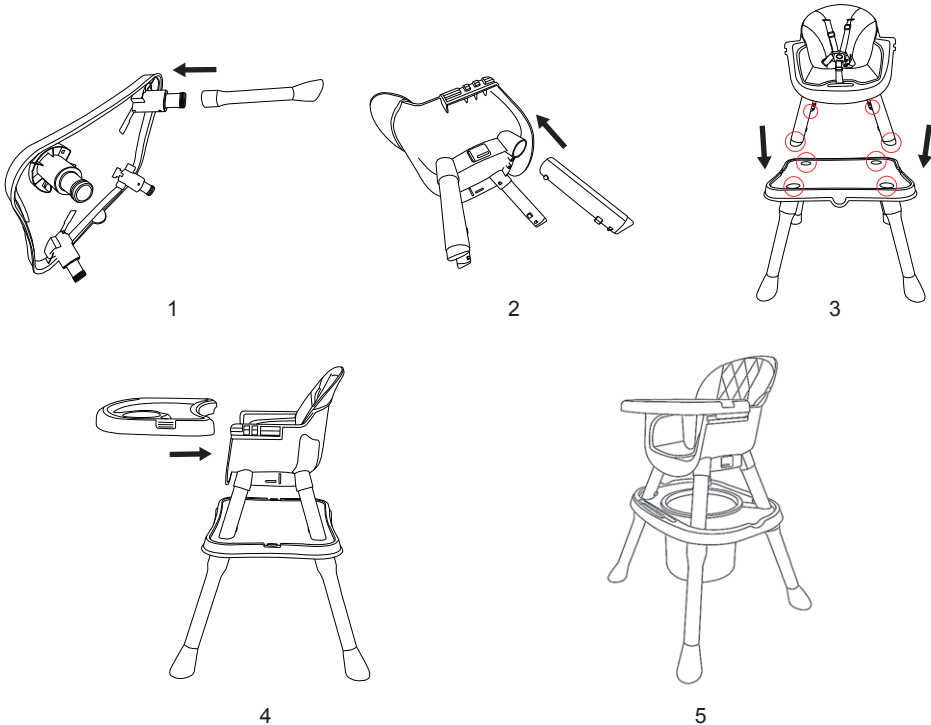
DISTRIBUTED BY BABY FACTORY (NZ) LTD  
www.babyfactory.co.nz

### Accessories



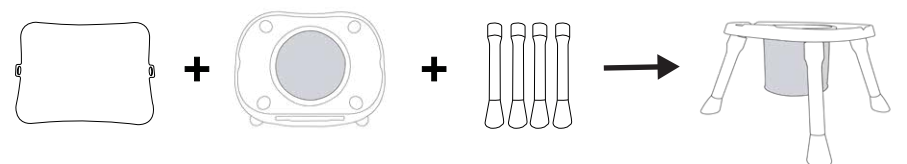
### Installation step

1. First, install the table legs.
2. Second, install the chair legs.
3. Then install the chair on the tabletop.
4. Install the dinner plate to the chair.
5. Become a baby high chair.



### Table mode

Attach the legs to the basket table, then place the table top to convert it into a table.



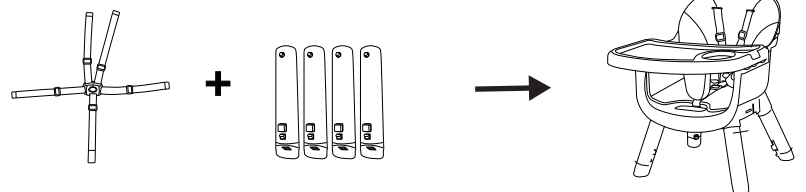
### Activity seat mode

Attach the legs to the table (without the basket) and secure the seat insert to use as an activity seat. **Suitable from 6 months or once your baby can sit up unaided.**



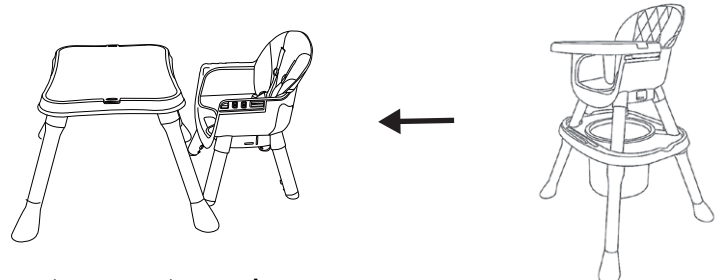
### Chair mode

Install the chair legs, put on the Leather sheath, put on the seat belt, and put on the dinner plate to become a chair.



### Study table mode

Under the baby high chair mode press four sides respectively "foot plate & handle plate locking key", and then take out the dinner plate, it will become the study table mode.



### Booster seat mode

Install the chair feet\*4 and put the safety belt\*2 through the slot at the bottom of the seat and fasten it around the dining room chair. When using the BOOSTER SEAT feature, make sure that the safety buckle goes through the hole without the need for the safety strap pair to go through the bottom of the SEAT.

