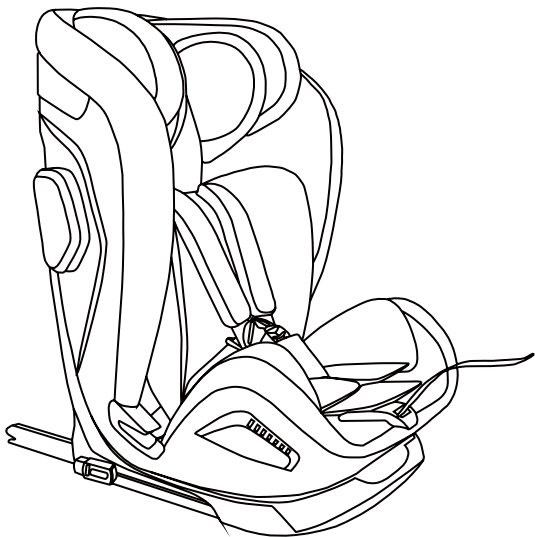


COZY  SAFE[®]
Without Compromise...

EST-811

Excalibur i-Size

Instruction Manual



User Manual

Thanks for purchasing the Cozy N Safe Excalibur i-Size car seat. We are pleased that our car seat will protect your child through a new stage of their life.

In order to protect your child correctly, this child car seat must always be used and installed as described in these instructions. If you have any other questions, please contact us.

Contents

1. Important Notice.....	2
2. Features.....	4
3. Seating positions in the vehicle.....	6
4. Adjusting and using the child car seat.....	7
4-1 Recline position adjustment.....	7
4-2 Harness adjustment.....	8
4-3 Headrest adjustment.....	8
4-4 Using the buckle.....	9
4-5 5-point harness system removal.....	9
4-6 ISOFIX installation and removal.....	10
4-7 Using the Top Tether.....	11
4-8 Using the Insert cushion.....	11
4-9 Using the Side Impact Protection (SIP).....	12
4-10 Removing and refitting the cover.....	12
5. Installation.....	13
5-1 76cm-105cm ISOFIX+Top Tether with harness fitting instructions.....	13
5-2 100cm-125cm ISOFIX+Top Tether with harness fitting instructions.....	14
5-3 100cm-150cm Vehicle 3-point belt + optional ISOFIX fitting instructions.....	14
6. Cleaning and maintenance	15
7. Notice.....	16
8. Warranty.....	16

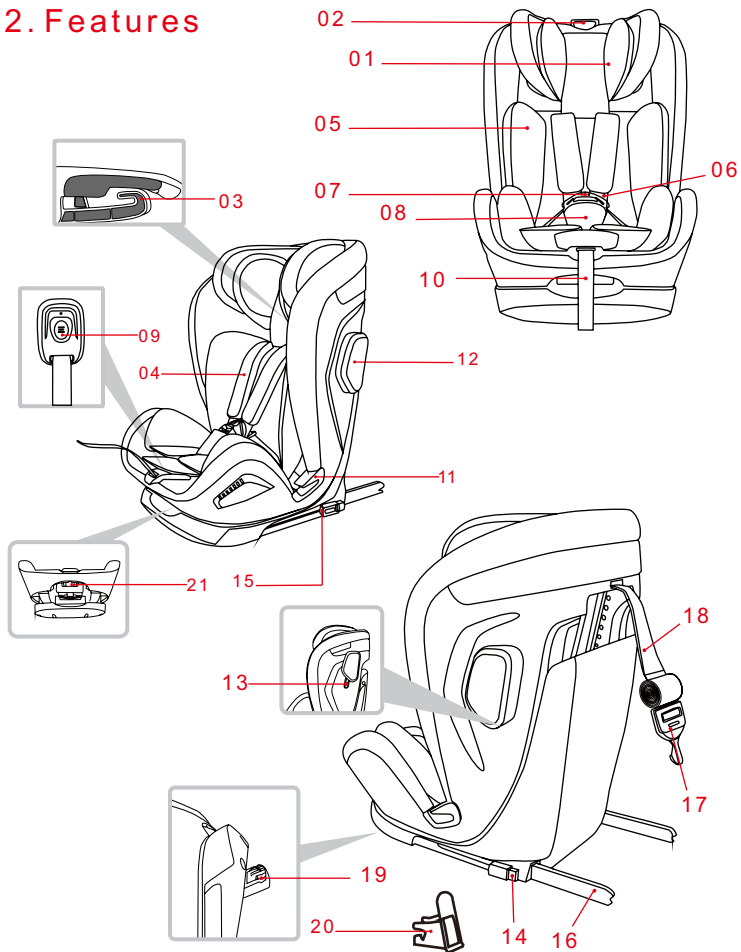
1. Important Notice

1. This child car seat is suitable for child's stature 76cm-125cm/≤25kg i-Size-universal ISOFIX, 100cm-150cm i-Size booster seat.
2. The instruction manual is kept at the bottom of base.
3. Please read carefully before installation, serious injury will occur if installed incorrectly. The manufacturer won't take responsibility for any risks in this case.
4. Never use the child car seat without the cover. Never use any cover which is not recommended by manufacturer to replace the old cover. Because the cover constitutes as an integral part of the car seats performance.
5. When the child restraint is not provided with a textile cover, the seat should be kept away from sunlight, otherwise it may be too hot for the child's skin.
6. The customer is advised not to use the car seat in seating positions where there is an active frontal airbag installed.
7. The device should be replaced when it has been subjected to violent stresses in an accident.
8. Please ensure all passengers in the car use safety belts, goods in the car must be fixed, otherwise the passengers and goods may injure your child when in an emergency brake situation.
9. The buckle can't be in a semi-locked status. Always confirm the buckle is locked before using. This is so that in case of emergency your child can be taken out quickly.
10. Don't make any additions or changes the way the harness system is installed in the child car seat, this could seriously affect the safety and functionality of the seat.
11. It's dangerous to make any alterations or additions to the device without the approval of the Type Approval Authority, it's also dangerous not to follow closely the installation instructions provided by the manufacturer.
12. The child should not to be left in their car seat unattended.

13. Keep the child seat away from the corrosive or hazardous materials.
14. Always keep the child car seat secured in the vehicle even when it is unoccupied.
15. Don't use the second-hand child car seat.
16. Ensure that any lap strap is worn low down, so that the pelvis is firmly engaged.
17. Any straps holding the child car seat to the vehicle should be tight, any straps restraining the child should be adjusted to be suitable for the child's body. Always ensure that straps are not twisted.
18. Don't to use any load bearing contact points other than those described in the instructions and marked on the child restraint.
19. Do not use a forward-facing child car seat when child stature less than 76cm.
20. The instructions can be retained on the child restraint for it's life period, and please take good care of the manual.
21. The rigid items and plastic parts of the child restraint must be so located and installed that are not liable, during everyday use of the vehicle, to become trapped by a movable seat or in a door of the vehicle.
22. The child car seat should only be used in a forward facing position when in use.
23. Any luggage or other objects liable to cause injuries in the event of a collision should be properly secured.
24. If you have any questions about using or installing the child seat. Please contact the manufacturer or retailer.
25. The user should also refer to the vehicle manufacturer's handbook.
26. The child restraint may not fit in all approved vehicles when used in one of these positions.

IMPORTANT - DO NOT USE BEFORE THE CHILD'S AGE EXCEEDS 15 months.

2. Features



NO.	ITEM NAME	NO.	ITEM NAME	NO.	ITEM NAME	NO.	ITEM NAME
01	Headrest	02	Headrest Adjustment Handle	03	Shoulder Belt Guide	04	Chest Pad
05	Insert Cushion	06	5-Point Harness	07	Harness Buckle	08	Buckle Pad
09	Harness Adjustment Button	10	Harness Adjustment Strap	11	Belt Guide	12	SIP
13	SIP Fixing Groove	14	ISOFIX Release Button	15	ISOFIX 2nd Lock Button	16	ISOFIX Connector
17	Top Tether Hook	18	Top Tether Strap	19	Recline Adjustment Wedge Under Base	20	ISOFIX Insert Guide
21	Recline Position Adjustment Handle						

suitable height and installation method				
height	direction of installation	child fit method	seat angle	fitting method for seat
76-87cm	forward	Harness	5 positions	ISOFIX+TT
87-105cm	forward	Harness	5 positions	ISOFIX+TT
		BELT	5 positions	BELT+ FIT
			5 positions	BELT
100-125cm	forward	Harness	5 positions	ISOFIX+TT
	forward	BELT	5 positions	BELT+ FIT
	forward		5 positions	BELT
125-150cm	forward	BELT	5 positions	ISOFIX+TT
	forward		5 positions	BELT+ FIT
	forward		5 positions	BELT

3. Seating positions in the vehicle



Danger! Do not use the child car seat in the passenger seat with an active airbag. (The airbag may cause serious injuries to the child)

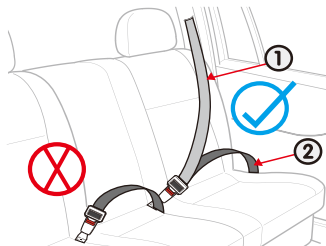
Please read the instruction manual carefully, so that the child car seat can be used correctly.



Correct / suitable

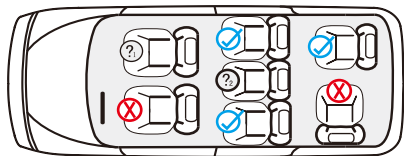


Wrong / not suitable



① Car seat belt - shoulder belt

② Car seat belt - lap belt



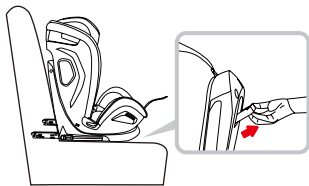
The child car seat cannot be used in the front passenger seat with an airbag.



If the shoulder belt, lap belt and ISOFIX are all equipped, the child car seat can be used here.

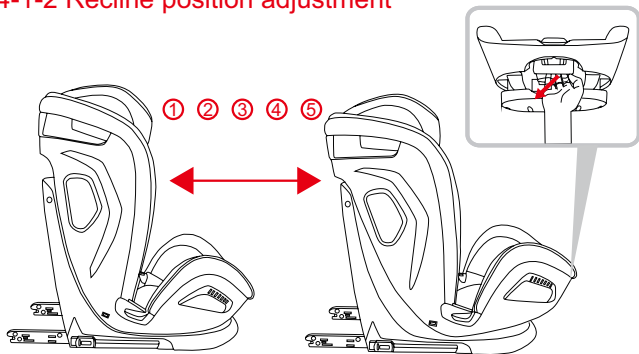
4. Adjusting and using the child car seat

4-1-1 Angle position of adjustment



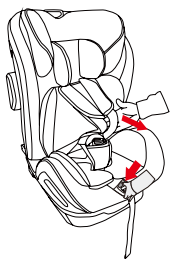
Find the recline adjustment wedge under the base **19** and pull it forward. If there is a gap between the car seat and the vehicle seat use the recline adjustment wedge to remove the gap.

4-1-2 Recline position adjustment



The child car seat can be adjusted to 5 different positions, Pull the recline position adjustment handle **21** with your hand. While holding the adjustment handle use your other hand to adjust the recline position by pushing or pulling on the car seat. Release the handle when the seat is at the correct recline position.

4-2 Harness adjustment

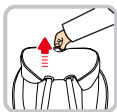


Loosen: Press the harness adjustment button **09** and grasp the harness **06** with your other hand, and pull towards you (DO NOT pull chest pads **04**).

Tighten: To tighten the harness pull the harness adjuster strap **10** away from the car seat. You may need to guide the harness into place using your other hand.



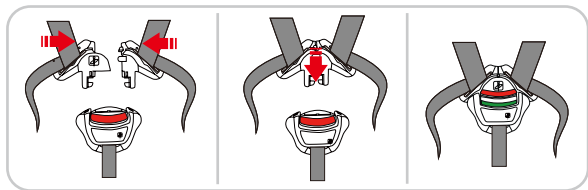
4-3 Headrest adjustment



Up: Pull the headrest adjustment handle **02** up, to adjust the height.

Down: Pull the headrest adjustment handle **02** up with one hand, and press the headrest **01** down with another hand.

4-4 Using the buckle

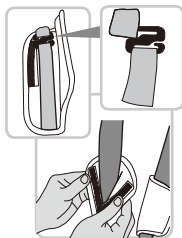


Put the right and left tongues of the buckle together, and insert into the harness buckle **07**, it is locked when a **CLICK** is heard. Pull the harness adjustment strap, tighten the harness **06**. Adjust the harness **06** to the most suitable length for the child's body, ensuring the harness is tight (please refer **4-2** to check how to adjust the harness).

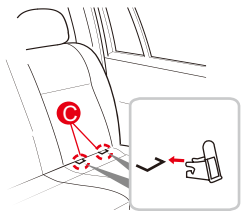
Tips: Press the red button down to release the buckle.

4-5 5-point harness system removal

1. Open the Velcro on the chest pads **04**, and separate the chest pad connector and remove the chest pads.
2. Pull out the insert cushion **05**, release the harness buckle **07**, pull out buckle pad **08**, store the buckle under the upholstery in the compartment within the seat, store the harness **06** and buckle latches together under the upholstery.
View the fitting video at www.cozynsafe.com and follow along.

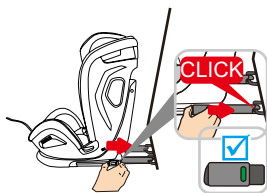


4-6 ISOFIX installation and removal



ISOFIX Installation

1. If your vehicle is not equipped with the ISOFIX insert guides as standard. Clip the two ISOFIX insert guides **20** which are included with the seat with the cut-out facing upwards onto the two ISOFIX anchor points **C** of your vehicle.

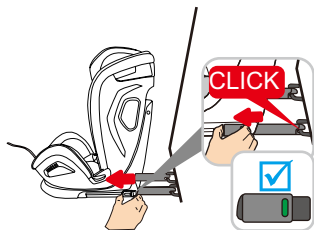


2. Press both the ISOFIX 2nd lock button **15** and ISOFIX release button **14**, slide out the ISOFIX connectors **16**.

3. Insert the ISOFIX connectors onto two ISOFIX anchor points **C**, until there is a **CLICK** and the safety indicators turn completely green.

4. Push the car seat back towards the vehicle seat with a substantial amount of force as far as it will go.

5. Shake the base of car seat to ensure the ISOFIX is fixed firmly into place.



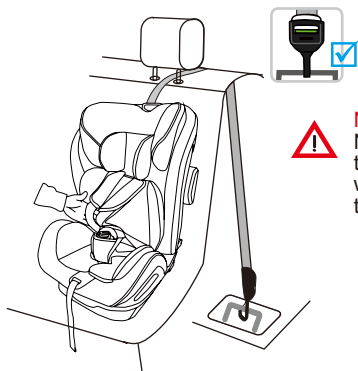
ISOFIX removal

Press both the ISOFIX 2nd lock button **15**, and ISOFIX release button **14**, the ISOFIX can be removed when there is a **CLICK** sound.

4-7 Using Top Tether



1. Take the top tether **17/18** out from the bottom of the car seat, adjust the Top Tether by pressing the Top Tether adjustment button **N** and pulling on the top tether strap **18**, pass the top tether through the vehicle seat headrest.
2. Fix the top tether hook **17** on the anchor point according to the car manual, then tighten the top tether by pulling the top tether strap **18** (tighten the Top Tether until the indicator shows green).

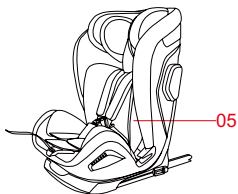


Notice:

Never use the luggage hook, top tether anchor points can be located with the below mark. Please refer to your vehicle owners manual.



4-8 Using the Insert cushion



Use the insert cushion **05** when the height of your child is ≤ 87 cm.

The insert cushion **05** is more comfortable for smaller children and offers additional protection.

4-9 Using the Side Impact Protection (SIP)



Installing the SIP

Slide the SIP on to the SIP fixing groove starting from the top. Always use on the side closest to the door.



Removing the SIP

Slide the SIP up, then it can be removed.

Notice: If you use the SIP, the car seat may not fit all vehicles.

4-10 Removing and refitting the cover

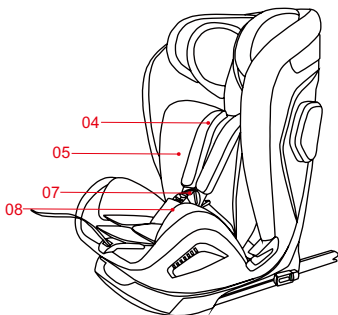
Cover removal

refer to 4-3), refer

1. Adjust the headrest to the highest position (insert cushion **05**).
2. Release harness buckle **07**, remove chest pads **04** and buckle pad **08** (refer to 4-5).
3. Remove the headrest pad and upholstery pad carefully

Cover fitting

1. Adjust the recline position to the most upright position and adjust the headrest to the highest position.
 2. Fit the headrest pad and upholstery pad.
 3. Fit the shoulder pads **04** and buckle pad **08**.
- View the fitting video at www.cozynsafe.com and follow along.

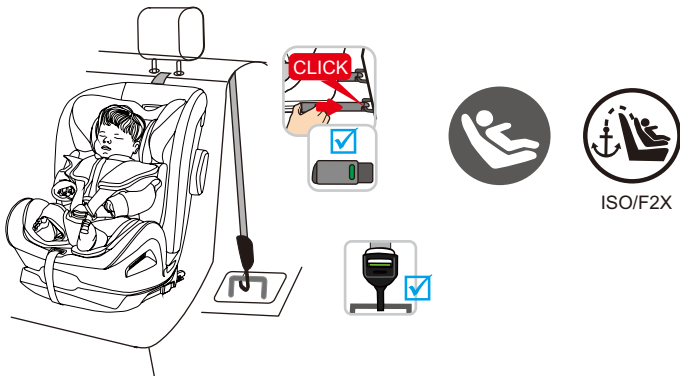


5. Installation

5-1 76cm-105cm(≤18kg)

ISOFIX+Top Tether with the harness

1. Fix the ISOFIX
2. Take the top tether hook **17** and pass through the vehicle seat headrest and fix it to the vehicle Top Tether anchor point, tighten the top tether strap **18** (refer to 4-7).
3. Place your child in the car seat with the 5-point harness.



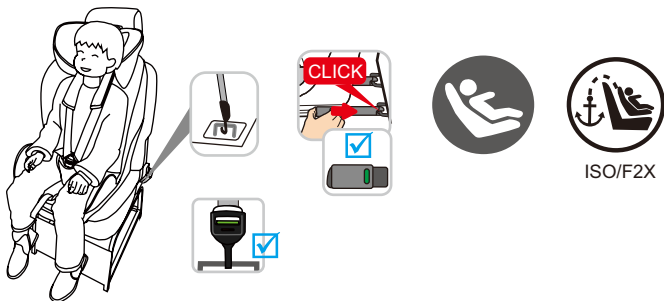
1. Check the harness and vehicle belt for twists or damage, make sure that the car seat is correctly and firmly installed, ensuring that the harness is correctly positioned to your child's body.
2. The Top Tether indicator will show 'green' when it is tightened.
3. Ensure there are no twists on the 5-point harness straps.
4. Use the SIP on the side nearest to the door.
5. Open the recline adjustment wedge under the base to adjust the recline position (refer to 4-1) if needed.



5-2 100-125cm(≤25kg)

ISOFIX+Top Tether with the harness

1. Fix the ISOFIX **16** on the ISOFIX anchor point of the car (refer to 4-6).
2. Take the top tether hook **17** and pass through the vehicle seat headrest and fix it to the vehicle Top Tether anchor point, tighten the top tether strap **18** (refer to 4-7).
3. Place your child in the car seat with the 5-point harness.



1. Check the harness belt and vehicle belt for twists or damage, make sure that the car seat is correctly and firmly installed, ensuring that the harness is correctly positioned to your child's body.
2. The Top Tether indicator will show 'green' when it is tightened.
3. Ensure there are no twists on the 5-point harness straps.
4. Use the SIP on the side nearest to the door.
5. Open the recline adjustment wedge under the base to adjust the recline position (refer to 4-1) if needed.

5-3 100cm-150cm

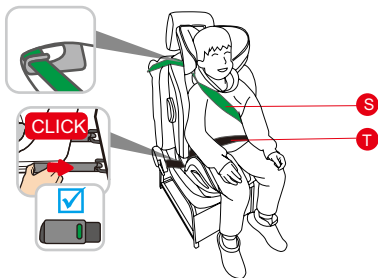
Vehicle 3-point belt + optional ISOFIX.



ISO/B2

1. Remove the harness system (refer to 4-5).
2. Fix the optional ISOFIX attachment **16** on the ISOFIX anchor points of the vehicle (refer to 4-6).
3. Vehicle seat belt **S** should go through shoulder belt guide on the headrest **03** and cross over the child's shoulder.

4. Vehicle belt **T** goes through the belt guide **11** and across child's lap.
5. Continue to pass the 3 point belt across your child and buckle the belt up into the vehicle buckle, you will hear a CLICK sound. Ensure both parts of the belt are in the belt guide **11**.



1. Check the vehicle belt, make sure that the car seat is correctly and firmly installed, ensuring that the vehicle belt is correctly positioned to your child's body.
2. Ensure there are no twists on the 3 point vehicle belt.
3. Use the SIP on the side nearest to the door.
4. Open the recline adjustment flap base to adjust the recline position(refer to 4-1) if needed.

6. Cleaning & Maintenance

Important tips: The cover is a safety feature. Never use the child seat without it, don't put your child's safety at risk by using other replacement covers, they could stop the child seat from protecting your child because other replacement covers will not perform correctly.

Washing instruction

The cover is removable and washable at 30°C, line dry only.



Machine wash, cold



Do not bleach



Do not tumble dry



Do not iron



Dry clean, any solvent

7. Notice

Notice

This is an i-Size Enhanced Child Restraint System. It is approved according to UN Regulation No. 129, for use in, i-Size compatible vehicle seating positions as indicated by vehicle manufacturers in the vehicle user's manual.

If in doubt, consult either the Enhanced Child Restraint System manufacturer or the retailer.

Notice

This is an i-Size booster seat Enhanced Child Restraint System. It is approved according to UN Regulation No. 129, for use primarily in "i-Size seating positions as indicated by vehicle manufacturers in the vehicle user's manual.

If in doubt, consult either the Enhanced Child Restraint System manufacturer or the retailer.

Only suitable if the approved vehicles are fitted with 3 point safety-belts, approved to UN/ECE Regulation No.16 or other equivalent standards.

8. Warranty

For the seat, we extend a warranty against defects in materials and workmanship for up to 24 months. The warranty period begins on the date of purchase.

A valid receipt is required for all claims.

The warranty covers a child car seat that has been handled properly and is returned in an orderly and clean condition.

The warranty does not cover:

- Normal wear and tear, and damage due to unreasonable use.
- Damages due to improper or inordinate usage.

Covers: All of our fabrics meet the highest standards regarding colorfastness against UV radiation. Nevertheless, all fabrics fade when exposed to UV radiation.

This is not due to defective materials, but to normal wear and tear, which is not covered by the warranty.

Please contact the manufacturer immediately in the event of a warranty claim.

CHILD INFORMATION
(KEEP WITH CAR SEAT AT ALL TIMES IN CASE OF EMERGENCY)

NAME:

.....

DATE OF BIRTH (DD/MM/YYYY):

.....

ADDRESS:

.....

.....

.....

ALLERGIES/MEDICAL CONDITIONS:

.....

.....

.....

EMERGENCY CONTACT 1 :

NAME:

.....

PHONE NUMBER:

.....

EMERGENCY CONTACT 2 :

NAME:

.....

PHONE NUMBER:

.....