

CHILD INFORMATION  
(KEEP WITH CAR SEAT AT ALL TIMES IN CASE OF EMERGENCY)

COZY **N** SAFE®  
Without Compromise...

COZY **N** SAFE®  
Without Compromise...

NAME:

.....

DATE OF BIRTH (DD/MM/YYYY):

.....

ADDRESS:

.....

.....

.....

ALLERGIES/MEDICAL CONDITIONS:

.....

.....

.....

EMERGENCY CONTACT 1:

NAME:

.....

PHONE NUMBER:

.....

EMERGENCY CONTACT 2:

NAME:

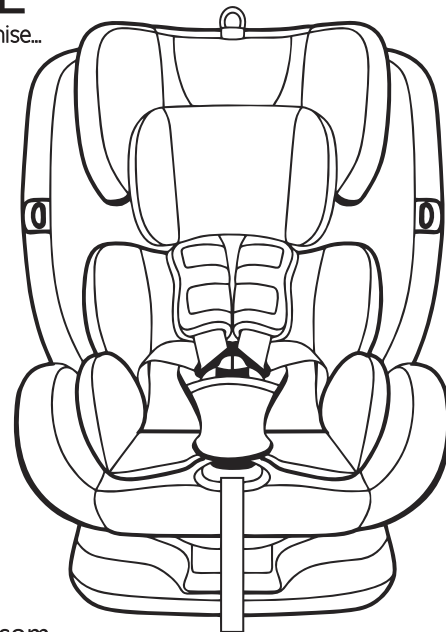
.....

PHONE NUMBER:

.....

A P O L L O

EST308  
Instruction Manual



[www.cozynsafe.com](http://www.cozynsafe.com)

Cozy N Safe, Oxford Street, Wolverhampton, West Midlands, WV14 7DP, UK  
Tel: +44 (0) 1902 494905, Email: [enq@cozynsafe.com](mailto:enq@cozynsafe.com), Web: [www.cozynsafe.com](http://www.cozynsafe.com)

## DEAR CUSTOMER

Thank you for purchasing the Cozy N Safe Apollo car seat! We couldn't be more thrilled to be part of your journey with your little one.

In order to ensure the safety of your child, please be sure to install and use this child car seat correctly as described in this manual. Please keep the manual secure for reference when needed. If you have any questions when using this product please feel free to contact us.

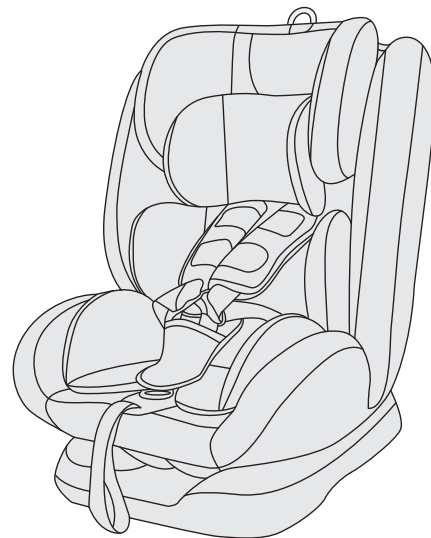
For warranty information please check our website at [www.cozynsafe.com](http://www.cozynsafe.com)

View the fitting video at [www.cozynsafe.com](http://www.cozynsafe.com)

## CONTENTS

---

1. Notice
2. Position In Vehicle
3. Pre-installation preparation / Features
  - 3.1 ISOFIX
  - 3.2 Headrest adjustment when using 5-points harness (Group 0+/1)
  - 3.3 Headrest adjustment when using 3-point belt (Group 2/3)
  - 3.4 Recline adjustment and rotation
4. Rearward Facing Installation Instructions
  - 4.1 Group 0+/1 (0-18kg ) ISOFIX+Top tether  
Using 5-point harness
  - 4.2 Group 0+/1 0-18kg 3 point belt+5 points harness
5. Forward Facing Installation Instructions
  - 5.1-1 Group 1 (9-18kg) 3-point seat belt using 5-point harness
  - 5.1-2 Group 1 (9-18kg) ISOFIX+ 3-point seat belt using 5-point harness
  - 5.2-1 Group 2/3 (15-36kg) 3-point seat belt
  - 5.2-2 Group 2/3 (15-36kg) 3-point seat belt + ISOFIX
6. Removing The Car Seat From Your Vehicle
7. Cleaning The Covers



# 1

## NOTICE

1. Please read the manual carefully, incorrect installation may cause serious injury, if in doubt please contact the manufacturer or the retailer.

2. The Apollo is suitable for children from birth to 36 kg (Group 0+/1/2/3, from birth to approx. 12 years old.) Below is a table for the appropriate fitting methods based on your child's weight.

1	Group 0+/1	0- 18KG	ISOFIX + Top tether using 5-point harness ( <b>rearward facing</b> )
	Group 0+/1	0- 18KG	3-point belt using 5-point harness ( <b>rearward facing</b> )
	Group 1	9- 18KG	ISOFIX + 3-point seat belt using 5-point harness ( <b>forward facing</b> )
	Group 1	9- 18KG	3-point seat belt using 5-point harness ( <b>forward facing</b> )
	Group 2/3	15- 36KG	3-point seat belt ( <b>forward facing</b> )
	Group 2/3	15- 36KG	ISOFIX + 3-point seat belt ( <b>forward facing</b> )

3. It is certified that this seat complies with ECE R/44 regulations and can be installed on most vehicles that comply with ECE R/16 or other equivalent standards.

4. For your child's safety, please read the instructions carefully. Failure to use this child car seat correctly increases the risk of serious injury or death

4.1 The 5-point harness can be used for children weighing up to 18kg (approximately 4 years old).

4.2 This product can also be used for children weighing 15-36kg (approximately 3-12 years old), by hiding the harness and using the vehicle's 3-point seat belt instead.

4.3 All straps should be fastened tightly to the child's body and must not be twisted.

4.4 Always ensure all belts and harnesses are properly fitted, and ensure any lap belts are worn low down so that the pelvis is firmly engaged

4.5 After an accident of any kind, the child safety seat should be replaced as unseen damage could have occurred.

4.6 Do not modify this car seat or use any accessories that haven't been supplied by this manufacturer

4.7 The seat can become very hot if left in direct sunlight. Contact with these parts could result in burning. Always touch the surface of any metal or plastic parts before putting your child in the seat.

4.8 Never leave children alone in the child safety seat when unattended.

4.9 Secure luggage and other objects in the vehicle, they are liable to cause injury in the event of a collision.

4.10 This product must be used with a cover. Do not use any other covers other than those recommended by the manufacturer. Covers contribute to the overall performance of the product.

4.11 This product is suitable for children weighing 0kg-36kg.

4.12 This product should always be used in a rear facing position until the child is 9kg, and cannot be installed on the front seat with an active air bag. When using the seat in a forward position, always try to install the safety seat in the rear seat. The front seat with an air bag can seriously injure the child.

4.13 This manual should be stored with the child safety seat during the products' life.

4.14 This product is not designed for home use, it can only be used in the car, please do not use it in the home.

4.15 When there is no child in the child car seat, it must be secured or stored in the trunk of the car.

4.16 During the daily use of the vehicle, make sure that all parts of the child safety seat are fixed in the correct position and are not liable to get stuck on a movable seat or door.

4.17 Before adjusting any movable or adjustable parts of the child safety seat, remove the child out of the safety seat.

4.18 Do not buy second-hand child safety seats, you have no way of knowing the history of the seat.

It is likely it could have unseen damage, or key components may be missing.

4.19 Do not use any other load bearing points other than those indicated.

4.20 If the position of the adult safety-belt buckle relative to the main load bearing contact points on the child safety seat is unsatisfactory. Please contact the manufacturer if in doubt about this point.



Products without certification and modified products are dangerous, and it is also dangerous if there are no installation instructions provided by the manufacturer. If the adult seat belt interferes with the position of the main load bearing point of the child restraint system, it cannot be used. If you have any questions about this, please contact the manufacturer of the child restraint system.

Notice regarding Universal category (Group 0+ I II III)

1. This is a "Universal" child restraint. It is approved to Regulation No. 44, 04 series of amendments, for general use in vehicles and it will fit most, but not all, car seats.
2. A correct fit is likely if the vehicle manufacturer has declared in the vehicle handbook that the vehicle is capable of accepting a "Universal" child restraint for this age group.
3. This child restraint has been classified as "Universal" under more stringent conditions than those which applied to earlier designs which do not carry this notice.
4. If in doubt, consult either the child restraint manufacturer or the retailer.

Notice regarding Semi- universal category (Group 0+ I II III )

This child restraint is classified for " Semi- universal" use and is suitable for fixing into the seat positions of the following cars:

CAR	FRONT	REAR	
referto vehicle list	Outer	Centre	
	Yes	Yes	NO

Seat positions in other cars may also be suitable to accept this child restraint. If in doubt, consult either the child restraint manufacturer or the retailer.

Notice regarding Semi- universal ISOFIX child restraint system (in Group 0+ )

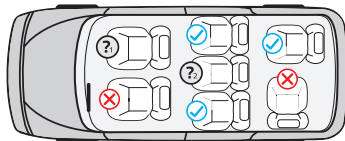
1. This is an ISOFIX CHILD RESTRAINT SYSTEM. It is approved to Regulation No. 44, 04 series of amendments for general use in vehicles fitted with ISOFIX anchorages systems.
2. It will fit vehicles with positions approved as ISOFIX positions (as detailed in the vehicle handbook), depending on the category of the child seat and of the fixture.
3. The mass group and the ISOFIX size class for which this device is intended is: Group 0+, D

## 2


### Position In Vehicle







## 2.1 Rearward facing



Danger! When the child seat is installed in a rear facing position, being hit by the air bag, may cause injury or even death of the child.

 Under no circumstances can this child safety seat be used on a car seat with an airbag activated.

Please read the instructions carefully to use the child safety seat correctly

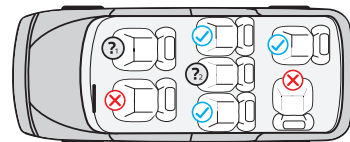
-  Correct fit  Incorrect fit
-  Do not install the child safety seat at the front seat with air bag.
-  Only with the three point safety belt, in this location.

## 2.2 Forward facing



① DIAGONAL BELT


② LAP BELT



 Correct fit

 Incorrect fit

Only suitable if the approved vehicles are fitted with 3 point safety belts, approved to UN/ECE Regulation No.16 or other equivalent standards.

 Do not install the child safety seat on the front seat with an air bag.

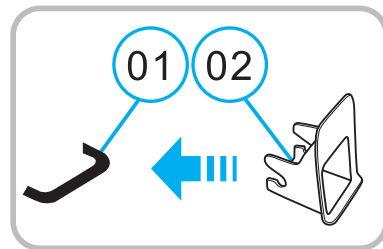
 Only with the three point safety belt, in this location.

# 3

## Pre-Installation Preparation / Features



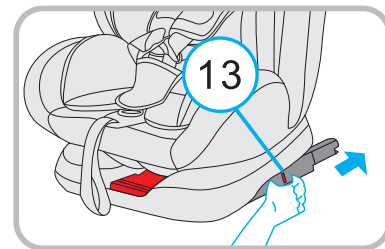
## 3.1 ISOFIX



(Figure 3.1.1)

If your vehicle is not equipped with ISOFIX guides, please insert the two ISOFIX guides (02) included with this child safety seat on to the ISOFIX contact point (01) (Figure 3.1.1).

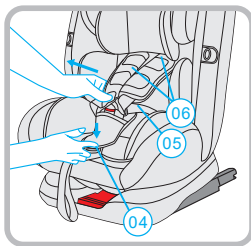
**Tip:** The ISOFIX points are located between the seat and the backrest. Please refer to the car manufacturer's manual.



(Figure 3.1.2)

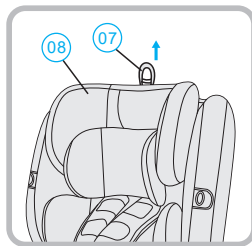
2. Press the ISOFIX release button (13) and extend it out to its' furthest point. (Figure 3.1.2)

### 3.2 Headrest adjustment when using 5-point harness (Group 0+/1)



(Figure 3.2.1)

1. Press the Harness Release (04) and pull out the two shoulder belts (05) at the same time. Please do not pull the shoulder pads (06).  
(Figure 3.2.1)

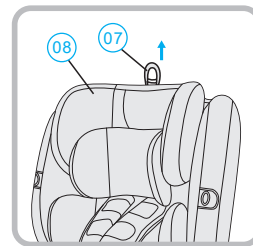


(Figure 3.2.2)

2. Pull up the headrest adjustment ring (07), adjust the headrest (08) to a suitable position for the child and release the ring.  
(Figure 3.2.2)

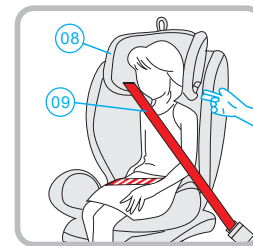
**Tip:** Where the shoulder straps on the harness enter the back of the child car seat. They should sit level with the child's shoulder.

### 3.3 Headrest adjustment when using 3-point belt (Group 2/3)



(Figure 3.3.1)

1. Pull up the headrest adjustment ring (07), adjust the headrest (08) to a suitable position for the child and release the ring.  
(Figure 3.3.1)



(Figure 3.3.2)

2. The headrest (08) must be adjusted to approximately two fingers between the child's shoulder and the bottom of the headrest (08). The correctly adjusted headrest (08) ensures that the diagonal part (09) of the car seat belt is in the correct position, to provide the best protection for your child.  
(Figure 3.3.2)

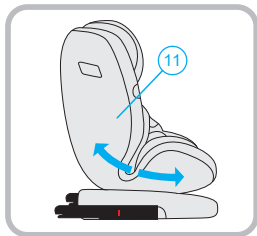
### 3.4 Recline adjustment and rotation

---



(Figure 3.4.1)

1. Pull the recline/rotation handle (10) in the direction of the arrow. You can then recline the seat to the appropriate recline position. Release the recline/rotation handle (10), and the car seat will be automatically locked again. (Figure 3.4.1) (Figure 3.4.2)



(Figure 3.4.2)



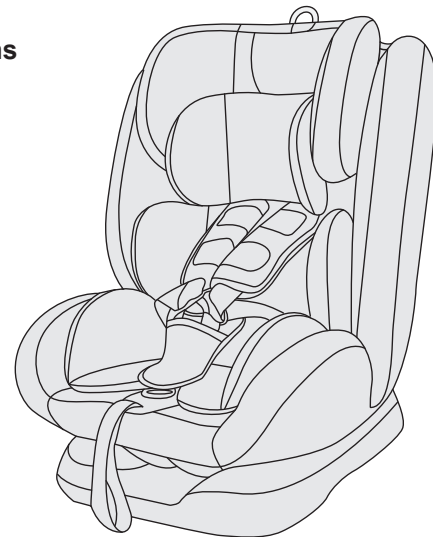
(Figure 3.4.3)

1. Pull the recline/rotation handle (32) in the direction of the arrow. You can then rotate the seat. Release the recline/rotation handle (32), and the car seat will be automatically locked again when in a correct position. Always check that the car seat is locked in position before travelling. (Figure 3.4.3)

## 4

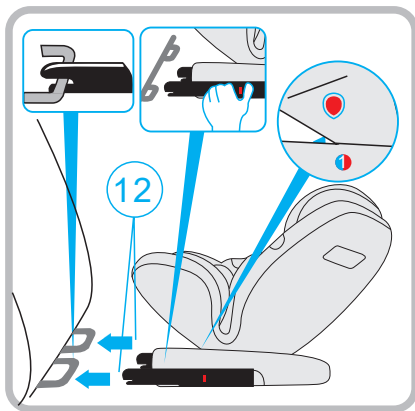
---

### Rearward Facing Installation Instructions



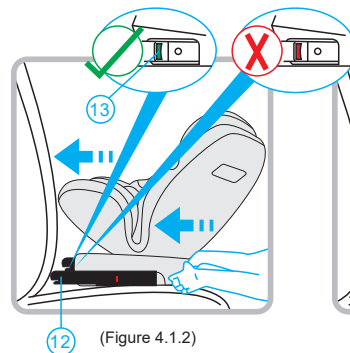


## 4.1 Group 0+ / 1 (0-18kg) ISOFIX+Top tether Using 5-point harness

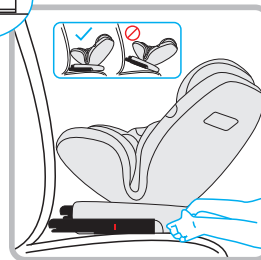


(Figure 4.1.1)

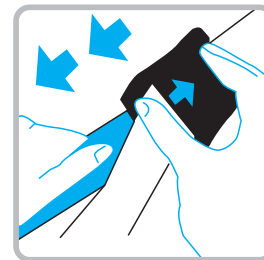
Please refer to chapter 3.1 to prepare the ISOFIX.  
Please refer to chapter 3.2 to adjust the 5-point harness  
Please refer to chapter 3.4 to place the seat in recline position 1. When using the car seat for group 0+ the seat should be rear facing.



(Figure 4.1.2)



(Figure 4.1.3)



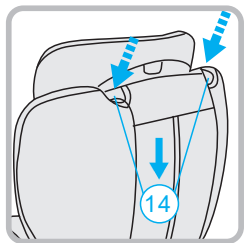
(Figure 4.1.4)

1. Please connect the two ISOFIX connectors (12) Insert the connectors into the ISOFIX guides and on to the ISOFIX connection points until you hear a "click" sound, the ISOFIX indicator will turn green. (Figure 4.1.1) (Figure 4.1.2)

2. Push the car seat firmly towards the back of the vehicle seat until it won't go any further. (Figure 4.1.3) Pushing one side at a time might help.

3. Press and hold the release button of the top tether and extend the top tether belt to give yourself some slack. (Figure 4.1.4)

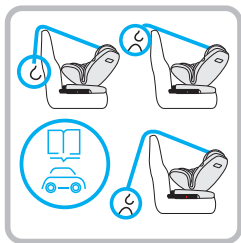
Note: The ISOFIX connector (12) is installed correctly only when the ISOFIX indicator turns completely green.



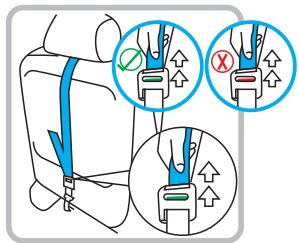
(Figure 4.1.5)



(Figure 4.1.6)



(Figure 4.1.7)



(Figure 4.1.8)

4. Feed the top tether belt into one of the routing guides (14) on the shoulder of the car seat furthest away from the door.

(Figure 4.1.5)  
(Figure 4.1.6)

5. Please hook the top tether fixing hook on to one of the recommended anchor points as per the vehicles' user manual.

(Figure 4.1.7)

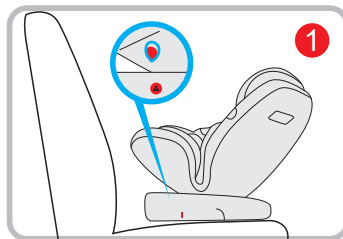
6. Pull the free end of the top tether belt to tighten until the indicator of the top tether turns completely green.

(Figure 4.1.8)

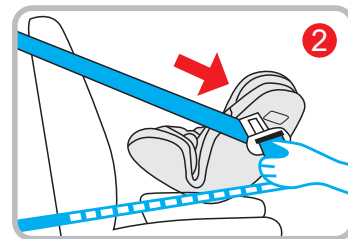
7. The seat is now ready for your child.

After rotating the seat you should always check the top tether indicator to ensure it is still green.

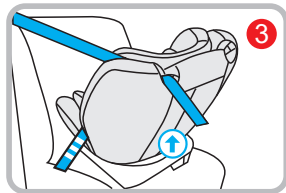
## 4.2 Group 0+/1 0-18kg 3 point belt + 5 point harness



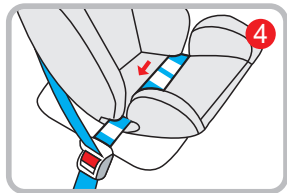
1. Adjust the seat recline to position 1 and place the car seat in rear facing position



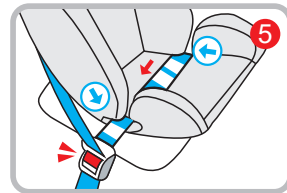
2. Pull the car's 3 point seat belt to the longest length.



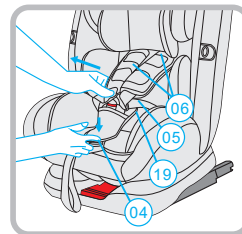
3. Pass the diagonal strap of the car's 3 point seat belt between the headrest and shell of the seat. Then through the seat belt guide hook on the "shoulder" of the seat.



4. Lift the insert and then pass the lap belt through the bottom of the seat following the guides.

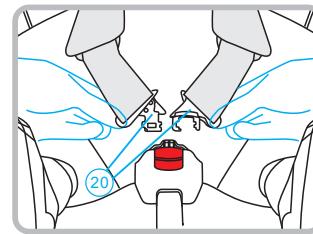


5. Buckle up the car's 3 point seat belt and pull the seat belt as tight as it will go.



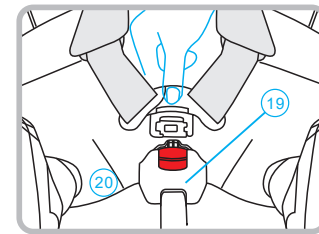
(Figure 4.1.9)

1. To use the 5-point harness, press the button to open the 5-point safety buckle (19), press the central adjuster (this is marked on the covers with a circle and PRESS) (04) and pull out the shoulder belts (05). Please do not pull the shoulder pads (06). (Figure 4.1.9)



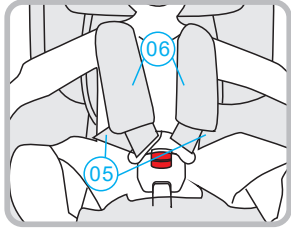
(Figure 4.1.10)

2. Make sure that the child's back rests flat on the car seat. Close the two clasps (20) of the 5-point safety buckle first, and then insert into the buckle. When it is locked, you will hear a "click". (Figure 4.1.10) (Figure 4.1.11) (Figure 4.1.12)

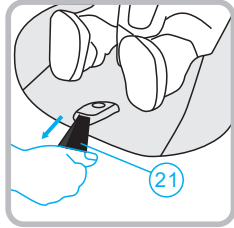


(Figure 4.1.11)

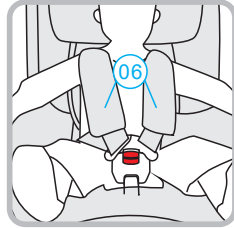
3. Pull the harness adjustment belt (21) until the 5-point harness is close to the child and not loose. (Figure 4.1.13) (Figure 4.1.14)



(Figure 4.1.12)



(Figure 4.1.13)



(Figure 4.1.14)

In order to ensure the safety of your child, please check the following items after each installation:

1. Make sure that the two ISOFIX connectors are correctly connected to the vehicle ISOFIX connection points, and the ISOFIX connection indicators are completely green.
2. Ensure that the child car seat is tightly attached to the vehicle seat.
3. Make sure that the top tether is tight and the top tether indicator is green.
4. Make sure that the 5-point harness is close to, but not squeezing the child.
5. Make sure that the shoulder straps are adjusted correctly and not twisted.
6. Make sure that the height of the shoulder pads is the same as the height of the child's shoulders.
7. Make sure that the 5-point buckle is locked.

# 5

## Forward Facing Installation Instructions

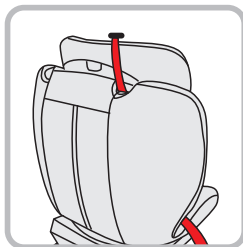


## 5.1-1 Group I (9-18kg) 3-point seat belt using 5-point harness



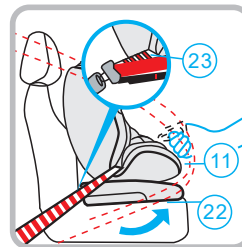
(Figure 5.1.1)

Please make sure that the 5-point harness is correctly installed on the child safety seat and not twisted.  
Please refer to chapter 3.2 to adjust the 5-point harness.  
Please refer to chapter 3.4 to adjust the recline position and that it is locked in position.  
Please refer to chapter 3.5 to rotate the car seat to a forward facing position.  
Please place the child safety seat on the vehicle seat in the same direction as the vehicle.  
(Figure 5.1.1)

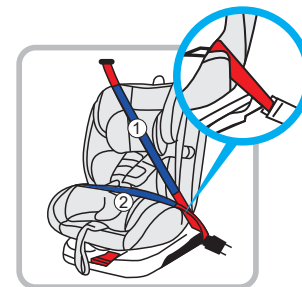


(Figure 5.1.2)

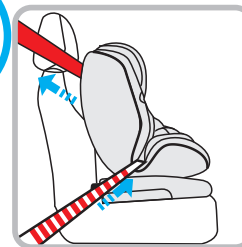
Pull out the 3-point safety belt of the vehicle to give yourself some slack.  
Feed the diagonal part of the belt through the routing guide on the shoulder of child car seat.  
(Figure 5.1.2) Then continue to feed the diagonal part between the headrest and the shell.  
Feed the lap belt through the routing guides on the bottom of the seating area (Figure 5.1.3)  
and continue to feed both parts of the vehicle belt across the seat putting the belts behind the infant inserts and sleeping pads. (As per ①② in Figure 5.1.4)



(Figure 5.1.3)



(Figure 5.1.4)

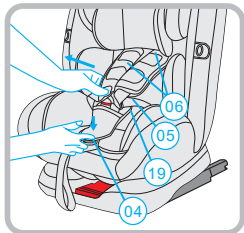


(Figure 5.1.5)

Feed both parts of the vehicle 3 point belt through the guide on the opposite side of the bottom of the seat (Figure 5.1.4)  
Then clip the 3 point belt into the vehicle buckle and pull to remove any slack in the belts.  
Remember to check to ensure the belts are not twisted.

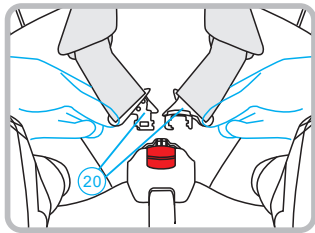
In order to ensure the safety of the child, please check the following items after each installation:

1. Make sure that the vehicle seat belt is not twisted and is tight.
2. Make sure that the child safety seat is close to the vehicle seat.
3. Make sure that the 5-point harness is close to the child, but not squeezing the child.
4. Ensure that the shoulder strap is in the correct position and not twisted.
5. Make sure that the height of the shoulder pad is the same as the height of the child's shoulders.
6. Ensure that the 5-point buckle is locked.



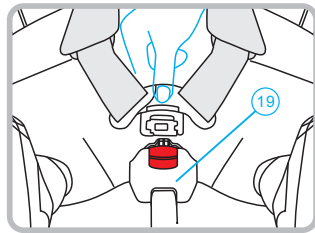
(Figure 5.1.6)

1. To use the 5-point harness, press the button to open the 5-point safety buckle (19), press the central adjuster (this is marked on the covers with a circle and PRESS) (04) and pull out the shoulder belts (05). Please do not pull the shoulder pads (06). (Figure 5.1.6)



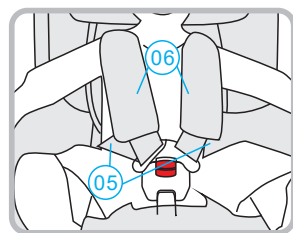
(Figure 5.1.7)

2. Make sure that the child's back rests flat on the car seat. Close the two clasps (20) of the 5-point safety buckle first, and then insert into the buckle. When it is locked, you will hear a "click". (Figure 5.1.7) (Figure 5.1.8)



(Figure 5.1.8)

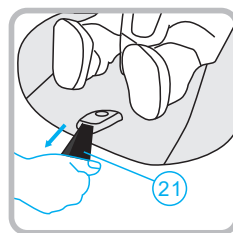
3. Pull the harness adjustment belt (21) until the 5-point harness is close to the child and not loose. (Figure 5.1.10) (Figure 5.1.11)



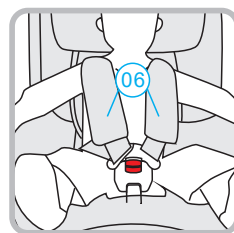
(Figure 5.1.9)

In order to ensure the safety of your child, please check the following items after each installation:

1. Make sure that the two ISOFIX connectors are correctly connected to the vehicle ISOFIX connection points, and the ISOFIX connection indicators are completely green.
2. Ensure that the child car seat is tightly attached to the vehicle seat.
3. Make sure that the top tether is tight and the top tether indicator is green.
4. Make sure that the 5-point seat harness is close to the child, but not squeezing the child.
5. Make sure that the shoulder straps are adjusted correctly and not twisted.
6. Make sure that the height of the shoulder pads is the same as the height of the child's shoulders.
7. Make sure that the 5-point buckle is locked.

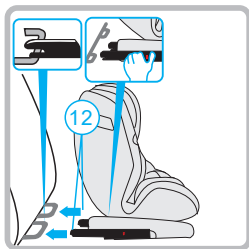


(Figure 5.1.10)



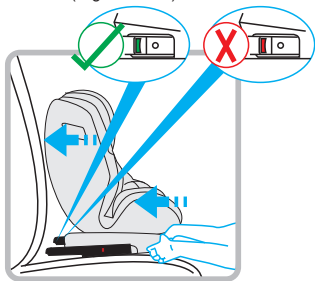
(Figure 5.1.11)

## 5.1-2 Group 1 (9-18kg) ISOFIX+ 3-point seat belt using 5-point harness



(Figure 5.3.1)

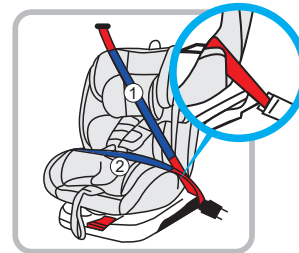
Please make sure that the 5-point harness is correctly installed on the child safety seat and not twisted.  
 Please refer to chapter 3.2 to adjust the 5-point harness.  
 Please refer to chapter 3.4 to adjust the recline position and ensure that it is locked in position.  
 Please refer to chapter 3.5 to rotate the car seat to a forward facing position.  
 Press the ISOFIX release button and extend the ISOFIX connectors out to their furthest point. Attach the ISOFIX connectors to the anchor points in the vehicle.  
 The safety indicator will turn green when they are securely locked. Push the child car seat back towards the vehicle seat as far as it will go. Using a knee may help with this.  
 Pull out the three-point safety belt of the vehicle to give yourself some slack.  
 Feed the diagonal part of the belt through the routing guide on the shoulder of child car seat. (Figure 5.1.3) Then continue to feed the diagonal part between the headrest and the shell.



(Figure 5.1.2)



(Figure 5.1.3)



(Figure 5.1.4)

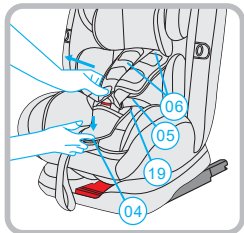


(Figure 5.1.5)

Feed the lap belt through the routing guides on the bottom of the seating area (Figure 5.1.2) and continue to feed both parts of the vehicle belt across the seat putting the belts behind the infant inserts and sleeping pads. (As per ① ② in Figure 5.1.4)

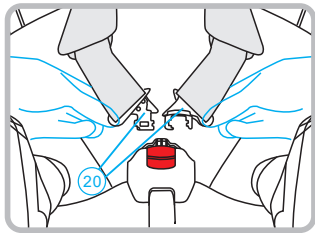
Feed both parts of the vehicle 3 point belt through the guide on the opposite side of the bottom of the seat (Figure 5.1.4) Then clip the 3 point belt into the vehicle buckle and pull to remove any slack in the belts. Remember to check to ensure the belts are not twisted.

- In order to ensure the safety of the child, please check the following items after each installation:
1. Make sure that the vehicle seat belt is not twisted and is tight.
  2. Make sure that the child safety seat is close to the vehicle seat.
  3. Make sure that the 5-point harness is close to the child, but not squeezing the child.
  4. Ensure that the shoulder strap is in the correct position and not twisted.
  5. Make sure that the height of the shoulder pad is the same as the height of the child's shoulders.
  6. Ensure that the 5-point buckle is locked.



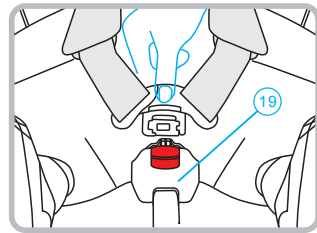
(Figure 5.1.6)

1. To use the 5-point harness, press the button to open the 5-point safety buckle (19), press the central adjuster (this is marked on the covers with a circle and PRESS) (04) and pull out the shoulder belts (05). Please do not pull the shoulder pads (06). (Figure 5.1.6)



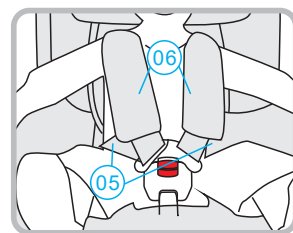
(Figure 5.1.7)

2. Make sure that the child's back rests flat on the car seat. Close the two clasps (20) of the 5-point safety buckle first, and then insert into the buckle. When it is locked, you will hear a "click". (Figure 5.1.7) (Figure 5.1.8)



(Figure 5.1.8)

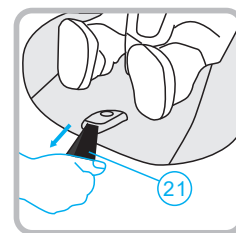
3. Pull the harness adjustment belt (21) until the 5-point harness is close to the child and not loose. (Figure 5.1.10) (Figure 5.1.11)



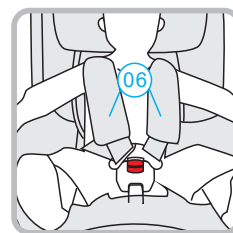
(Figure 5.1.9)

In order to ensure the safety of your child, please check the following items after each installation:

1. Make sure that the two ISOFIX connectors are correctly connected to the vehicle ISOFIX connection points, and the ISOFIX connection indicators are completely green.
2. Ensure that the child car seat is tightly attached to the vehicle seat.
3. Make sure that the 5-point harness is close to, but not squeezing the child.
4. Make sure that the shoulder straps are adjusted correctly and not twisted.
5. Make sure that the height of the shoulder pads is the same as the height of the child's shoulders.
6. Make sure that the 5-point buckle is locked.



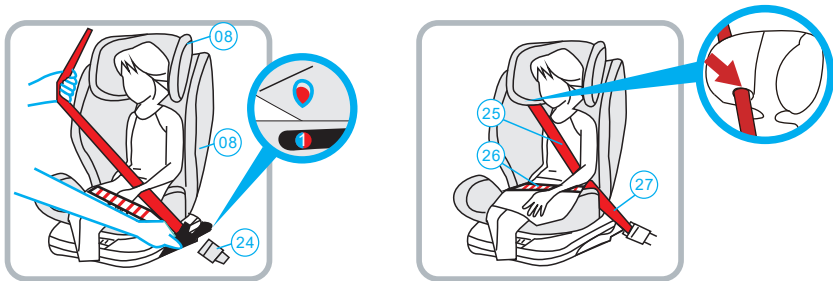
(Figure 5.1.10)



(Figure 5.1.11)



## 5.2-1 Group 2/3 (15-36kg) 3-point seat belt



(Figure 5.2.1)

(Figure 5.2.2)

Please ensure that the 5-point harness is properly hidden.

Ensure the headrest is in the correct position for your child (see chapter 3).

Ensure the seat is locked in a forward facing position and is locked into recline position 1.

You are unable to use any other recline position other than position 1 in this weight group.

Place the child safety seat on the vehicle seat in the same direction as travel (forward facing)

Pull out the vehicle 3-point belt around the child, and buckle it up. You will hear a “click” (24), when it is locked.

Warning : Ensure that the vehicle 3-point belt is not twisted

Place the lap part of the vehicle belt (26) and diagonal part of the belt (25) (on the same side of the vehicle 3-point belt buckle) (24)-under the child's arm and place both parts in the belt guide groove (27) (Figure 5.2.2)



(Figure 5.2.3)

(Figure 5.2.4)

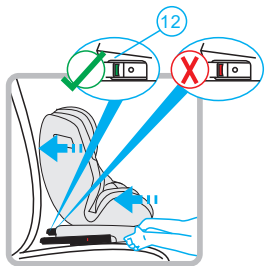
Place the other side of the lap part of the vehicle belt (26) in the belt guide groove (28) on the other side of the child car seat. (Figure 5.2.3)

Feed the diagonal part of the vehicle seat belt (29) into the belt guide of the headrest (30) and ensure that the vehicle seat belt is not twisted. (Figure 5.2.4) Please make sure that the diagonal part of the seat belt (29) sits on the child's collarbone, not on the child's neck. Tip: If necessary, you can adjust the headrest.

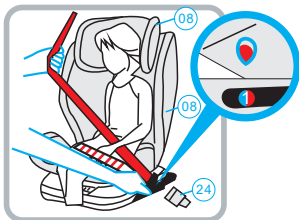
In order to ensure the safety of your child, please pay attention to the following items after each installation:

1. Make sure that both the diagonal part of the belt (25) and lap part of the belt (26) on the side of the car seat belt buckle (24) are placed in the belt guide groove (27).
2. Make sure that the other side of the lap part of the belt (26) is placed in the belt guide groove (28) (Figure 5.2.3).
3. Ensure that the diagonal part of the belt (29) is placed in the belt guide (30) on the headrest (08).
4. Ensure that the diagonal part of the belt (29) is placed on the child's collarbone, not on the child's neck.
5. Ensure that the vehicle seat belt is not twisted and is tight to the child's body.

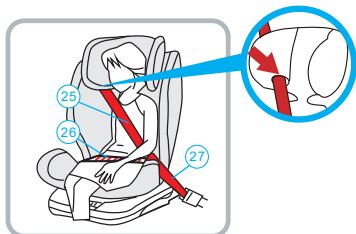
## 5.2-2 Group 2/3 (15-36kg) 3-point seat belt + ISOFIX



(Figure 5.2.1)



(Figure 5.2.2)



(Figure 5.2.3)

Please ensure that the 5-point harness is properly hidden.

Ensure the headrest is in the correct position for your child (see chapter 3).

Ensure the seat is locked in a forward facing position and is locked into recline position 1.

You are unable to use any other recline position other than position 1 in this weight group.

Place the child safety seat on the vehicle seat in the same direction as travel (forward facing)

1. Please connect the two ISOFIX connectors. Insert the ISOFIX connectors into the ISOFIX guides and on to the ISOFIX connection points until you hear a "click" sound, the ISOFIX indicator will turn green.

Push the car seat firmly towards the back of the vehicle seat until it won't go any further. (Figure 5.2.1)

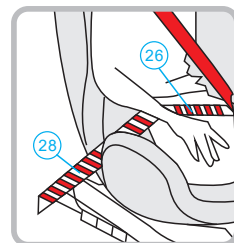
Pushing one side at a time or using your knee might help.

Pull out the vehicle 3-point belt around the child, and buckle it up. You will hear a "click" (24), when it is locked.

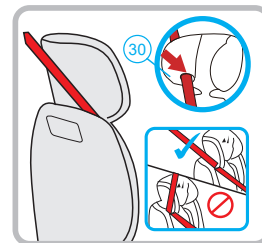
Warning : Ensure that the vehicle 3-point belt is not twisted.

Place the lap part of the vehicle belt (26) and diagonal part of the belt (25)

(24)-under the child's arm and place both parts in the belt guide groove (27) (Figure 5.2.3)



(Figure 5.2.4)



(Figure 5.2.5)

Place the other side of lap part of the belt (26) in the belt guide groove (28) on the other side of the child car seat. (Figure 5.2.4)

Feed the diagonal part of the vehicle seat belt (29) into the belt guide of the headrest (30) and ensure that the vehicle seat belt is not twisted. (Figure 5.2.4) Please make sure that the diagonal part of the seat belt (29) sits on the child's collarbone, not on the child's neck.

Tip: If necessary, you can adjust the headrest.

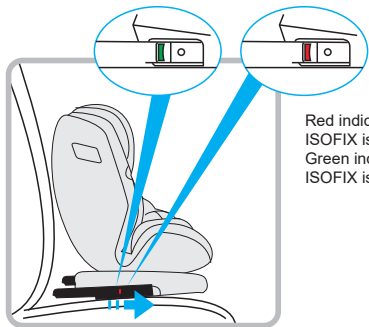
In order to ensure the safety of your child, please pay attention to the following items after each installation:

1. Make sure that both the diagonal part of the belt (25) and lap part of the belt (26) on the side of the car seat belt buckle (24) are placed in the belt guide groove (27).
2. Make sure that the other side of the lap part of the belt (26) is placed in the belt guide groove (28) (Figure 5.2.3).
3. Ensure that the diagonal part of the belt (29) is placed in the belt guide (30) on the headrest (08).
4. Ensure that the diagonal part of the belt (29) is placed on the child's collarbone, not on the child's neck.
5. Ensure that the vehicle seat belt is not twisted and is tight to the child's body.

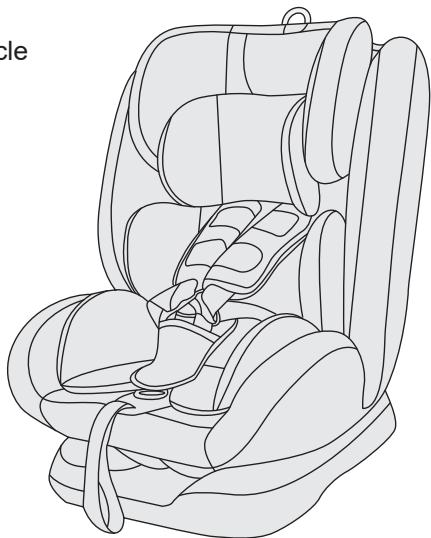
# 6

## Removing The Car Seat From Your Vehicle

Press the ISOFIX release button to unlock the ISOFIX. When the safety indicator turns from green to red, it means that the ISOFIX is disconnected from the vehicle. Continue to slide the connectors into the base. Remove all of the vehicle belts and then the seat can be removed from the vehicle.



Red indicator means  
ISOFIX is unlocked  
Green indicator means  
ISOFIX is locked



# 7

## Cleaning The Covers



The cloth cover of the child safety seat can be removed and washed. Disassembly of the cloth cover:

1. Adjust the headrest to the highest position.
2. Remove the headrest cover by removing any toggles and poppers and stretching the elastic parts of the cover over the headrest.
3. Remove the chair body cover by removing any toggles and poppers and stretching the elastic parts of the cover over the seat.

Hand wash with water temperature not exceeding 30°C.  
Use neutral detergent. Only hand wash, do not bleach,  
dry flat, do not tumble dry, do not iron, do not dry clean,  
do not use bleach or furniture detergent

